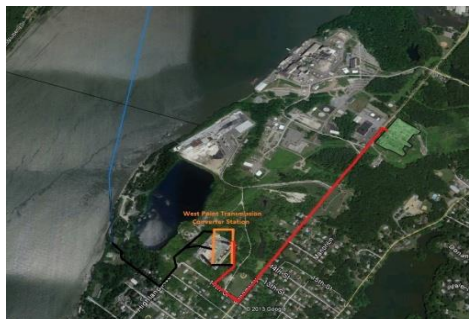


Two **New** Energy Projects in Verplanck?

VERPLANCK HAS BEEN CHOSEN as the proposed site for two new and different energy projects. The Town of Cortlandt has voiced concerns about many adverse impacts these projects will have on our community, and has filed to represent the town residents interests and rights. Nearby Village, Town, and County offices, as well as several health and environmental groups, are also advocating on behalf of residents of our communities. A task force of local residents has been formed by the Town to learn more about, and work toward protecting the residents of Verplanck and nearby communities from the adverse impact of either or both of the proposals outlined below.

West Point Partners, LLC proposal: One-Thousand Megawatt Power cable



buried under 9th & Highland Streets connecting to a huge new Electrical Converter Station in close proximity to Letteri Field, and then out 11th Street to Broadway to the Buchanan North Sub-Station. The Public Service Commission has oversight over this proposed 80-mile power cable proposed to begin at a new converter station in Athens, NY and then under the Hudson River where it is proposed to emerge at 9th Street in Verplanck. A permanent above-ground component includes a five-story football field sized converter building which will require approximately 5 acres of land plus 80-foot tall lightning rods.

INITIAL QUESTIONS AND CONCERNS:

- ❖ **Why is WPP planning to locate this industrial facility in a residential neighborhood?** West Point told the State of New York on 5/30/12 that they would not route cables through neighborhoods or densely populated areas. They did not review anywhere **except** populated areas!
- ❖ What are the **health and safety** issues associated with Electric Magnetic Fields (EMF) levels this project will create? **1,000 megawatts** of power are planned to run through and under the streets of Verplanck, where we walk and our children play. 1,000 megawatts is **equivalent to the power of Indian Point 2**.
- ❖ Home properties will be devalued – *how much?* How hard will it be to sell your home?
- ❖ West Point Partners' reports state that residents can expect a *noticeable increase in "acceptable" noise levels round the clock, seven days a week.* **How is this "acceptable"?**
- ❖ Why were **no alternate locations** considered for this facility, when **9 locations** were considered for the upstate starting point?
- ❖ Where else in the country is one of these facilities **adjacent to an established residential district?** Within 1000 feet? Within 500 feet?
- ❖ Clearing of 5+ acres of woodlands will result in **elimination of sound and visual buffers** between LaFarge & Entergy and the residential neighborhoods of Verplanck.
- ❖ 30-month construction period- heavy equipment - **blasting – dust – noise-** will impact our entire community.
- ❖ **Why is this additional power line necessary at all?** There are competing projects that do not require new rights of way and do not run through Verplanck -- alternate projects already planned.
- ❖ **Will this facilitate the shutdown of Indian Point?**

What you can do: learn more about this electrical project: View the application to the NYS PSC along with associated submissions at the NYS Public Service Commission Website at <http://documents.dps.ny.gov> - enter **Case No. 13-T-0292** or view at the **Hen Hud Free Library**. **Register with the PSC to submit your questions and/or concerns.**

Turn over to learn about the 2nd project!

Algonquin Gas/SPECTRA ENERGY proposal:



A new 42” high-pressure Natural Gas Line (green) from Rockland County making landfall in Verplanck at 9th Street, around the quarry, then adjacent to St. Patrick’s Church, crossing under Broadway, replacing the current 26” Algonquin Gas line in Buchanan. The pipeline, the “AIM project”, will run adjacent to homes in Verplanck, the Towns of Cortlandt, Yorktown, Somers, and City of Peekskill.

INITIAL QUESTIONS & CONCERNS:

- ❖ Why is Algonquin/Spectra planning a **new route** for this high-pressure gas pipeline **so near a residential neighborhood**, instead of using the existing route or alternative sites?
- ❖ Most of the construction for the AIM Project will occur in New York, but **the project will not deliver natural gas to any New York end users**. Their documentation states it is not needed for any additional local, NYS demand.
- ❖ Absolutely no indicated benefit to the residents of Verplanck, Cortlandt, Westchester County or the State of New York. The purpose of this **privately owned pipeline** is to transport gas from out-of-state, through our community, to the company’s “premium markets” in Connecticut, Massachusetts and beyond.
- ❖ What will be the **impact of heavy construction** so near to our homes, water and septic systems?
- ❖ **Home properties will be devalued – how much?**
- ❖ **Health issues:** This project is stated to deliver additional Appalachian & Marcellus Shale Gas – with their hydraulic fracturing byproducts, including wastewater, which can contain **hazardous and radioactive materials**. There is concern about **increased levels of radon** in our ground water caused by leaks along the pipeline and at the above-ground facilities. **Release of natural gas** will occur on a “planned basis for maintenance”. What will be the effect of these “planned releases” on greenhouse gases and our environment?
- ❖ Is the new pipeline to include capacity for future incremental projects or for future, different uses?
- ❖ **Could this project be intended to replace energy from Indian Point and/or for further export?**
- ❖ **Why should Verplanck and our neighbors bear the brunt of the risks and exposures for the benefit of a private entity and unknown end users?**

What you can do: Learn more about this gas line project on the Federal Energy Regulatory (FERC) Website at www.ferc.gov - Docket No. PF13-16-000. **Register to submit your questions and/or concerns.**

Contact our New York State Representatives to express your concerns regarding both projects:

- **Governor Mario Cuomo:** www.governor.ny.gov or call **518-474-8390**; fax 518-4741513
- **Senator Charles Schumer:** www.schumer.senate.gov/Contact/contact_chuck.cfm or call **202-224-6542**; fax 202-228-3027
- **Congresswoman Nita M. Lowey:** www.lowey.house.gov or call **202-225-6506**; fax 202-225-0546
- **New York State Senator Greg Ball:** [www.gball@nysenate.gov](mailto:gball@nysenate.gov) or call **845-279-3773**
- **New York State Assemblywoman Sandy Galef:** galefs@assembly.state.ny.us or call **914-941-1111**

Turn over to learn about the 2nd project!