

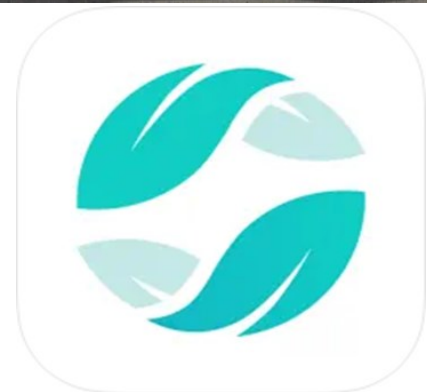
# Town of Cortlandt

## 2025 Sanitation/Recycling Guide

[www.townofcortlandt.com](http://www.townofcortlandt.com)



Sanitation App  
**RECYCLE COACH**  
is available on our website  
or download the App on  
Google Play/Apple App  
Store



**RECYCLE COACH**

SUPERVISOR

**RICHARD H. BECKER, MD**

TOWN BOARD MEMBERS

**JAMES F. CREIGHTON**

**CRISTIN JACOBY**

**ROBERT E. MAYES**

**JOYCE C. WHITE**



Department of Environmental Services

167 Roa Hook Road

(914) 737-0100

Email: [Sanitation@townofcortlandt.com](mailto:Sanitation@townofcortlandt.com)

Stephen J. Ferreira, P.E., Director

Christina Edwards, Deputy Director - DES/Admin.

# Keeping Our Citizens Informed.



**CODERED MOBILE ALERT**



## SOCIAL MEDIA & WEEKLY E-NEWSLETTER

Sign up for our weekly “Newsletter”, emailed every Friday at 4PM. Over 12,000 residents receive and enjoy this each week; it lists all the events occurring in and near our town. It is an easy way to find out what’s happening in Cortlandt. To sign up, please visit [www.townofcortlandt.com/alerts](http://www.townofcortlandt.com/alerts)

 [www.townofcortlandt.com](http://www.townofcortlandt.com)

 Town of Cortlandt Government 

 Town of Cortlandt 

## REGISTER FOR CODERED ALERTS!

Sign up for the CodeRED notification system to receive alerts and updates during emergency events.

*All residents and businesses are encouraged to register.*

### REGISTER ONLINE:

[www.townofcortlandt.com/alerts](http://www.townofcortlandt.com/alerts)

### REGISTER ON YOUR SMARTPHONE:

Text **CORTLANDT** to **99411** or download the CodeRED Mobile Alert safety app. Available on the App Store or Google Play.

### FOR RESIDENTS WITHOUT INTERNET ACCESS:

Contact Town Supervisor Dr. Richard Becker’s Office at (914) 734-1002.

### USE CASES:

Winter Storm Updates, Street Closures, Water Main Breaks, etc



Scan QR Code with your smartphone to enroll in CodeRED

# GENERAL INFORMATION

**DEPARTMENT OF ENVIRONMENTAL SERVICES - SANITATION DIVISION (914) 737-0100 or [www.townofcortlandt.com/sanitation](http://www.townofcortlandt.com/sanitation)**

The Department of Environmental Services provides curbside collection of trash, recycling (paper, plastic, glass, metal), special pick up (tires, Freon, and special bulk), bulk collection, e-waste drop off and organic waste. The Town is divided into various zones and routes to more efficiently service the residents.

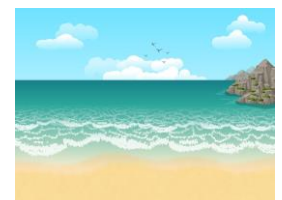
## **Solid Waste Collection (Household Garbage)**

- Garbage collection in the Town is divided into two routes. The northern end of Town and Verplanck are generally picked up on Monday and the southern end of Town is serviced on Tuesday. An alphabetical list is included in this brochure indicating a Monday or Tuesday garbage route. Paper is picked up town wide on Wednesday and Commingle is picked up town wide on Thursday.
- Garbage and recycling containers must not exceed 45 gallons or a total weight of 70 pounds. **Oversized cans will not be picked up.** (See regulations on page 12)
- The garbage containers must have a secure cover with 2 substantial handles. Bungee cords pose a hazard to Town workers and are not permitted.
- Secure garbage bags (that do not break when picked up) can be placed curbside. The Town is not responsible for breakage or loss of garbage cans.
- Garbage must be curbside before 7:00 a.m. (6:00 a.m. from May 27<sup>th</sup> to August 29<sup>th</sup>) the day of pick up or can be put out the night before.
- When a holiday falls in a week, all services will be moved forward one day.
- During snow events, garbage collection may be canceled. When that occurs, the schedule will shift. Always check our website for updates.

**2025 holidays are as follows: New Years Day, Martin Luther King Jr. Day, President’s Day, Good Friday, Memorial Day, Juneteenth, Independence Day, Labor Day, Columbus Day, Election Day, Veteran’s Day, Thanksgiving, and Christmas.**



**The Sanitation Division works summer hours from May 27<sup>th</sup> to August 29<sup>th</sup>. Please have all items curbside by 6:00 a.m.**



### **Table of Contents**

Paper, Commingle & Organic Recycling	2	Westchester County Recycling	4
Brush Pick Up	3	Highway & Water Divisions	5
Electronic Waste	3	Stormwater	6
Bulk Trash	3	Alphabetical Street Listing	7
Special Pick Ups	4	Calendar	Back Cover

# PAPER, COMMINGLE & ORGANIC RECYCLING

## TOWN OF CORTLANDT CURBSIDE RECYCLING PROGRAM

Westchester County asks all residents to comply with its Source Separation Law and recycle  
<http://environment.westchestergov.com/laws/source-separation-law>

### PAPER RECYCLING

Curbside paper recycling takes place town wide on Wednesday (except when there is a holiday on Monday or Tuesday, see calendar for details). Please place items in a recycling container or in a paper bag or cardboard box. **Any paper placed in a plastic bag will not be picked up.** The following items must be recycled:

- Newspaper and glossy inserts
- Magazines
- Junk mail
- Telephone books
- Office paper
- Corrugated cardboard
- Grey cardboard (i.e. tissue box)
- Shredded paper
- Gift wrap paper

We **DO NOT** recycle paperback or hard-cover books, waxed paper, paper stained by food (i.e. pizza boxes), plastic and Styrofoam packing material. These items should be placed in the garbage.

### COMMINGLED RECYCLING

Commingled is picked up town wide on Thursdays (except when there is a holiday then it will be picked up on Friday, see schedule for details). **Any commingled items in a plastic bag will not be picked up.** The following items must be recycled:

#### Metal

- Food and beverage cans (rinse cans but you do not have to remove labels)
- Empty aerosol cans (empty through normal use)

#### Plastic

**Containers marked 1 through 7 on the bottom**

- Milk, juice and water bottles
- Shampoo and detergent containers
- Soda bottles (discard cap in the trash)
- Gable-top refrigerated cartons (milk, juice, soup)
- Ice cream cartons

#### Glass

- Clear, green or brown glass jars of any size

**Do Not** Recycle the Following

#### Metal

- Empty motor oil cans
- Kitchen utensils/cookware
- Paint can (empty/dried out cans can be placed with regular garbage)
- Hangers
- Scrap Metal
- Any container that held hazardous material

#### Plastic

- 5 gallon plastic pails
- Flower pots
- Plastic shopping bags
- Toys
- Packing material

#### Glass

- Light bulbs
- Drinking glasses
- Mirrors or windows



### ORGANIC RECYCLING

#### Organic Yard Waste

The Town has established regular pick up routes for organic yard waste. Please see the schedule for details. Yard waste will be picked up town wide on these dates. Yard waste must be placed in **brown biodegradable bags** or loosely in garbage cans. **Plastic bags cannot be composted. Organic waste in plastic bags WILL NOT be picked up.** If no organic pick up is imminent please call **914-737-0100** to be added to the waiting list. The County is encouraging residents to participate in the Love 'Em and Leave 'Em mulching in place initiative. Please visit <http://www.leleny.org/> for more information.

#### Christmas Trees

Christmas trees will be collected **Friday January 17<sup>th</sup>**. Place your tree curbside free of all trimmings, lights, nails, etc. **Trees placed in plastic bags WILL NOT be picked up.** To schedule a tree pick-up on another day please call 914-737-0100.



## ORGANIC (CONT), E-WASTE & BULK TRASH

### Brush Pick Up

Call the Sanitation Division at (914) 737-0100 to schedule a brush pick up.

*Requirements include the following:* Only branches 6 inches in diameter or less can be chipped. Brush must not exceed 10 feet long. Branches should be stacked neatly roadside with butt ends facing roadway. Do not tie or bundle the branches. **We do not chip logs, stumps, lumber, railroad ties, building materials, dead wood, vines, bamboo or brush with root balls attached. Brush service is not available for whole tree takedowns or wooded lot clean up. We reserve the right to refuse pick up if guidelines are not followed. Any brush smaller than 4 feet long should be bundled and tied and placed out for organic yard waste pick on the scheduled day.**

**No commercial debris removal. When hiring a contractor for yard work they are responsible for removing all debris (per Town Code).**

**\*THE TOWN DOES NOT SCHEDULE BRUSH PICK UPS IN JANUARY OR FEBRUARY\***

### Composting

Yard waste such as fallen leaves, grass clippings, weeds and remains of garden plants along with organic kitchen waste make excellent composting materials. For more information on composting visit the Westchester County website at <http://cwmi.css.cornell.edu/composting.htm#smallcomposting>

#### 2025 Organic Yard Waste Schedule

Yard waste placed in biodegradable bags and placed curbside will be picked up Town wide on the following days

<i>March 7</i>	<i>August 8</i>
<i>April 11</i>	<i>September 19</i>
<i>May 16</i>	<i>October 31</i>
<i>June 27</i>	<i>November 21</i>

If no organic pick up is imminent please call **914-737-0100** to be added to the waiting list.

### E-WASTE

#### Best Buy Electronics Recycling Program

Best Buy will recycle any electronics regardless of where the item was purchased. Some fees may apply.

<http://www.bestbuy.com/site/Global-Promotions/Recycling-Electronics/pcmcat149900050025.c?id=pcmcat14990050025&pageType=REDIRECT&issolr=1&searchRedirect=recycle>

## E-WASTE

E-Waste is electronic waste. Certain components of some electronic products contain materials that render them hazardous. Some examples of E-Waste products include; computers, chargers, printers, shredders, fax machine, copiers, CD/DVD players, phones, answering machines, video game systems, cable wires, TVs, cell phones, radios, speakers, digital cameras, GPS units.

There are 4 ways to dispose of E-Waste

- Drop these items off at Buchanan DPW garage at 218 Westchester Avenue Mon – Fri 7am – 3pm. Canister is by the baseball field in the back of the property.
- Best Buy Electronics Recycling Program (see link)
- Arrange for a special pickup (Fee required)
- Contact the Westchester County HMRF to schedule an appointment at (914) 813-5425 for further details.

Many electronic items contain personal sensitive material. Please remember to remove all personal information from items before recycling.

***\*Televisions and E-Waste items must be dropped off at 218 Westchester Avenue or must be paid for as a Special pick up. They WILL NOT be picked up on Bulk days.***

### Batteries

Please visit the following link for information on battery recycling

<http://environment.westchestergov.com/residents/recycling-guidelines/household-batteries>

## BULK TRASH COLLECTION

Bulk pick up is scheduled by 3 routes in the Town and picked up on Fridays. All routes are listed in the back of this brochure or you can visit our website at [www.townofcortlandt.com/sanitation](http://www.townofcortlandt.com/sanitation) or call the office at (914) 737-0100. Items for bulk collection must be placed curbside no later than 7:00 a.m. the morning of pick up (6:00 a.m. summer hours). Items can't be placed out more than 2 days before pick up.

**NEW REGULATION – All mattresses and box springs out for disposal MUST be placed in sealed plastic bags. Bags can be purchased at your local hardware store or online.**



## **BULK (CONT), SPECIAL SERVICES & WESTCHESTER COUNTY RECYCLING**

Items that can be placed out for bulk pick up *include*: furniture, carpeting and padding (cut in 3 x 9 length or smaller and taped), trash cans clearly marked as trash, dishwashers, dryers, washing machines, stoves, file cabinets, desks, water heaters, aluminum siding, bicycles, metal fencing (no cement bottoms), plumbing pipe (4 feet lengths), snow blowers, lawnmowers (no gas or oil), swing sets (dismantled with no cement bottoms), Heating units must be free of oil (certified cleaning required), space heaters (free of kerosene) and propane tanks (must be completely empty with entire center valve removed). For pull out couches the frame must be removed before placing curbside. Please separate all metal items for pick up.

**Items not picked up include** railroad ties, pianos, logs, concrete, hazardous materials and C&D.

**General Rule of Thumb: pile should be able to fit in the back of a pick up truck. Larger piles may be subject to additional fees.**

### **Illegal Dumping is Punishable by a Mandatory Fine - Minimum Fine \$250.00**

Please call Code Enforcement at (914) 734-0100 to report any illegal dumping

### **CONSTRUCTION DEBRIS WILL NOT BE ACCEPTED**

#### **2025 Bulk Schedule is as follows:**

##### **Route 1 Pick Up Fridays**

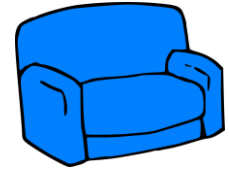
- *January 10*
- *February 14*
- *March 21*
- *April 25*
- *May 23*
- *July 11*
- *August 1*
- *August 29*
- *October 3*
- *December 5*

##### **Route 2 Pick Up Fridays**

- *January 31*
- *February 28*
- *March 28*
- *May 2*
- *June 6*
- *July 18*
- *August 15*
- *September 12*
- *October 10*
- *December 12*

##### **Route 3 Pick Up Fridays**

- *February 7*
- *March 14*
- *April 4*
- *May 9*
- *June 13*
- *July 25*
- *August 22*
- *September 26*
- *October 24*
- *December 19*



### **SPECIAL SERVICES (FEE REQUIRED)**

**Special Bulk Pick-ups** – Items containing Freon, tires, and electronics can be picked up for a fee through the Sanitation Division. Please mail payment to Town of Cortlandt - Sanitation Division, 167 Roa Hook Rd, Cortlandt Manor, NY 10567 and include your phone number or stop by our office. A pick up date will be provided along with instructions and a special sticker if required. The Town does not take credit card payments.

**Special bulk pick-ups** – Cost \$30.00 and follow the same guidelines as our regular bulk pick up

**Freon** – Any items containing Freon such as refrigerators, freezers, air conditioners and dehumidifiers require a special pick up. The cost is \$10.00 and a special sticker is required. Reminder all doors must be removed as required by law.

**Tires** – The Town will recycle tires up to 16” rims. Limit 8 tires per household per year. The cost is \$5.00 without rims and \$10.00 with rims. Special stickers are required for pick up.

**E-Waste** – A \$10.00 fee is required for each television. All other e-waste items require a \$5.00 fee per item.

### **2024 WESTCHESTER COUNTY RECYCLING**

The Town never picks up hazardous waste. Westchester County has a drop off location in Valhalla. You must call (914) 813-5425 to make an appointment or go online to

<https://environment.westchestergov.com/recycling> for more details.

Other important links

#### **Motor Oil**

<http://environment.westchestergov.com/residents/recycling-guidelines/automotive/motoroil-filters-batts-licenseplates>

#### **Other Special Waste**

<http://environment.westchestergov.com/special-waste>

#### **Light Bulbs**

<http://environment.westchestergov.com/residents/recycling-guidelines/compact-fluorescent-lights>

# Highway & Water Divisions



## HIGHWAY DIVISION

140 8<sup>th</sup> Street, Verplanck, NY 10596  
(914) 737-0047

Services provided by the Department include the following:

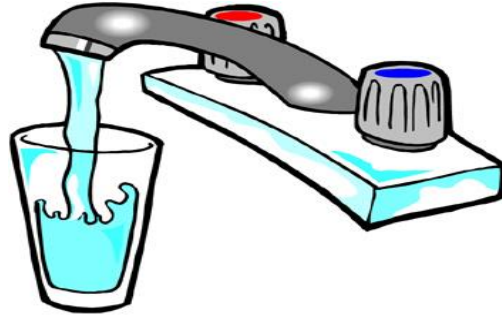
- Snow plowing and salting
- Sidewalk Maintenance
- Town Drainage systems - please do not dump yard waste (including grass clippings and branches) near any drainage ditch or piping.
- Asphalt patching and repair (to report a pothole please call the Highway Department.)
- Street light/Traffic signal repair (When calling to report a street light please try to obtain a pole #.)
- Guiderail installation/repair
- Sign maintenance
- Roadside tree removal (Tree removal from private property is not included in this service.)
- Dead animal removal (We do not remove animals from private property. On weekends please contact the Police.)
- Call the Sanitation Division to schedule a brush pick up (914) 737-0100.
- Any work performed in the Town Right of Way requires a permit. Please contact (914) 737-0100 for more information on a Road/Utility Permit.
- Construction and Tree Planting is NOT PERMITTED in a Town Right-of-Way.

### REMINDER

Town Ordinance requires that no vehicle be placed on any Town streets, highway or roads between the hours of Midnight and 7:00 a.m. any day during the period of November 15<sup>th</sup> through April 15<sup>th</sup>. In addition, parked vehicles will be ticketed and/or towed during all snow removal operations regardless of the hours.

Please be patient during snow removal operations and do not shovel or plow snow into roadways as it creates a hazardous condition and violates NYS Highway Law.

## WATER DIVISION



The Town of Cortlandt Water Department has relocated to 137 7<sup>th</sup> Street Verplanck, NY 10596

For Billing Questions Please Call Northern  
Westchester Joint Water Works  
(914) 737-7676

For Maintenance Issues Please Call  
(914) 734-1026

**After Hours Water Emergency ONLY Call  
1-845-278-5016 (water answering service)**

As previously communicated, all customers who receive water from the Cortlandt Consolidated Water District are required to have their water service lines tested for lead. This testing is essential for the safety of you and your family, and mandated by the EPA.

Additionally, all customers must have their water meter registers replaced. Please note that if you choose not to have your service line tested and the register upgraded, a manual water reading surcharge of \$200 will be applied to each water account and will not be reversed. Please fill out survey

[www.townofcortlandt.com/serviceline](http://www.townofcortlandt.com/serviceline) or scan our

QR Code below:



The Water Division maintains over 1,500 hydrants throughout the Town. During snow storms please clear any hydrants near your property when possible.

## **Stormwater**

### **Solutions to the Pollution**

#### **Easy things you can do every day to protection our water**

**Stormwater** is water from rain or melting snow that flows from rooftops, paved areas and lawns that doesn't soak into the ground but runs off into waterways.

As it flows, stormwater runoff collects and transports soil, animal waste, salt, fertilizers, oil and grease, pesticides, litter and other potential pollutants. This pollution can enter groundwater, streams, lakes, ponds and river and can even affect the quality of our drinking water.

Increases in impervious surfaces cause more stormwater runoff. Because less water is soaking in, flooding can become more frequent and more destructive.

The Town of Cortlandt is a regulated Storm system community and has enacted updated Town ordinances governing stormwater.

#### **Lawn Care**

Most lawns tested in Westchester County did NOT need more phosphorus. If you must fertilize, use phosphorus-free fertilizer (where the middle number on the bag is zero). Excess fertilizer flows into streams, lakes, rivers and reservoirs, where it can degrade drinking water, lead to algae and plant growth and contribute to fish kills. Don't fertilize when rain is expected. Leave grass clippings on the laws to recycle nutrients. More information on lawn care is available in the Town of Cortlandt Sanitation Website.

#### **Septic System Maintenance**

Failing septic systems can contaminate groundwater, drinking water and surface flows. Most of the Town of Cortlandt is serviced by individual septic systems. These septic systems should be pumped and inspected regularly. Do not pour chemicals, paints, fats, or excess medications down your pipes. Driving on or parking on septic fields may damage them.

#### **Scoop the Poop**

Please pick up after your dog or cat. It doesn't matter the size of the animal – all animal waste has an impact. Animal waste is easily carried by runoff, washing off roads and lawns. Pet waste contains harmful bacteria and phosphorus that can promote the growth of weeds, and algae. Scoop the poop and dispose of pet waste in the garbage.

#### **Only Rain down the Drain**

All our storm drains lead eventually to someone's drinking water. Don't dispose of waste down the drain or into any of the ditches, swales, street drains or stormwater outfalls that convey stormwater.

#### **Landscaping Helps**

Keep vegetation and organic material on the soil, especially on slopes. Landscape to limit the steepness or length of slopes. Build a buffer of vegetation by watercourses to help filter sediment. Replace the lawn at water's edge with shrubs, hedges or trees. Anything that slows the flow of water will help give time for the pollution to be removed.

#### **Care for your Car**

Little drops of oil and gas add up. One pint of oil can cause an oil slick the size of a football field. Take used motor oil to gas stations. NEVER pour it down the drain. Take other fluids to approved recycling locations. More information about this is in the Town of Cortlandt Sanitation Website. Use saw dust or kitty litter to clean up leaks and spills in your driveway. Wash your car on your lawn if possible to capture runoff.

#### **Reporting Stormwater Polluters**

Your actions or the action of your neighbor can affect water resources. We are all downstream of someone. No polluted water should be allowed to go into our stormwater system. If you notice pollution of Stormwater you can report the details to the Town of Cortlandt Stormwater Hotline at (914) 734-1060.

**Cortlandt's Stormwater Hotline (914) 734-1060**



Garbage Bulk			Garbage Bulk			Garbage Bulk			Garbage Bulk			Garbage Bulk			Garbage Bulk		
Street	Route	Route	Street	Route	Route	Street	Route	Route	Street	Route	Route	Street	Route	Route	Street	Route	Route
<b>- A -</b>			ARMSTRONG ST	M	1	BROOK LN (FURNACE DOCK RD)	T	2	COLLEGE HILL RD	T	3	DARES LANE	M	2	EMERSON PL	T	3
ABERDEEN RD	M	1	ARTHUR ST	M	1	BROOK ST	M	1	CONCORD DR	M	1	DARNAY CT	T	2	EMERY HILL RD	T	2
ABRAHAM GUNN MEM ADAIR RD	M	1	ASH ST ( CROTON PARK RD)	T	2	BROOKSIDE (OFF BMP)	M	2	CONKLIN AVE	M	2	DECATUR RD	M	2	ENRICO DR	M	1
<b>- B -</b>			BAINBRIDGE RD	M	1	BUENA VISTA	M	1	CORDWOOD RD	T	2	DEER TRACK LN	T	2	ERNST RD	M	1
ADAMS RUSH RD	M	1	BAKER ST	M	1	BUTTONWOOD AVE	T	2	CORNELL AVE	M	1	DEERFIELD LN	T	2	ETON DOWNS	M	1
ADELE CT	T	3	BAL TIC PL	T	3	BUTTONWOOD RD	T	2	CORTLANDT AVE	M	1	DEERHAUNT DR	T	3	ETON LN	M	1
ADRIAN CT	M	2	BARGER ST	M	1	<b>- C -</b>			CORTLANDT ST	T	3	DEVONSHIRE CT	T	3	EVERGREEN RD	T	2
AIDA LN	T	2	BARON DeHIRSCH	M	2	CARDINAL RD	T	2	COVENTRY CT	T	3	DIANE CT	T	2	<b>- F -</b>		
ALAN DR	T	3	BATTEN RD (RT 129 OF ANNSVILLE)	T	3	CARDOZA AVE	M	1	COVERT ST	T	3	DICKERSON RD	T	2	FAIRGREEN CT	T	2
ALBANY POST RD (N OF ANNSVILLE)	M	1	BATTERY PL	T	3	CARLY CT	M	1	CRANBERRY CT	T	2	DIMOND AVE	T	2	FAIRVIEW PL	M	1
ALBANY POST RD (SOUTH - CROTON LINE TO BUCH)	T	3	BAY VIEW RD	M	1	CAROL CT	T	3	CRESCENT DR	M	2	DIRUBBO DR	M	2	FAITH WALK	T	2
ALDAR CT	M	1	BEAR MT. LANE	M	2	CAROLYN DR	M	1	CRESCENT HILL DR	M	1	DIXON RD	T	2	FAWN RIDGE DR	M	1
ALLAN ST	M	1	BEECHLAND CT	T	3	CARPENTER AVE	M	1	CRESTVIEW AVE	T	2	DOGWOOD RD	M	1	FERMI CT	M	1
ALPINE DR	M	1	BENJAMIN LANE	T	2	CASPARIAN RD	M	1	CRIGLER AVE	M	2	DONNELLY PL	M	1	FIELD PL	M	1
AMALFI DR	T	2	BETHEA DR	T	3	CATHERINE ST	M	1	CROMPOND RD (Even #'s)	M	2	DORIS LEE DR	M	1	FIELDSTONE LN	T	2
AMANDA CT	T	2	BEVERLY RD	M	1	CATSKILL PL	M	1	CROMPOND RD (Odd #'s)	T	2	DOUGLAS MOWBRAY RD DOVE CT	T	3	FLANDERS LN	T	2
AMATO DR (E&W)	M	1	BIRCH BROOK RD	M	1	CAUSEWAY (E & W)	M	1	CROSBY CT	T	2	DREAM LAKE RD	T	3	FLORAL RD	M	1
AMBERLANDS	T	3	BIRCH LANE	M	1	CEDAR KNOLL LN	T	2	CROSS LN	T	2	DURRIN AVE	M	1	FORDAL PL (LAKE PEEKSKILL) FOREST AVE	M	1
ANDOVER CT	T	2	BIRCH LN (Pine Hill)	T	3	CEDAR RD	M	1	CROSS RD	T	2	DUTCH ST	T	3	FOREST CT	T	3
ANDRE LN	M	1	BIRCH ST	T	2	CHARDONNAY	T	2	CROTON AVE	T	2	DYCKMAN DR	M	2	FOREST LN	M	2
ANGELA DR	T	3	BIRCH WAY	T	2	CHARLES W. BRIGGS RD	T	3	CROTON DAM RD	T	3	<b>- E -</b>			FOREST LN	M	2
ANITA CT	T	2	BIRCHWOOD LN	T	2	CHELSEA PL	T	2	CROTON LAKE RD	T	3	EAST FRANCES DR	T	3	FOSTER CT	T	3
ANN ST	M	1	BITTER SWEET	T	2	CHESTER CT	T	2	CROTON PARK RD	T	2	EAST HILL RD	M	1	FOWLER AVE	M	1
ANTON PL	M	1	BLAKE LN	T	2	CHESTER W HARRISON DR CHESTNUT ST	T	3	CRUGERS AVE	T	3	EDGEWOOD RD	T	2	FOWLER CT	M	1
ANTONIO CT	T	3	BLUESTONE LN	T	2	CHIUSA LN	T	2	CRUGERS RD	T	3	EDWARD ST	M	1	FOX HILL RD	M	1
APPLE HILL DR	T	2	BONNIE HOLLOW LN	T	3	CLARA CT	M	1	CRUGERS STATION RD	T	3	ELENA CT	T	2	FOX RUN RD	T	3
APPLEBEE FARM LN	T	3	BOULDER DR	T	3	CLINTON AVE	T	2	CRUMB PL	M	2	ELENA DR	T	2	FRANCES DR	T	3
APPLEBEE FARM RD	T	3	BRAMBLEBUSH RD	T	3	COACHLIGHT SQ	T	3	CRYSTAL CT	T	3	ELIOTT ST	T	3	FREDERICK ST	M	1
AQUEDUCT PL	M	1	BRANDEIS AVE	M	1	COBBLERS WAY	T	2	CYNTHIA RD	M	1	ELLEN CT	T	3	FRANK GUICHAUD	T	2
ARLINGTON CT	T	3	BRIAR LN	M	2	COBBLESTONE LN	T	2	CYPRESS LN	T	2	ELM RD	M	1	FURNACE BROOK DR	T	2
ARLO LN	M	2	BRIDGE LN	T	3	COLABAUGH POND	T	3	<b>- D -</b>			ELM ST (CROTON PARK COLONY) ELM ST (FREDERICK ST) ELY RD	T	2	FURNACE DOCK RD (CROTON AVE TO WASHINGTON ST)	T	2
			BROADIE ST	M	1				DALE AVE	M	1						
			BROOK DR	M	1				DAMIAN WAY	T	2						

Garbage Bulk			Garbage Bulk			Garbage Bulk			Garbage Bulk			Garbage Bulk			Garbage Bulk		
Street	Route	Route	Street	Route	Route	Street	Route	Route	Street	Route	Route	Street	Route	Route	Street	Route	Route
<b>- F -</b>			<b>- H -</b>			<b>- J -</b>			<b>- L -</b>			<b>- M -</b>			<b>- N -</b>		
FURNACE DOCK RD (WASHINGTON ST TO RIVER)	T	3	HIGH RD	T	3	JAY RD	M	1	LAURIE RD	M	1	MAPLE ROW	M	2	NICKELBY PL	T	2
FURNACE WOODS RD	T	2	HIGH ST	M	2	JEAN DR	M	1	LENT AVE	T	3	MARILYN RD	M	1	NORDIC DR	T	2
<b>- G -</b>			HIGHLAND AVE (DOGWOOD RD TO ALBANY POST)	M	1	JEROME DR	M	2	LENT ST	M	1	MARISA CT	T	3	NORTHDRIDGE RD	T	2
GABRIEL DR	M	1	HIGHLAND AVE (Verplanck)	M	3	JO DR	M	1	LEXINGTON AVE (FROM RED MILL TO RT 6)	M	1	MARK PL	T	2	NORTH ST (OFF ALLAN ST)	M	1
GALLOWAY LN	T	2	HIGHLAND DR (CONTINENTAL VILLAGE)	M	1	JOHN ALEXANDER DR	T	2	LEXINGTON AVE (RT 6 TO RT 202)	M	2	MARSALA CT	T	2	NORTH ST (OFF SUNSET RD )	T	3
GALLOWES HILL RD	M	1	HILLSIDE DR	T	2	JOHN CAVA LN	T	2	LINCOLN AVE	M	2	MATASAC RD	T	2	<b>- O -</b>		
GILBERT ST	M	1	HILLTOP DR	T	2	JOHN DORSEY DR	M	2	LINCOLN PL	M	1	McDOUGAL LN	M	1	OAK LN	T	2
GILMAN LN	T	2	HILLVIEW CT	T	2	JOHN ST	M	2	LINCOLN RD	T	3	McGUIRE LN	T	3	OAK PL	T	3
GIORDANO DR	T	2	HILLVIEW PL	M	1	JONATHAN RD	T	3	LINDA LN	T	3	MEADOW CT	T	2	OAK RD	T	3
GLEN LN	T	3	HOLLIS LN	T	3	JOSEPH WALLACE DR and JW EAST	T	3	LINDA PL	M	1	MEADOW RD	T	3	OAK ST (OREGON RD)	M	1
GLENWOOD DR	T	3	HOLLOWBROOK CT (N, S & W)	M	1	JOSHUA DR	T	3	LISA CT	T	3	MEADOW SWEET	T	2	OAK ST (CROTON PARK RD)	T	2
GRACE LN	T	3	HOLLOWBROOK DR	M	1	JUNIPER LANE	T	2	LITTLE LAKE RUN	T	3	MILANO CT	T	3	O'CONNOR CT	T	3
GRANITE RD	T	2	HOLLOWBROOK LN	M	1	JUSTIN CT	T	2	LITTLE LAKE RIDGE	T	3	MILFORD CLOSE	T	2	OGDEN AVE	M	2
GREENLAWN RD	T	2	HOLLOWBROOK PL	M	1	<b>- K -</b>			LOCKWOOD RD	M	1	MILL CT	M	1	OLD ALBANY POST RD (NORTH)	M	1
GROTON PLACE	T	2	HOLLOWBROOK RD	M	1	KAMP ST	M	1	LOCUST AVE (FROM OREGON RD TO RT 6)	M	1	MILLINGTON RD	M	1	OLD ALBANY POST RD (SOUTH)	T	3
<b>- H -</b>			HOLLOWBROOK DR	M	1	KENT DR	T	2	LOCUST AVE (RT 6 TO RT 202)	M	2	MONTGOMERY CROSSWAY	M	1	OLD CROMPOND RD (RT 202 TO YKTWN)	T	2
HABITAT LN	T	2	HOLLOWBROOK LN	M	1	KINGS FERRY RD (9A to SunsetRd)	T	3	LOGWYNN LN	M	1	MONTO DR	T	2	OLD LOCUST AVE	M	2
HALE HOLLOW RD	T	3	HOLLOWBROOK PL	M	1	KINGS FERRY RD (Sunset to 6th St)	M	3	LONGVIEW RD	T	3	MONTROSE POINT RD	T	3	OLD OREGON RD	M	1
HAMPTON PL	M	1	HOLLOWBROOK RD	M	1	KINGS LN	T	3	LOUIS LN	T	3	MONTROSE STATION RD (FROM 9A TO WASHINGTON)	T	3	ORCHARD ST	T	3
HAND PL	M	1	HOOD PLACE	M	1	KINGSTON AVE	M	1	LUCS LN	M	1	MONTROSE STATION RD (MAPLE TO WASHINGTON)	T	2	OREGON RD	M	1
HARMONY HILL	T	2	HORTON LN	T	2	KNOLLWOOD RD	M	1	LYNCREST RD	T	2	MOUNTAIN VIEW RD (CROTON AVE)	T	2	ORIOLE LN	T	2
HARPER AVE	T	3	HOYE DR	T	2	<b>- L -</b>			LYNWOOD CT	T	2	MOUNTAIN VIEW RD (RED MILL)	M	1	OVERHILL RD	M	1
HARRISON CT	T	2	HUNT AVE	T	3	LAFAYETTE AVE	T	2	LYNWOOD RD	T	2	MOUNTAINSIDE TRAIL	T	2	OVERLOOK OVAL	T	2
HARRISON DR	T	2	<b>- I -</b>			LAKE RD	T	2	<b>- M -</b>			MT AIRY RD (E,W&S)	T	3	OVERLOOK CT	M	1
HEADY ST	M	1	INWOOD LN (E,W)	T	2	LAKE ST	M	1	MacARTHUR BLVD	M	1	MOUNTAIN VIEW RD (MOUNTAINSIDE TRAIL)	M	1	<b>- P -</b>		
HEATH TER	M	1	<b>- J -</b>			LAKELAND AVE	M	2	MacGREGOR LN	M	2	MOUNTAINSIDE TRAIL	T	2	PAMELA RD	T	3
HELENA AVE	M	2	JACK RD	M	1	LAKEVIEW AVE (E & W)	T	2	MAGNOLIA LN	T	2	MT AIRY RD (E,W&S)	T	3	PARK DR	M	1
HENNING DR	T	3	JACOBS HILL	M	2	LAKEVIEW DR	T	3	MAIDEN LN	T	3			PARKWAY DR	M	2	
HENRY PL	T	2	JACOB ST	T	2	LAKEVIEW RD	M	1	MANDY CT	T	3			PAULDING LN	M	2	
HICKORY LN	T	2	JAMES ST (Montrose)	T	3	LANCASTER AVE	T	3	MAPLE AVE	T	2	<b>- N -</b>			PEACHTREE DR	T	2
HICKORY ST	T	2	JAMES ST (Verplanck)	M	3	LARCH ST	T	2	MAPLE CT	T	2	NANCY LN	T	2	PEEKSKILL HOLLOW	M	1
			JANET LN	T	2	LAURA CT	T	2	MAPLE MOOR LN	T	2	NAPA CT	T	2	TPKE		
						LAUREL DR	M	1				NATHALIE CT	T	2	PERRY PL	M	1
						LAUREL HILL RD	T	3				NEWMAN CT	M	2	PERRY ST	M	1
														PETER A BEET DR	T	2	

Garbage Bulk			Garbage Bulk			Garbage Bulk			Garbage Bulk			Garbage Bulk			Garbage Bulk		
Street	Route	Route	Street	Route	Route	Street	Route	Route	Street	Route	Route	Street	Route	Route	Street	Route	Route
<b>- P -</b>			<b>- R -</b>			<b>- S -</b>			<b>- S -</b>			<b>- W -</b>			<b>- Y -</b>		
PIERCE ST	M	1	REYNOLDS LN	T	3	SCOTT LN	M	1	SUNSET AVE	T	3	WALNUT RD	M	1	YORKSHIRE CT	T	3
PINE HILL RD	T	3	RICHMOND PL	M	1	SEWARD CT	T	3	SUNSET LN	T	3	WALNUT ST (CROTON PARK RD)	T	2	YORKTOWN RD (RTE 129)	T	3
PINE LAKE CO-OP	T	2	RICK LN	T	2	SHAW HWY	T	2	SUNSET RD	T	3	WASHINGTON ST (PEEKSKILL LINE TO WATCH HILL RD)	T	3	YOUNG ST	M	1
PINE LN	T	3	RIDGE RD (LAFAYETTE)	T	2	SHELDON P COONS PL	T	3	SUSAN LN	M	1	<b>- T -</b>					
PINE RD	M	2	RIDGE RD (WATERBURY)	M	1	SHERWOOD RD	M	1	<b>- T -</b>			WASHINGTON ST (WATCH HILL RD TO FURNACE DOCK)	T	2			
PINE ST (LAKE PEEKSKILL)	M	1	RIPLEY PL	T	3	SHIPLEY DR	M	2	TAMARACK DR	T	2	WATCH HILL RD (FROM 9A TO WASHINGTON ST)	T	3			
POND MEADOW RD	T	3	RITA DR	M	2	SHORT HILL RD	T	3	TAYLOR AVE	M	2	WATCH HILL RD (FROM 9A TO WASHINGTON ST)	T	3			
POND RD	M	2	ROA HOOK RD	M	1	SKYLARK DR	M	1	TEATOWN RD	T	3	WATCH HILL RD (WASHINGTON TO FURNACE DOCK)	T	2			
PONDVIEW CT	T	2	ROBBIE RD	T	2	SKYTOP DR	T	3	TERESA LN	T	3	WATERBURY PKWY	M	1			
POPS RD	M	2	ROBERTA DR	T	2	SMITH RD	M	1	TERRACE PL	M	1	WATSON ST	M	1			
POWDER HORN RD	T	2	ROCK HILL DR	T	2	SNIFFEN MTN RD	T	2	THE OVAL	M	1	WESTBROOK CT	M	1			
PRISCILLA CT	M	1	ROCKLEDGE DR	T	3	SOMERSET LN	T	2	THRUSH WAY	T	2	WESTBROOK DR	M	1			
PUGSLEY PKWY	M	1	ROCKY RIDGE RD	T	2	SONOMA RD	T	2	TODDVILLE LN	M	2	WESTMINSTER DR	T	3			
PUMPHOUSE RD	M	1	ROME CT	T	2	SOUTH HILL RD	M	1	TOMMY THURBER LN	T	3	WHARTON DR	M	1			
PUTNAM PARK RD	M	1	ROOT ST	M	1	SOUTH MOUNTAIN PASS	M	1	TOWNSEND RD	M	2	WHARTON LN	M	1			
PUTNAM RD	M	1	ROSALIND DR	T	2	SOUTH TRAIL	M	1	TRAVIS AVE	T	3	WHEELER DR	M	1			
<b>- Q -</b>			ROUND TREE LN	T	3	SOUTHGATE DR	T	2	TRAVIS LN	T	3	WHITE BIRCH LN	T	2			
QUAKER BRIDGE RD	T	3	ROUTE 6 (EVEN #S)	M	1	SPICE HILL RD	T	3	TRINITY AVE	T	3	WHITE LION DR	T	3			
QUAKER HILL CT (E & W)	T	3	ROUTE 6 (ODD #S)	M	2	SPRING LN	M	1	TROLLEY RD (NORTH)	M	1	WHITTIER AVE	M	2			
QUAKER HILL DR	T	3	ROUTE 129 (CROTON TO YORKTOWN LINE)	T	3	SPRING VALLEY RD (New Castle to Yktown)	T	3	TROLLEY RD (SOUTH)	T	3	WILCOX LN	M	1			
QUAKER RIDGE RD	T	3	ROUTE 9A (CROTON TO BUCHANAN)	T	3	SPRINGFIELD CT	T	2	TRYON CIRCLE	M	1	WILLIAM PUCKEY DR	T	2			
QUARRY ACRES (ALL)	T	2	RUSTLING LN	T	2	SPRINGVALE RD	T	3	<b>- U -</b>			WILLOW PL	M	1			
<b>- R -</b>			RUTH RD	M	1	SPROUT BROOK	M	1	UDELL CT	M	1	WILSON PL	M	1			
RADIO TERR	M	1	<b>- S -</b>			SPRUCE LN	T	2	UPLAND LN	T	3	WINDSOR RD	T	3			
RANCHO DR	M	1	SASSI DR	T	3	SPY POND RD	M	1	<b>- V -</b>			WINTHROP DR	M	1			
RAYMOND ST	T	3	SASSINORO BLVD	T	2	STEPHEN LANE	T	2	VALERIA CONDOS	T	2	WOODDALE AVE	T	3			
REBER RD	T	3	SCALA CT	T	3	STEVENSON AVE	M	1	VALERIE LN	M	1	WOODLAKE DR	T	3			
RED MILL RD	M	1	SCENIC CIRCLE	T	3	STONEFIELD CT	M	1	VALLEY VIEW RD	M	1	WOODLAND BLVD	M	1			
RED OAK LN	T	2	SCENIC DR	T	3	STRANG LN	M	1	VAN CORTLANDT PL	M	1	WOODY BROOK LN	T	3			
REDWOOD ST	T	2	SHADYBROOK LN	T	2	STUART RD	M	1	VARIAN RD	M	1	WREN CT	T	2			
REGINA AVE	M	2	SCHOOL RD	M	2	SUMMIT PL	T	3	VERONICA CT	T	2						
RENEE GATE	M	1	SCHOOL ST	M	1	SUNLIT PASS	T	2	VERPLANCK (ALL STREETS AND AVENUES)	M	3						
REVOLUTIONARY RD	M	1	SUNNY WAY	T	2	SUNLIT TRAIL	T	2	VICTORIA AVE	T	3						

Cortlandt Community Composting - Did you know that food scraps account for the largest portion of waste in landfills, making up 30% of the municipal solid waste stream? Recycling food scraps into compost returns minerals and nutrients to the soil that would otherwise be lost when scraps are instead incinerated. Food Scrap Recycling bin kits can be picked up at the Purchasing Office Building at Town Hall, 1 Heady Street, for \$15.00.

Food Scrap Drop-off Site Location: Cortlandt Youth and Recreation Center - 3 Memorial Drive, Croton-on-Hudson and Muriel H. Morabito Community Center - 29 Westbrook Drive, Cortlandt Manor

## CORTLANDT COMMUNITY COMPOSTING GUIDELINES

ACCEPTED ITEMS	NOT ACCEPTABLE
<ul style="list-style-type: none"> <li>• Fruits and Vegetables (Remove Stickers, Bands, and Ties)</li> <li>• Meat and Poultry (Bones OK)</li> <li>• Fish and Shellfish (Shells OK)</li> <li>• Dairy Products and Eggshells</li> <li>• Rice, Grains, Bread and Pasta</li> <li>• Chips and Snacks</li> <li>• Beans, Nuts and Seeds</li> <li>• Leftover and Spoiled Food</li> <li>• Coffee Grounds (Paper Filters OK)</li> <li>• Tea Bags (No Staples)</li> <li>• Cut Flowers</li> </ul>	<ul style="list-style-type: none"> <li>NO PLASTIC BAGS, BIODEGRADABLE BAGS, PACKAGING, STICKERS, RUBBER BANDS OR TWIST TIES.</li> <li>NO PET WASTE, BABY WIPES, FOIL, PAPER PLATES OR PAPER TOWELS</li> <li>NO PLASTIC, GLASS, METAL OR KITCHENWARE</li> <li>NO YARD TRIMMINGS AND TREE DEBRIS</li> <li>NO MEDICAL WASTE (SYRINGES, GAUZE, BANDAGES, ETC.)</li> <li>NO ELECTRONIC WASTE, CHEMICALS AND CLEANING SUPPLIES</li> </ul>

FOOD SCRAPS MAY BE LOOSE OR IN COMPOSTABLE BPI CERTIFIED BAGS



COMPOSTABLE  
BPI

Compostable Plastics and Packaging: Look for the "BPI Certified" logo. Check brands and products online at <http://products.bpiworld.org/>

THANK YOU FOR YOUR COOPERATION AND PARTICIPATION!

WWW.TOWNOFCORTLANDT.COM/COMPOSTING



SCAN FOR MORE INFORMATION

Westchester County has partnered with PaintCare to greatly expand the county paint recycling program. The Household Material Recovery Facility(HMRF) is now accepting a variety of paints with some restrictions. Please call Westchester County Recycling Hotline for more information at 914-813-5425 or visit their website <https://environment.westchestergov.com/residents/recycling-guidelines/paint-oil-and-latex>



Look for our new Sanitation App on our website  
Download mobile App at Google Play/Apple App Store



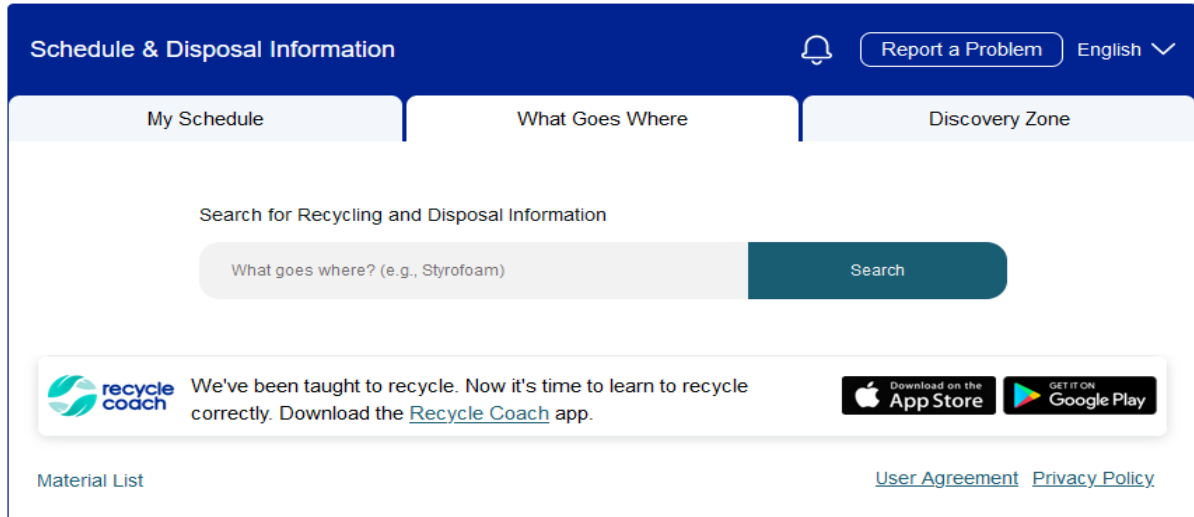
## RECYCLE COACH



Schedule & Disposal Information Report a Problem English English

My Schedule | What Goes Where | Discovery Zone

Search for Recycling and Disposal Information

What goes where? (e.g., Styrofoam) Search

 We've been taught to recycle. Now it's time to learn to recycle correctly. Download the [Recycle Coach](#) app.

[Material List](#) [User Agreement](#) [Privacy Policy](#)



Recycling clothing shouldn't be hard. Helpsy is here to help. Cortlandt has partnered with Helpsy to make sure those clothes don't end up in the trash. Recycle your unwanted clothes, shoes, accessories, linens and other textiles with an easy Helpsy home pickup. For re-wear, reuse, and recycling, we accept items in any condition for all ages and genders as long as they are clean, dry, and odorless. Everything should be kept dry in a closed, plastic bag. Please visit their website [www.helpsy.com](http://www.helpsy.com) or call 1-800-244-6350.



The Town of Cortlandt has passed a local law increasing the allowable garbage and recycling can size specified in the Town Code to 45 gallons (an increase from 30 gallons)

**THE TOWN WILL NO LONGER DUMP OR EMPTY CANS OVER 45 GALLONS**

**Scheduled 2025 Bulk Pick Up Routes**

<b>Route 1</b>	<b>Route 2</b>	<b>Route 3</b>
<b>January 10</b>	<b>January 31</b>	<b>February 7</b>
<b>February 14</b>	<b>February 28</b>	<b>March 14</b>
<b>March 21</b>	<b>March 28</b>	<b>April 4</b>
<b>April 25</b>	<b>May 2</b>	<b>May 9</b>
<b>May 23</b>	<b>June 6</b>	<b>June 13</b>
<b>July 11</b>	<b>July 18</b>	<b>July 25</b>
<b>August 1</b>	<b>August 15</b>	<b>August 22</b>
<b>August 29</b>	<b>September 12</b>	<b>September 26</b>
<b>October 3</b>	<b>October 10</b>	<b>October 24</b>
<b>December 5</b>	<b>December 12</b>	<b>December 19</b>

**Scheduled 2025 Organic Pick Ups**

<b>March 7</b>
<b>April 11</b>
<b>May 16</b>
<b>June 27</b>
<b>August 8</b>
<b>September 19</b>
<b>October 31</b>
<b>November 21</b>

# 2025 Sanitation/Recycling Guide Calendar

SANITATION DIVISION

(914) 737-0100

WATER DIVISION

(914) 734-1026

HIGHWAY & PARKS DIVISION

(914) 737-0075

M = Monday Garbage

T = Tuesday Garbage

P = Paper Recycling (Townwide)

C = Commingle (Townwide)

H = Holiday

BR = Bulk Route 1,2 or 3

O = Organic Yard Waste

Christmas tree pick up

(BROWN BAGS ONLY)

## January 2025

Mon	Tues	Wed	Thurs	Fri
		1 H	2 P	3 C
6 M	7 T	8 P	9 C	10 BR1
13 M	14 T	15 P	16 C	17 X-T
20 H	21 M	22 T	23 P	24 C
27 M	28 T	29 P	30 C	31 BR2

## February 2025

Mon	Tues	Wed	Thurs	Fri
3 M	4 T	5 P	6 C	7 BR3
10 M	11 T	12 P	13 C	14 BR1
17 H	18 M	19 T	20 P	21 C
24 M	25 T	26 P	27 C	28 BR2

## March 2025

Mon	Tues	Wed	Thurs	Fri
3 M	4 T	5 P	6 C	7 O
10 M	11 T	12 P	13 C	14 BR3
17 M	18 T	19 P	20 C	21 BR1
24 M	25 T	26 P	27 C	28 BR2
31 M				

## April 2025

Mon	Tues	Wed	Thurs	Fri
	1 T	2 P	3 C	4 BR3
7 M	8 T	9 P	10 C	11 O
14 M	15 T	16 P	17 C	18 H
21 M	22 T	23 P	24 C	25 BR1
28 M	29 T	30 P		

## May 2025

Mon	Tues	Wed	Thurs	Fri
			1 C	2 BR2
5 M	6 T	7 P	8 C	9 BR3
12 M	13 T	14 P	15 C	16 O
19 M	20 T	21 P	22 C	23 BR1
26 H	27 M	28 T	29 P	30 C

## June 2025

Mon	Tues	Wed	Thurs	Fri
2 M	3 T	4 P	5 C	6 BR2
9 M	10 T	11 P	12 C	13 BR3
16 M	17 T	18 P	19 H	20 C
23 M	24 T	25 P	26 C	27 O
30 M				

## July 2025

Mon	Tues	Wed	Thurs	Fri
	1 T	2 P	3 C	4 H
7 M	8 T	9 P	10 C	11 BR1
14 M	15 T	16 P	17 C	18 BR2
21 M	22 T	23 P	24 C	25 BR3
28 M	29 T	30 P	31 C	

## August 2025

Mon	Tues	Wed	Thurs	Fri
				1 BR1
4 M	5 T	6 P	7 C	8 O
11 M	12 T	13 P	14 C	15 BR2
18 M	19 T	20 P	21 C	22 BR3
25 M	26 T	27 P	28 C	29 BR1

## September 2025

Mon	Tues	Wed	Thurs	Fri
1 H	2 M	3 T	4 P	5 C
8 M	9 T	10 P	11 C	12 BR2
15 M	16 T	17 P	18 C	19 O
22 M	23 T	24 P	25 C	26 BR3
29 M	30 T			

## October 2025

Mon	Tues	Wed	Thurs	Fri
		1 P	2 C	3 BR1
6 M	7 T	8 P	9 C	10 BR2
13 H	14 M	15 T	16 P	17 C
20 M	21 T	22 P	23 C	24 BR3
27 M	28 T	29 P	30 C	31 O

## November 2025

Mon	Tues	Wed	Thurs	Fri
3 M	4 H	5 T	6 P	7 C
10 M	11 H	12 T	13 P	14 C
17 M	18 T	19 P	20 C	21 O
24 M	25 T	26 P	27 H	28 C

## December 2025

Mon	Tues	Wed	Thurs	Fri
1 M	2 T	3 P	4 C	5 BR1
8 M	9 T	10 P	11 C	12 BR2
15 M	16 T	17 P	18 C	19 BR3
22 M	23 T	24 P	25 H	26 C
29 M	30 T	31 P	1 H	2 C