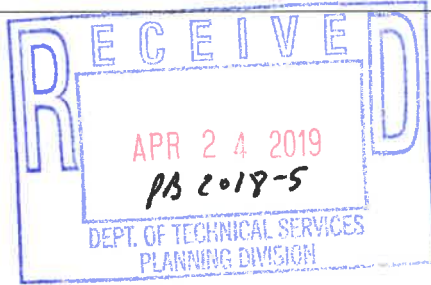




55 Ruscitti Rd  
New Windsor NY 12553  
845/561-3938

4/24/2019



I am sending a site plan for the proposed installation of 2 steel propane cages for Lakeside Hardware that wants to begin a propane exchange program. The cages will be out of the traffic flow and will be protected from vehicular intrusion by NFP Code compliant bollards. The cages are each 44" wide by 28" deep by 65" high. Looking at a total footprint of 55 Sq. Ft. including the bollards. Thank you for your time reviewing this matter.

Warm regards,

Allyson Mann  
Install Coordinator- Blue Rhino  
allysonmann@ferrellgas.com

- Copies ..... <sup>1</sup> Planning Board
- ..... Town Board
- ..... Zoning Board
- ..... <sup>1</sup> Legal Dept.
- ..... <sup>1</sup> DOTS Director
- ..... C.A.C.
- ..... A.R.C.
- ..... Applicant
- ..... \_\_\_\_\_
- ..... \_\_\_\_\_
- Sent 4/25/19



# BLUE RHINO TANK EXCHANGE SITE PLAN

Date of Plan: 4/2019

Plan Prepared by: R. Brown/ A. Mann

Blue Rhino of New Windsor  
 55 Ruscitti Rd  
 New Windsor NY 12553  
 Tel: 845/561-3938  
 Fax: 845/245-2120

Retail Name: Lakeside Hardware  
 Address: 3120 Lexington Ave  
 City, Street & Zip: Mohegan Lake NY 10547  
 Tel: 914-528-0030

ACCT#: 186469

If there is no answer please leave a message and we will return your call A.S.A.P

Prepared for 2 Displays each holding 18 twenty pound DOT Cylinders for a total quantity of 36 cylinders

DISPLAYS BOLTED DOWN

YES

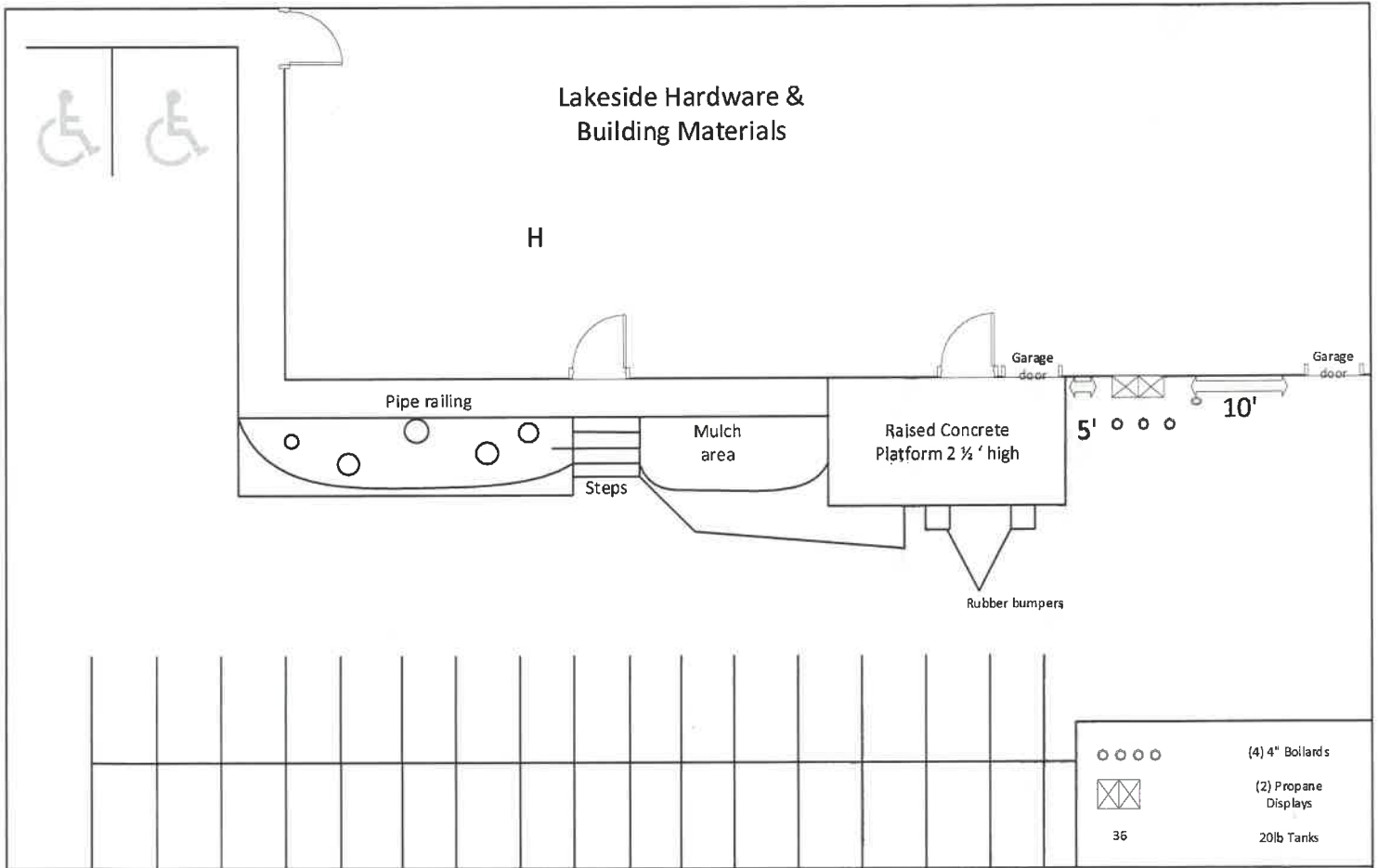
NO

Vehicle Protection

YES

NO

**EMERGENCY PHONE NUMBERS (24/7/365): BLUE RHINO 1-800-258-7466 OPTION 5**



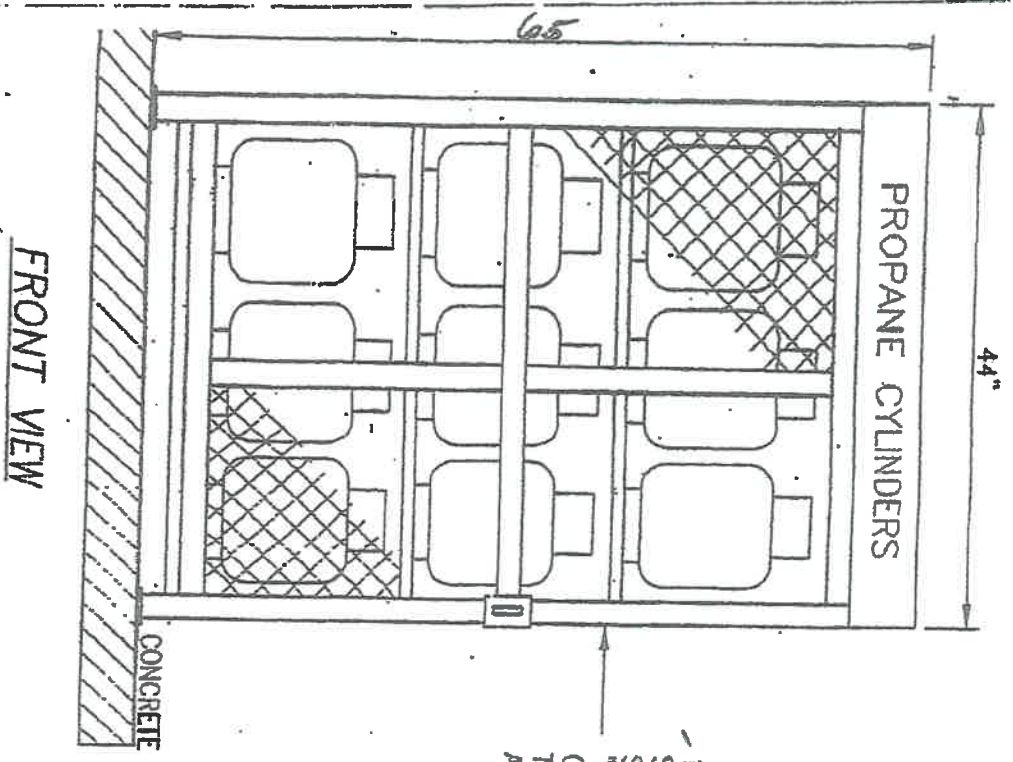
SCALE: 1/8" = 1'  
 INDICATE NORTH ON THE COMPASS AT LEFT  
 DEPICT AREA AT LEAST 50 FEET IN EACH DIRECTION  
 SHOW DISTANCES FROM DISPLAY TO DOORS, OUT LETS & EXTINGUISHERS LABEL ALL ITEMS ON DRWINGS.  
 INCLUDE EXTINGUISHER LOCATIONS. INDICATE EACH DISPLAY UNIT OF 18 THIS WAY

SITE PLAN APPROVED BY MANAGER (BLUE RHINO)

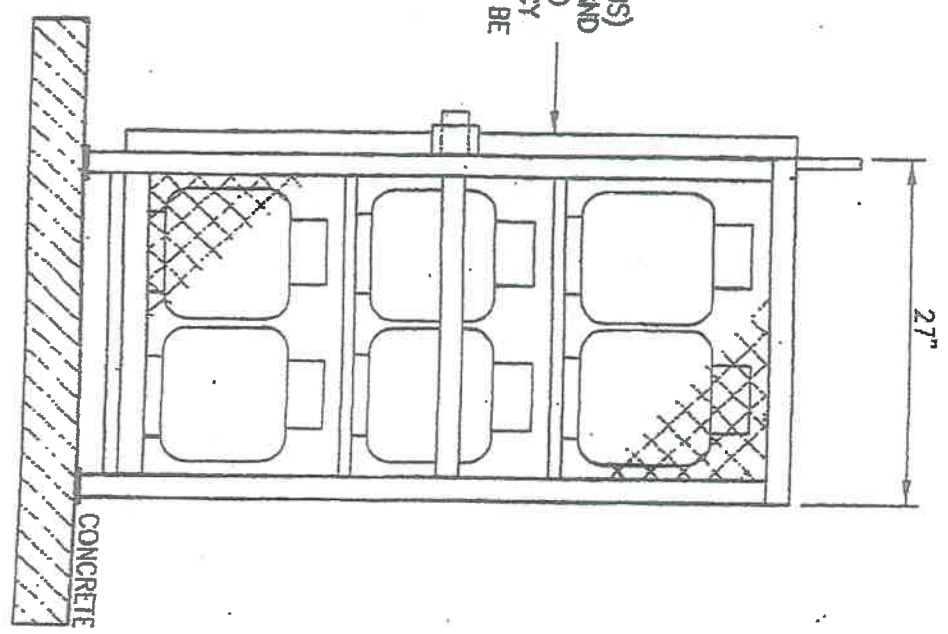
COMPLETED SITE PLAN APPROVED BY:

X \_\_\_\_\_

X \_\_\_\_\_



18 UNIT PROPANE CYLINDER STORAGE CABINET (TOTAL 320 LBS) SIGNAGE INDICATING "PROPANE" AND "NO SMOKING" TO BE AFFIXED TO CABINET. A 24 HOUR EMERGENCY TELEPHONE NUMBER IS ALSO TO BE AFFIXED TO CABINET.



FRONT VIEW

SIDE VIEW

DETAIL "B"

TYPICAL CYLINDER EXCHANGE CABINET

SCALE: NONE

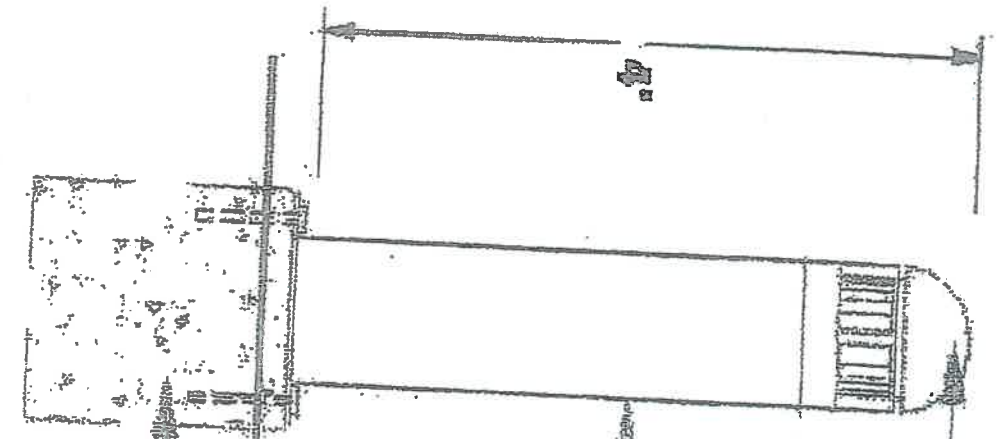
Impact Protection Information

**Bollards:** The posts are 4 in. inner diameter, schedule 40 steel pipe, 7 ft. lengths, 3/4 in. in ground. They are filled with concrete and painted yellow.

**Jersey Barriers:** Concrete barriers mounted to ground with rebar.

*Propane Exchange*

*Display set-up*



BOLLARD CAPPED WITH  
CONCRETE AND PAINTED  
YELLOW

4" DIAMETER STEEL  
BOLLARD FILLED WITH  
CONCRETE 4' ABOVE  
GROUND

15" DIAMETER HOLE  
3' DEEP FILLED WITH  
CONCRETE

BLUE RHINO 4" BY 7' STEEL BOLLARD INSTALL