



MASER CONSULTING P.A.
 Customer Loyalty through Client Satisfaction
 www.maserconsulting.com

Office Locations:

- NEW JERSEY
- NEW YORK
- PENNSYLVANIA
- VIRGINIA
- FLORIDA
- NORTH CAROLINA
- NEW MEXICO
- MARYLAND
- GEORGIA
- TEXAS
- TENNESSEE
- COLORADO

State of N.Y. C.O.A. 0008671 / 0008821

Copyright © 2015. Maser Consulting All Rights Reserved. This drawing and all the information contained herein is authorized for use only by the party for whom the services were contracted or to whom it is certified. This drawing may not be copied, reused, modified, distributed or relied upon for any other purpose without the express written consent of Maser Consulting, P.A.

811 PROTECT YOURSELF
 ALL STATES REQUIRE NOTIFICATION OF EXCAVATORS DESIGNERS OR ANY PERSON PERFORMING TO EXCAVATE THE BARRIER SURFACE ANYWHERE IN ANY STATE.
 Know what's below.
 Call before you dig.
 FOR STATE SPECIFIC DIRECT PHONE NUMBERS VISIT: WWW.CALL811.COM

REV	DATE	DESCRIPTION
1	11/11/15	REVISED PER NYSDOT PLAN
2	12/01/15	REVISED PER NYSDOT MEETING COMMENTS
3	01/07/16	REVISED BACKPLATES AND ADDITIONAL LEFT TURN PHASE

PRELIMINARY

PRELIMINARY CONCEPT PLAN
 FOR
 GASLAND CORTLANDT
 (LEFT TURN ALTERNATE)
 U.S. ROUTE 6
 TOWN OF CORTLANDT
 WESTCHESTER COUNTY
 NEW YORK

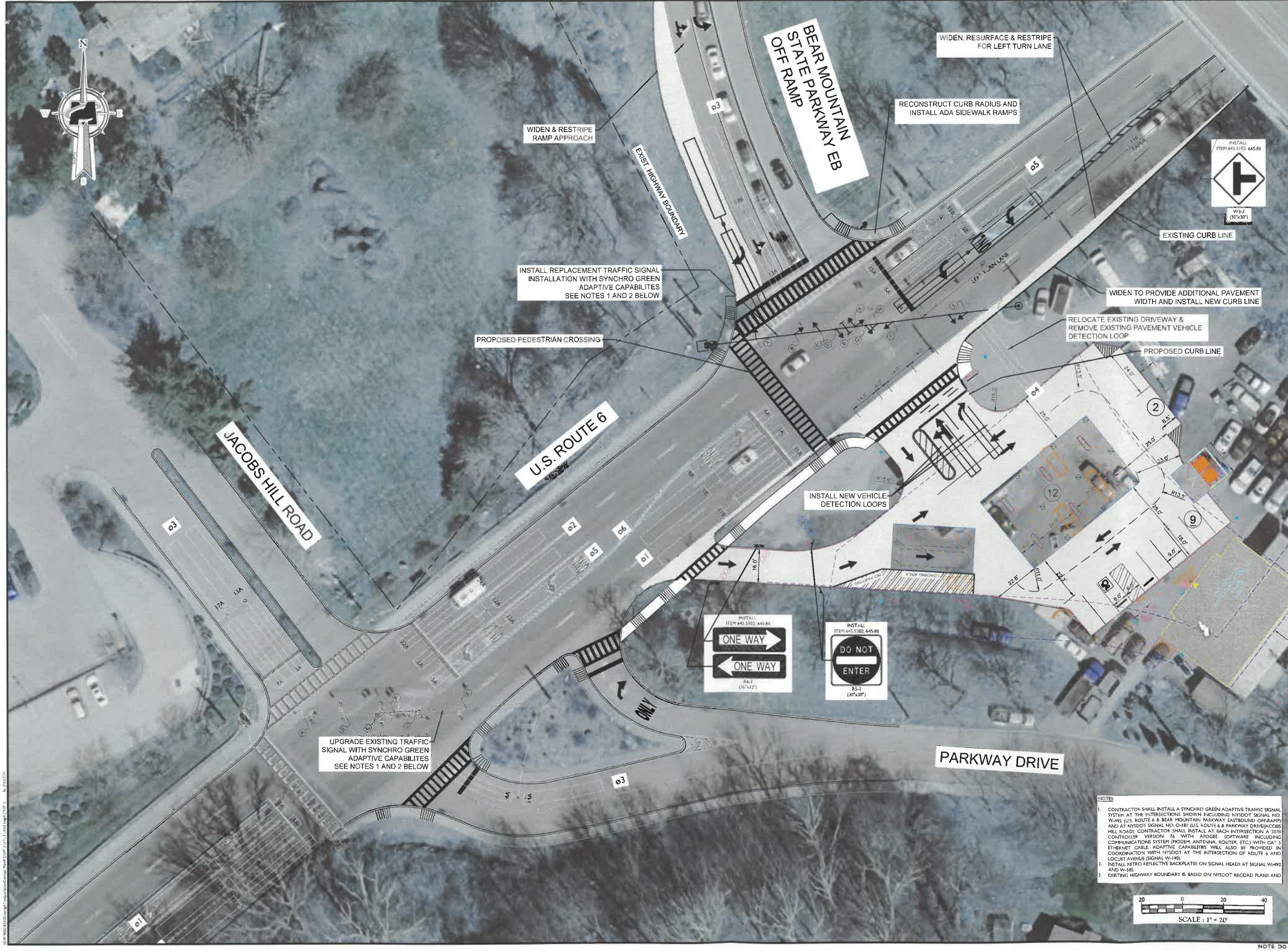
IS APPROXIMATE

MASER CONSULTING P.A.
 400 Columbus Avenue
 Suite 1802
 Valhalla, NY 10595
 Phone: 914.347.7300
 Fax: 914.347.7266

AS SHOWN	DATE	DRAWN BY	CHECKED BY
1/10/16	06/15	JPM	PJC

PROJECT NUMBER: 11003182A DRAWING NAME: ALNPT 2-1-FTL-3 SHEET NUMBER: 01

CONCEPTUAL IMPROVEMENT PLAN
 CIP-1R-3 LANE



NOTES:

- CONTRACTOR SHALL INSTALL A SYNCHRO GREEN ADAPTIVE TRAFFIC SIGNAL SYSTEM AT THE INTERSECTIONS SHOWN INCLUDING NYSDOT SIGNAL NO. W-492 (U.S. ROUTE 6 & BEAR MOUNTAIN PARKWAY EASTBOUND OFF-RAMP) AND AT NYSDOT SIGNAL NO. Q-181 (U.S. ROUTE 6 & PARKWAY DRIVE/JACOBS HILL ROAD). CONTRACTOR SHALL INSTALL AT EACH INTERSECTION A 1070 CONTROLLER VERSION 76 WITH APOGEE SOFTWARE INCLUDING COMMUNICATIONS SYSTEM (MODEM ANTENNA, ROUTER, ETC.) WITH CAT 3 ETHERNET CABLE. ADAPTIVE CAPABILITIES WILL ALSO BE PROVIDED IN COORDINATION WITH NYSDOT AT THE INTERSECTION OF ROUTE 6 AND LOCUST AVENUE (SIGNAL W-140).
- INSTALL RETRO REFLECTIVE BACKPLATES ON SIGNAL HEADS AT SIGNAL W-492 AND W-585.
- EXISTING HIGHWAY BOUNDARY IS BASED ON NYSDOT RECORD PLANS AND IS APPROXIMATE.

