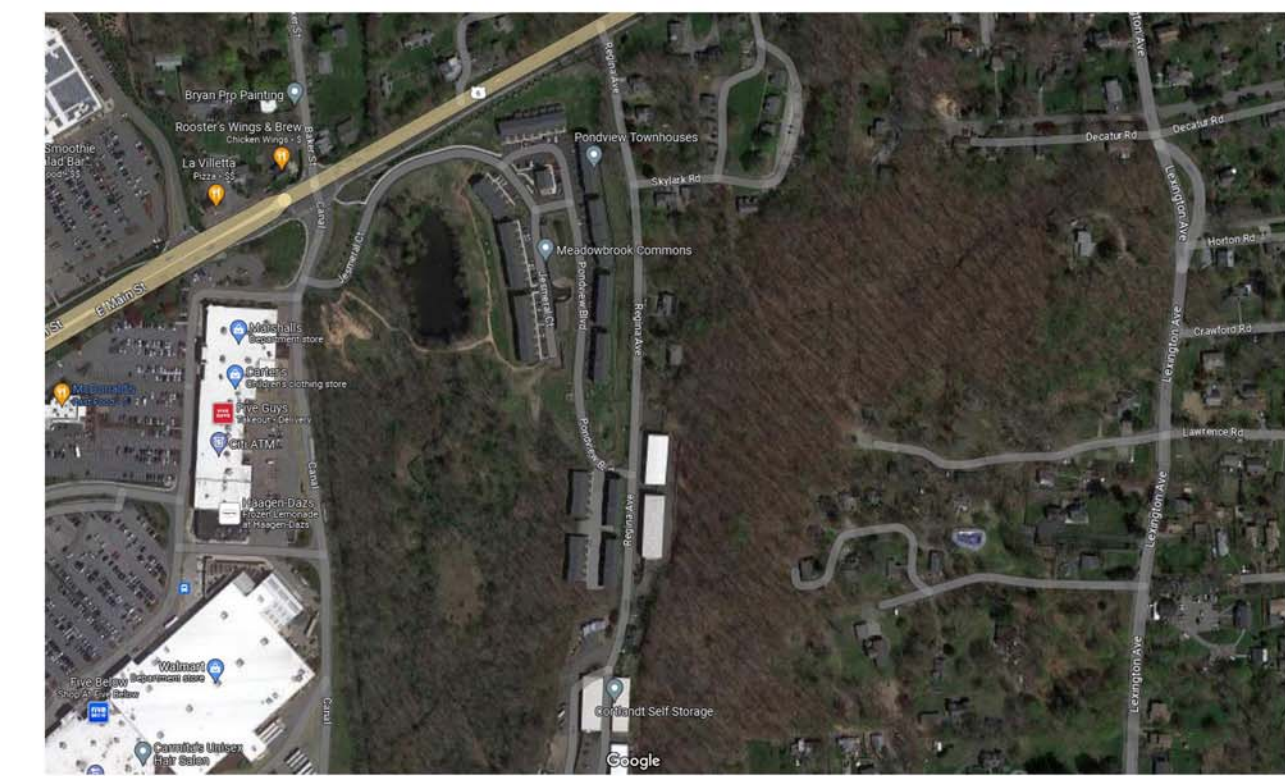
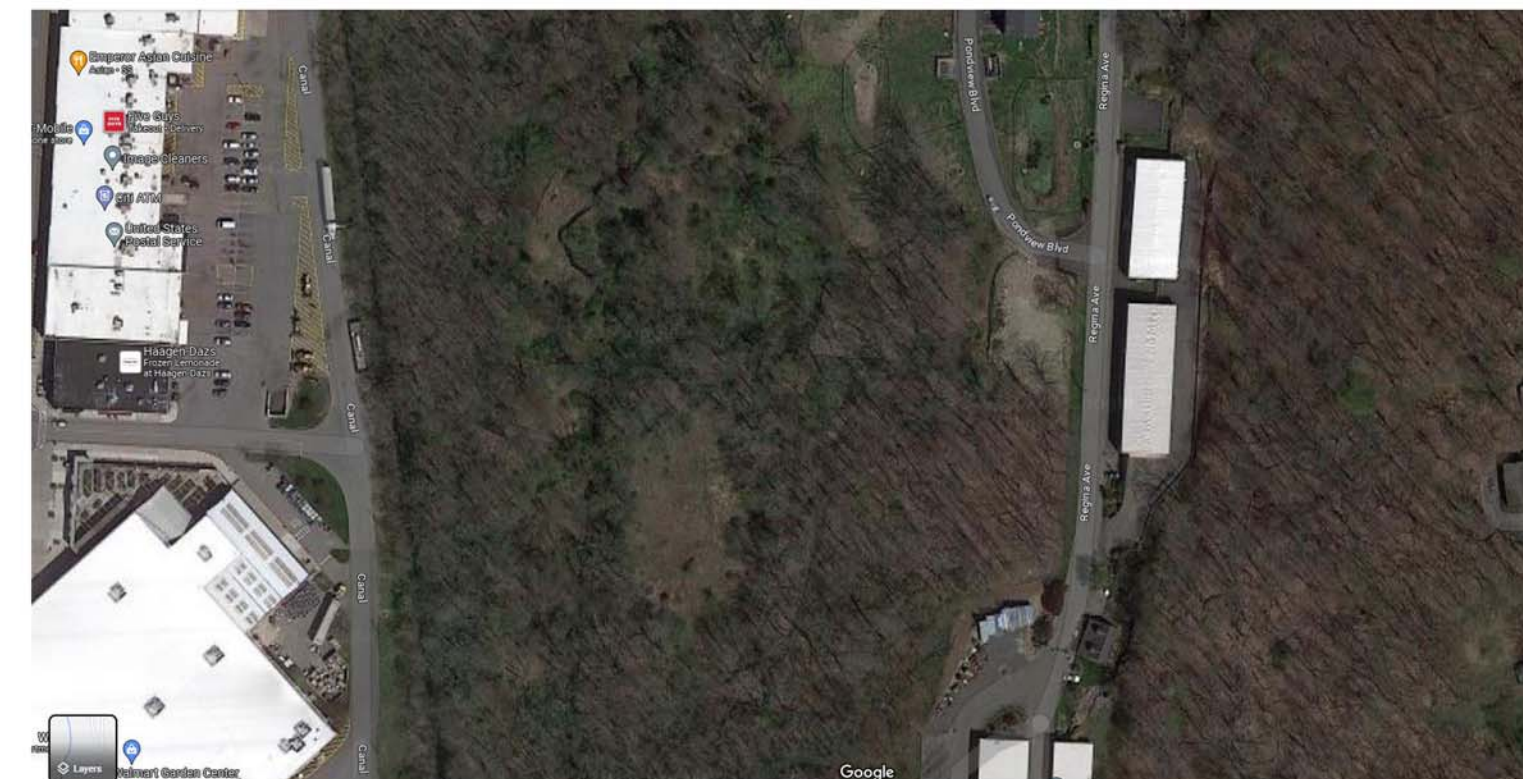


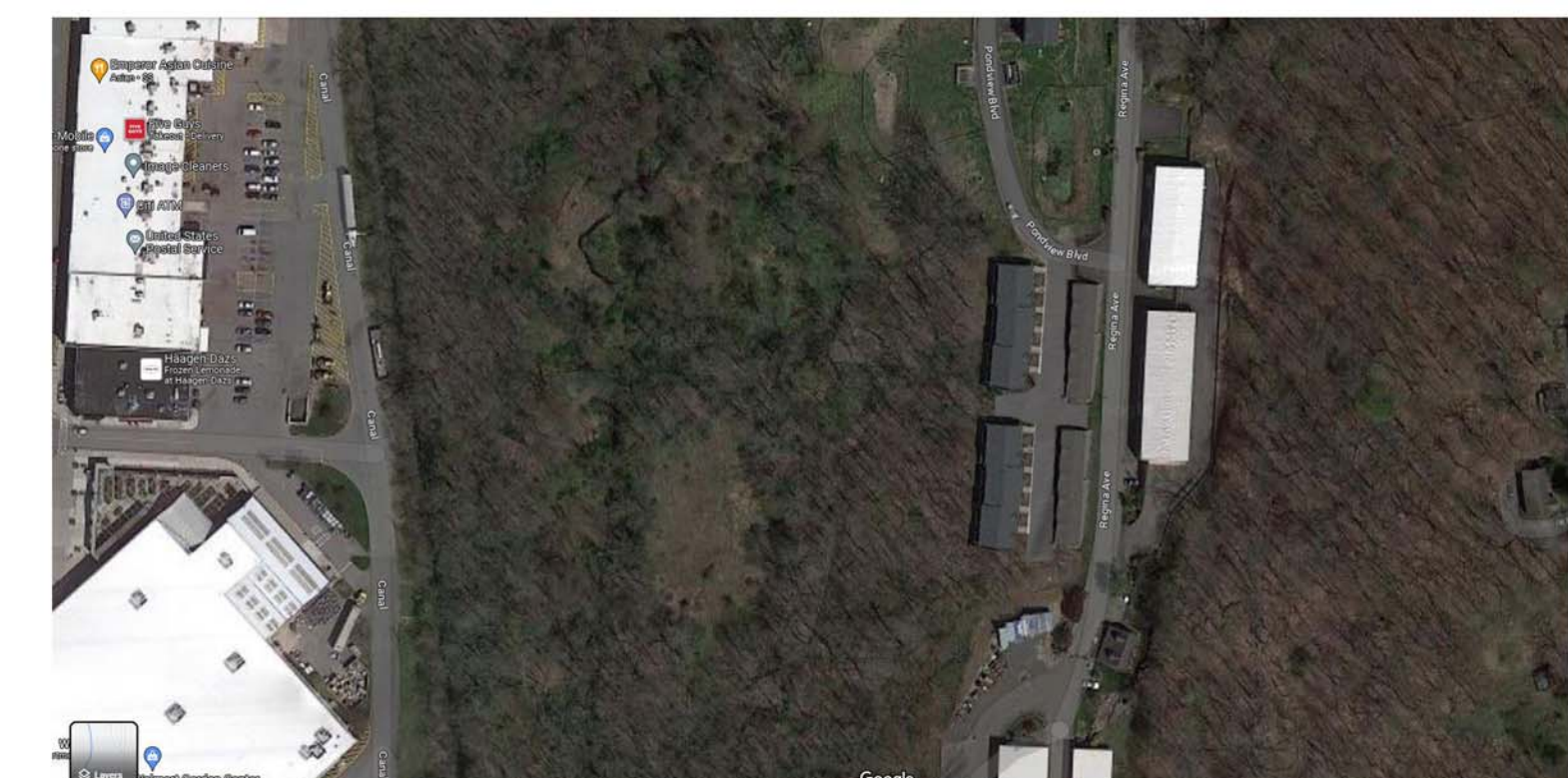
**EXISTING SITE - AERIAL VIEW**  
SCALE: N.T.S.



**PROPOSED SITE - AERIAL VIEW**  
SCALE: N.T.S.



**EXISTING SITE - AERIAL VIEW (CLOSE)**  
SCALE: N.T.S.



**PROPOSED SITE - AERIAL VIEW (CLOSE)**  
SCALE: N.T.S.



**PROPOSED SITE - NEAREST NEIGHBORS**  
SCALE: N.T.S.

**HERNANE DE ALMEIDA**  
PROFESSIONAL ENGINEER  
26 GLENVUE DRIVE  
CARMEL, NY 10512  
914-469-9741  
HERNANE@ENGINEER.COM

CLIENT  
**RYAN MAIN, LLC**  
C/O  
FINKELSTEIN-MORGAN  
111 BROOK ST.  
SCARSDALE, NY 10583

PROJECT  
**PROPOSED CLUBHOUSE**  
MEADOWBROOK COMMONS  
TOWN OF CORTLANDT,  
NY 10567

DATE: 8/23/2023	
NO.	DESCRIPTION

**PRESENTATION ILLUSTRATIONS**  
SHEET TITLE

SEAL  
IT IS A VIOLATION OF THE NEW YORK STATE EDUCATION LAW FOR ANY PERSON, UNLESS ACTING UNDER THE DIRECTION OF A LICENSED PROFESSIONAL ENGINEER, TO ALTER ANY ITEM ON THIS DRAWING AND/OR RELATED SPECIFICATION. ALL ALTERATIONS MUST BE MADE IN COMPLIANCE WITH THE NEW YORK STATE EDUCATION LAW. THE PROFESSIONAL ENGINEER WHOSE SEAL APPEARS HEREON ASSUMES NO RESPONSIBILITY FOR ANY SUCH ALTERATION OR RE-USE WITHOUT HIS CONSENT.  
ALL CONDITIONS OF APPROVAL AS NOTED IN FORMAL LETTERS OF APPROVAL OR FINDINGS ARE A PART OF THE APPROVED SITE PLAN. SUBDIVISION OR VARIANCE PLATS, DRAWINGS OR PLANS, AND ARE HEREBY REFERENCED FOR ADDITIONAL APPROVAL DETAILS.

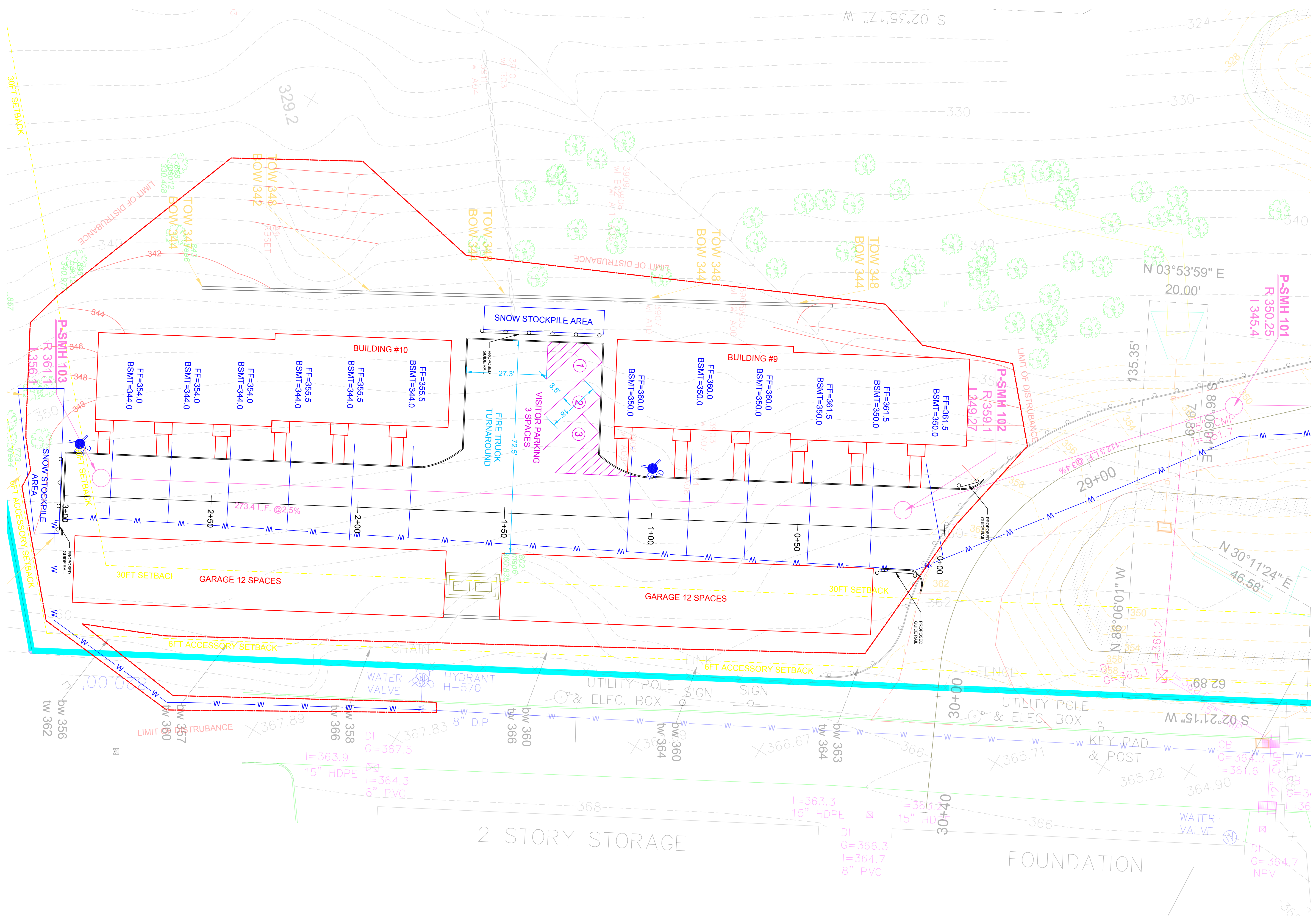
SHEET  
**P 1.0**

NO.	DATE	DESCRIPTION

**PRESENTATION ILLUSTRATIONS**

SEAL

IT IS A VIOLATION OF THE NEW YORK STATE EDUCATION LAW FOR ANY PERSON UNLESS ACTING UNDER THE DIRECTION OF A LICENSED PROFESSIONAL ENGINEER, TO ALTER ANY ITEM ON THIS DRAWING AND/OR RELATED SPECIFICATION. ALL ALTERATIONS MUST BE MADE IN COMPLIANCE WITH THE NEW YORK STATE EDUCATION LAW. THE PROFESSIONAL ENGINEER WHOSE SEAL APPEARS HEREON ASSUMES NO RESPONSIBILITY FOR ANY SUCH ALTERATION OR RE-USE WITHOUT HIS CONSENT.



**PROPOSED SITE PLAN (PARTIAL)**  
 SCALE : 1" = 20'-0"



**PROPOSED SITE PLAN RENDERING -BIRDSEYE**



**PROPOSED SITE PLAN RENDERING -STREET VIEW**

**HERNANE  
DE  
ALMEIDA**  
PROFESSIONAL  
ENGINEER  
26 GLENVUE DRIVE  
CARMEL, NY 10512  
914-469-9741  
HERNANE@ENGINEER.COM

CLIENT  
**RYAN MAIN, LLC**  
C/O  
FINKELSTEIN-MORGAN  
111 BROOK ST.  
SCARSDALE, NY 10583

PROJECT  
**PROPOSED  
CLUBHOUSE**

**MEADOWBROOK  
COMMONS  
TOWN OF  
CORTLANDT,  
NY 10567**

DATE: 8/23/2023

REVISIONS

DESCRIPTION

NO.

DATE

**PRESENTATION  
ILLUSTRATIONS**

SHEET TITLE

SEAL

IT IS A VIOLATION OF THE NEW YORK STATE EDUCATION LAW FOR ANY PERSON UNLESS ACTING UNDER THE DIRECTION OF A LICENSED PROFESSIONAL ENGINEER TO ALTER ANY ITEM ON THIS DRAWING AND/OR RELATED SPECIFICATION. ALL ALTERATIONS MUST BE MADE IN COMPLIANCE WITH THE NEW YORK STATE EDUCATION LAW. THE PROFESSIONAL ENGINEER WHOSE SEAL APPEARS HEREON ASSUMES NO RESPONSIBILITY FOR ANY SUCH ALTERATION OR RE-USE WITHOUT HIS CONSENT.

ALL CONDITIONS OF APPROVAL AS NOTED IN FORMAL LETTERS OF APPROVAL OR FINDINGS ARE A PART OF THE APPROVED SITE PLAN, SUBDIVISION OR VARIANCE PLATS, DRAWINGS OR PLANS, AND ARE HEREBY REFERENCED FOR ADDITIONAL APPROVAL DETAILS.

SHEET  
**P  
3.0**