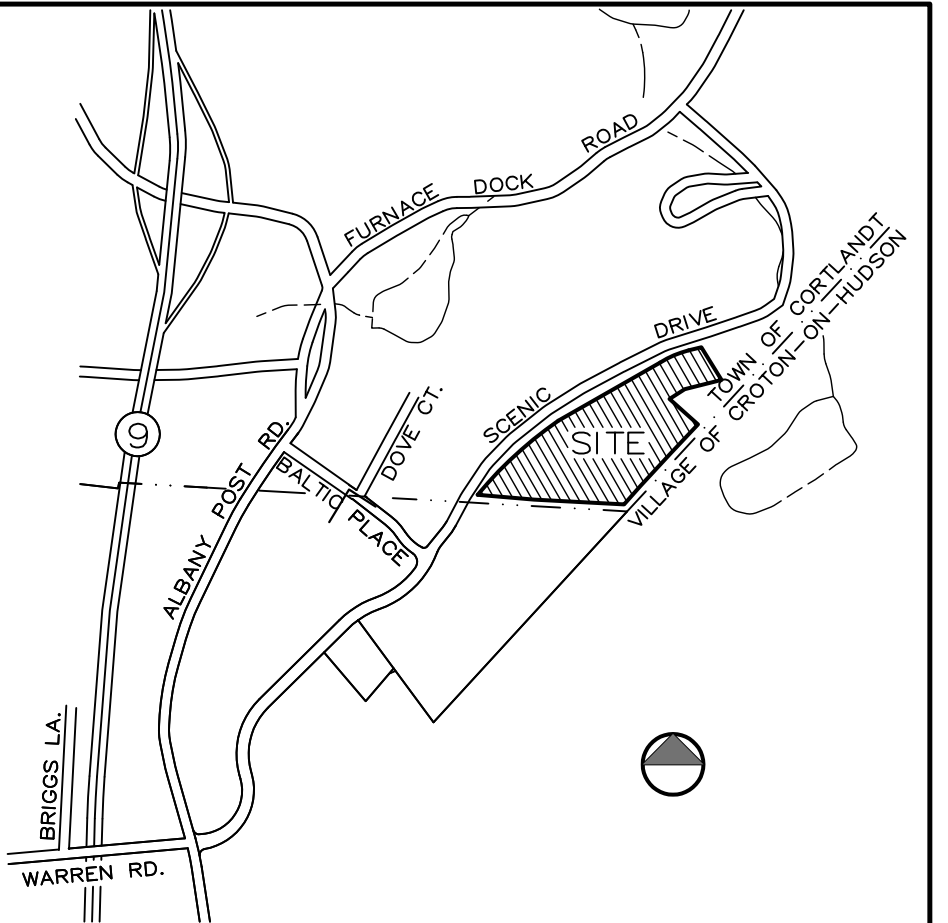
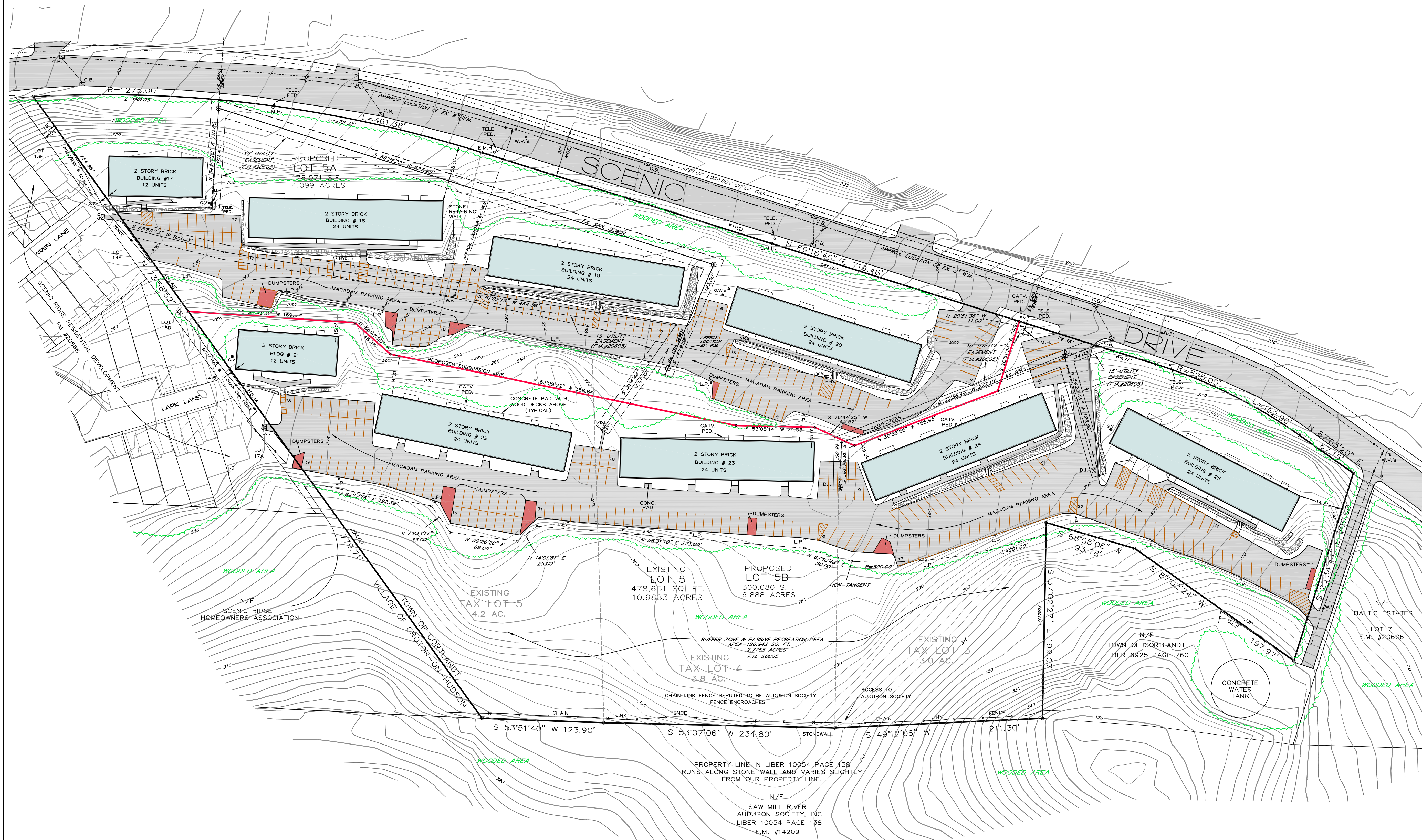
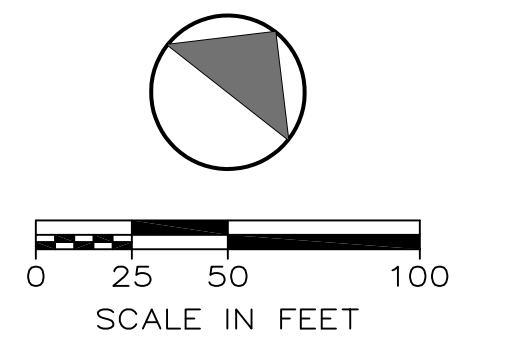


TAX MAP DESIGNATION:  
 SECTION 67.07 BLOCK 2 LOT 3  
 SECTION 67.07 BLOCK 2 LOT 4  
 SECTION 67.07 BLOCK 2 LOT 5  
 TITLE No. 231-W-23400



LOCATION MAP  
 N.T.S.



RALPH G. MASTROMONACO, P.E., P.C.  
 Consulting Engineers  
 13 Dove Court, Croton-on-Hudson, New York 10520  
 (914) 271-4762 (914) 271-2820 Fax

PRELIMINARY PLAT  
 FOR  
 NIDA ASSOCIATES, INC.  
 TOWN OF CORTLANDT  
 WESTCHESTER COUNTY, NY  
 MARCH 20, 2019  
 SHEET 1 OF 1 SHEETS

REFERENCE: BEING LOT 5 AS SHOWN ON A MAP ENTITLED "SUBDIVISION MAP BALTIC ESTATES, INC." FILED IN THE WESTCHESTER COUNTY CLERK'S OFFICE, DIVISION OF LAND RECORDS ON MAY 20, 1981 AS MAP NUMBER 20606.  
 UNAUTHORIZED ALTERATION OF THIS DOCUMENT, IN ANY WAY, CONSTITUTES A VIOLATION OF THE STATE OF NEW YORK EDUCATION LAW SECTION 7209 (2).