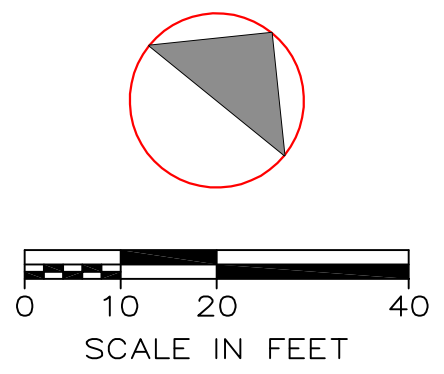


LOCATION MAP
N.T.S



ZONING SCHEDULE

PALISADES ENTERPRISES LLC	REQUIRED	PROVIDED
ZONE: HC HIGHWAY COMMERCIAL	HC ZONE	
23.20'-10, 11, 12 & 13		
MINIMUM LOT AREA (S.F.)	20,000 SF	73,573 SF
MINIMUM LOT WIDTH	100'	247'
MAXIMUM HEIGHT IN STORES	2 1/2'	2 1/2'
IN FEET	35'	35'
MINIMUM YARD DIMENSIONS		
FRONT	30'	30'
SIDE	30'	30'
REAR	30'	30'
MAXIMUM BUILDING COVERAGE	20%	4%
MINIMUM LANDSCAPE COVERAGE	30%	60%
BUFFER STRIP ABUTTING RESIDENTIAL DISTRICT	50'	50'
BUFFER STRIP ABUTTING STREET LINE	25'	25'
OFF-STREET PARKING SPACES (BASED ON USE)	Required	Provided
RETAIL STORE: 2,230 SF (HABITABLE)(1,900 SF)	8	11
OFFICE SPACE: 1,090 SF (HABITABLE)(1,400 SF)	3	3

NOTE: SITE IS NOT LOCATED IN FEMA FLOOD ZONE AS DEPICTED ON THE FEMA FIRM PANEL.

LEGEND

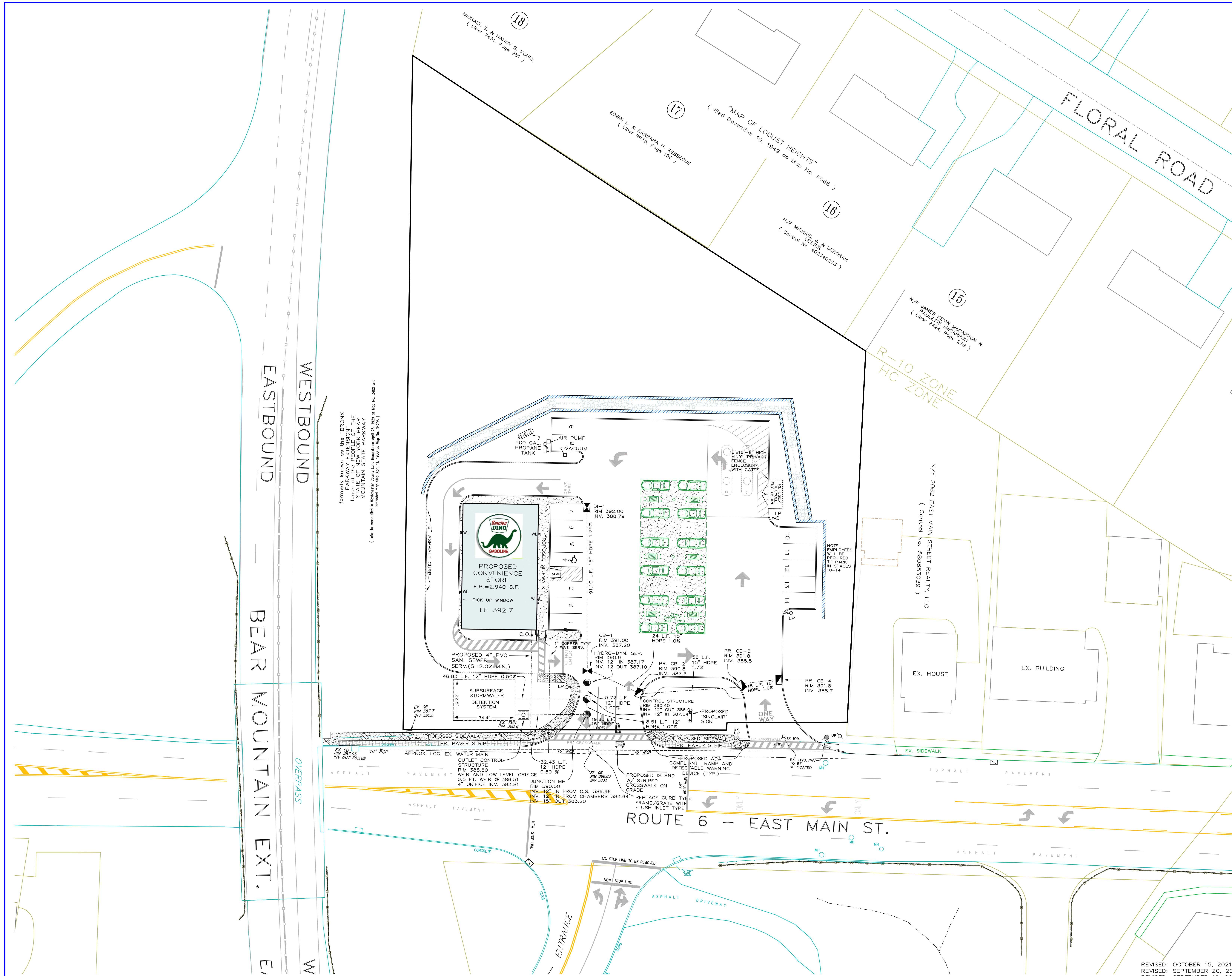
- | | | | |
|----------|----------|--|--|
| EXISTING | PROPOSED | | |
| | | | |
| | | | |
| | | | |
| | | | |
| | | | |

RALPH G. MASTROMONACO, PE, P.C.
Consulting Engineers
13 Dove Court, Croton-on-Hudson, New York 10520
(914) 271-4762 (914) 271-2820 Fax

GRADING/LAYOUT
PROPOSED
CONVENIENCE STORE
GAS STATION REHABILITATION
PREPARED FOR
PALISADES ENTERPRISES, LLC
ROUTE 6 - E. MAIN ST.
TOWN OF CORTLANDT
WESTCHESTER COUNTY, NY
MAY 6, 2020
SHEET 1 OF 8 SHEETS

REVISED: OCTOBER 15, 2021
REVISED: SEPTEMBER 21, 2021
REVISED: SEPTEMBER 20, 2021
REVISED: SEPTEMBER 10, 2021
REVISED: AUGUST 4, 2021
REVISED: JULY 28, 2021
REVISED: OCTOBER 15, 2020
REVISED: AUGUST 19, 2020
REVISED: JULY 23, 2020
REVISED: JUNE 17, 2020

Unauthorized alterations or additions to this drawing is a violation of Section 7209 (2) of the New York State Education Law.



formerly known as the "BRONX lands of the PEOPLE OF THE STATE OF NEW YORK BEAR MOUNTAIN STATE PARK" (refer to maps filed in Westchester County Land Office, File No. 1000, as Map No. 34,023, as amended map filed April 11, 1930 as Map No. 34,023)

LEGEND

EXISTING	PROPOSED	DESCRIPTION
		CATCH BASIN
		DRAIN MANHOLE
		SAN. SEWER MANHOLE
		HYDRANT
		DRAIN INLET
		WATER VALVE
		UTILITY POLE
		LIGHT POLE
		TREE
		CONTOUR LINE

RALPH G. MASTROMONACO, PE, P.C.
 Consulting Engineers
 13 Dove Court, Croton-on-Hudson, New York 10520
 (914) 271-4762 (914) 271-2820 Fax

UTILITY PLAN
 PROPOSED
 CONVENIENCE STORE
 GAS STATION REHABILITATION
 PREPARED FOR
 PALISADES ENTERPRISES, LLC
 ROUTE 6 - E. MAIN ST.
 TOWN OF CORTLANDT
 WESTCHESTER COUNTY, NY
 MAY 6, 2020
 SHEET 2 OF 8 SHEETS

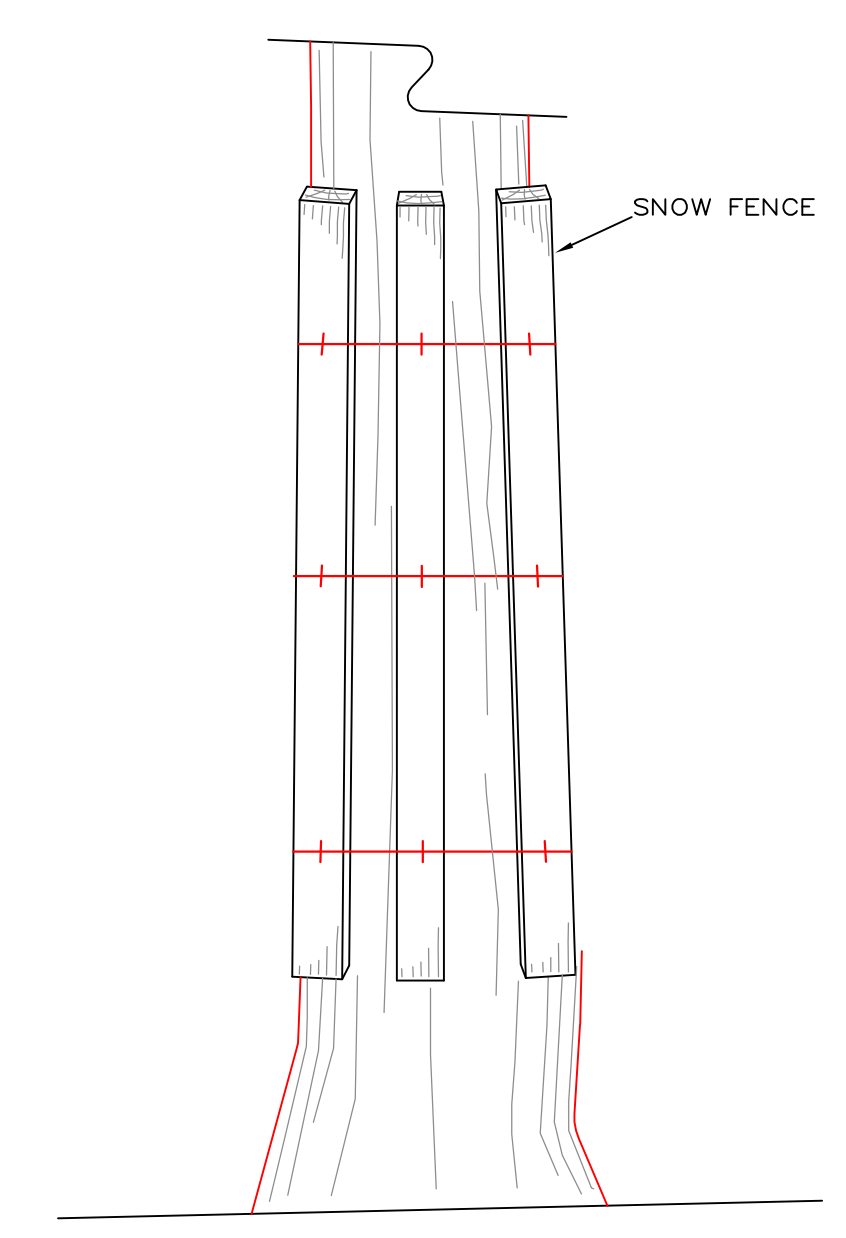
REVISED: OCTOBER 15, 2021
 REVISED: SEPTEMBER 20, 2021
 REVISED: SEPTEMBER 10, 2021
 REVISED: AUGUST 4, 2021
 REVISED: JULY 28, 2021
 REVISED: OCTOBER 15, 2020
 REVISED: AUGUST 19, 2020

Unauthorized alterations or additions to this drawing is a violation of Section 7209 (2) of the New York State Education Law.

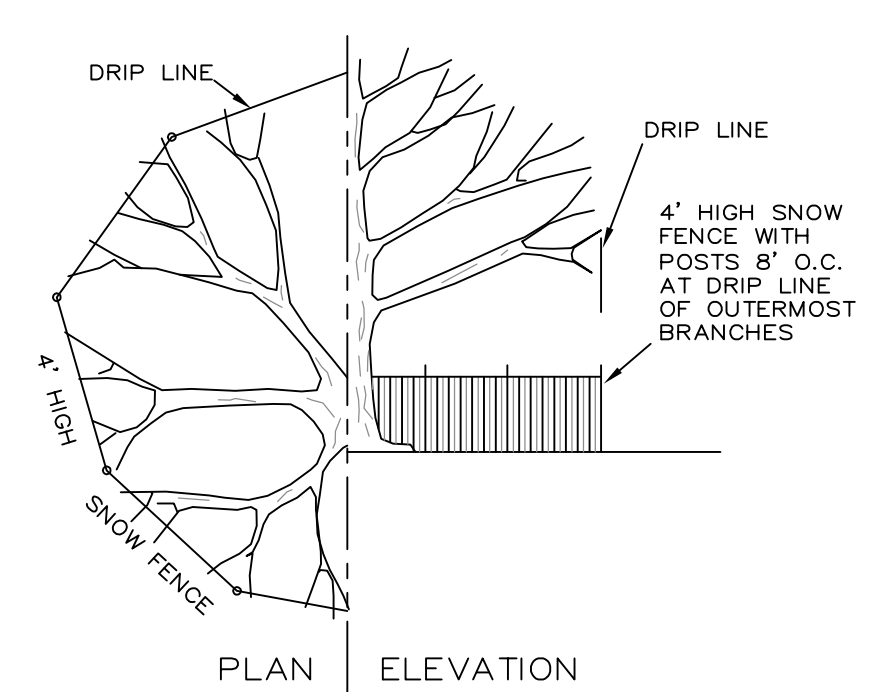


TREE PROTECTION NOTES:

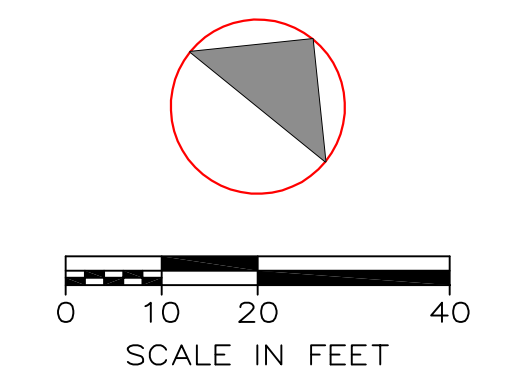
1. Prior to commencement of any grading, construction or tree removal, a tree protection area for any tree located within 25 feet of any proposed grading, construction or tree removal, or within the tree's critical root zone, whichever is greater, must be established by physical barriers and maintained until such work is completed.
2. Active tree protection shall consist of chain-link, orange laminated plastic, wooden post and rail fencing or other equivalent restraining material placed at the edge of the critical root zone. If addition to fencing, where tree trunks are in jeopardy of being damaged by equipment, the administrator shall require boards of two inches by four inches to be strapped around the trunk of the trees. In addition, where active tree protection is required, each tree to be saved shall be marked at the base of the trunk with blue-colored water-based paint.



TO BE USED NEAR CONSTRUCTION ACTIVITIES WHERE DRIPLINE PROTECTION WOULD IMPEDE CONSTRUCTION ACTIVITIES.
TRUNK ARMOR DETAIL FOR TREE PROTECTION
 N.T.S.



TREE PROTECTION DETAIL
 N.T.S.



LEGEND

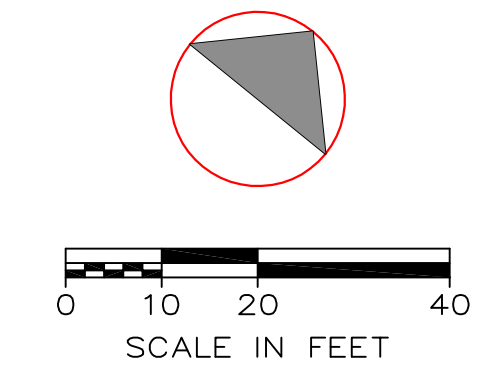
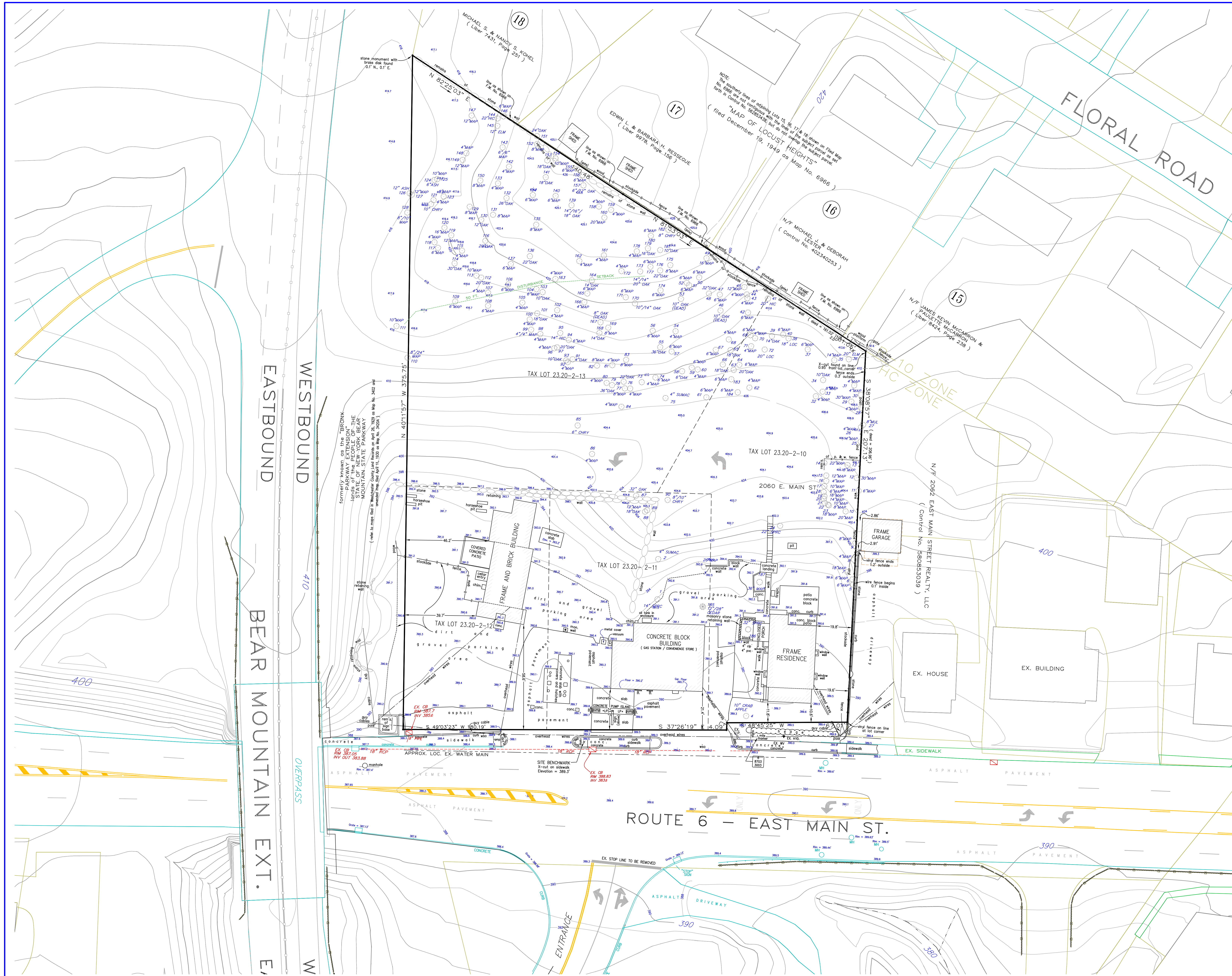
EXISTING	PROPOSED	
		CATCH BASIN
		DRAIN MANHOLE
		SAN. SEWER MANHOLE
		HYDRANT
		DRAIN INLET
		WATER VALVE
		UTILITY POLE
		LIGHT POLE
		CONTOUR LINE
		TREE
		TREE TO BE REMOVED

RALPH G. MASTROMONACO, PE, P.C.
 Consulting Engineers
 13 Dove Court, Croton-on-Hudson, New York 10520
 (914) 271-4762 (914) 271-2820 Fax

TREE PLAN
PROPOSED
CONVENIENCE STORE
GAS STATION REHABILITATION
 PREPARED FOR
 PALISADES ENTERPRISES, LLC
 ROUTE 6 - E. MAIN ST.
 TOWN OF CORTLANDT
 WESTCHESTER COUNTY, NY
 MAY 6, 2020
 SHEET 3 OF 8 SHEETS

REVISED: OCTOBER 15, 2021
 REVISED: SEPTEMBER 21, 2021
 REVISED: SEPTEMBER 20, 2021
 REVISED: SEPTEMBER 10, 2021
 REVISED: AUGUST 4, 2021
 REVISED: JULY 28, 2021
 REVISED: OCTOBER 15, 2020
 REVISED: AUGUST 19, 2020
 REVISED: JUNE 17, 2020

Unauthorized alterations or additions to this drawing is a violation of Section 7209 (2) of the New York State Education Law.



LEGEND

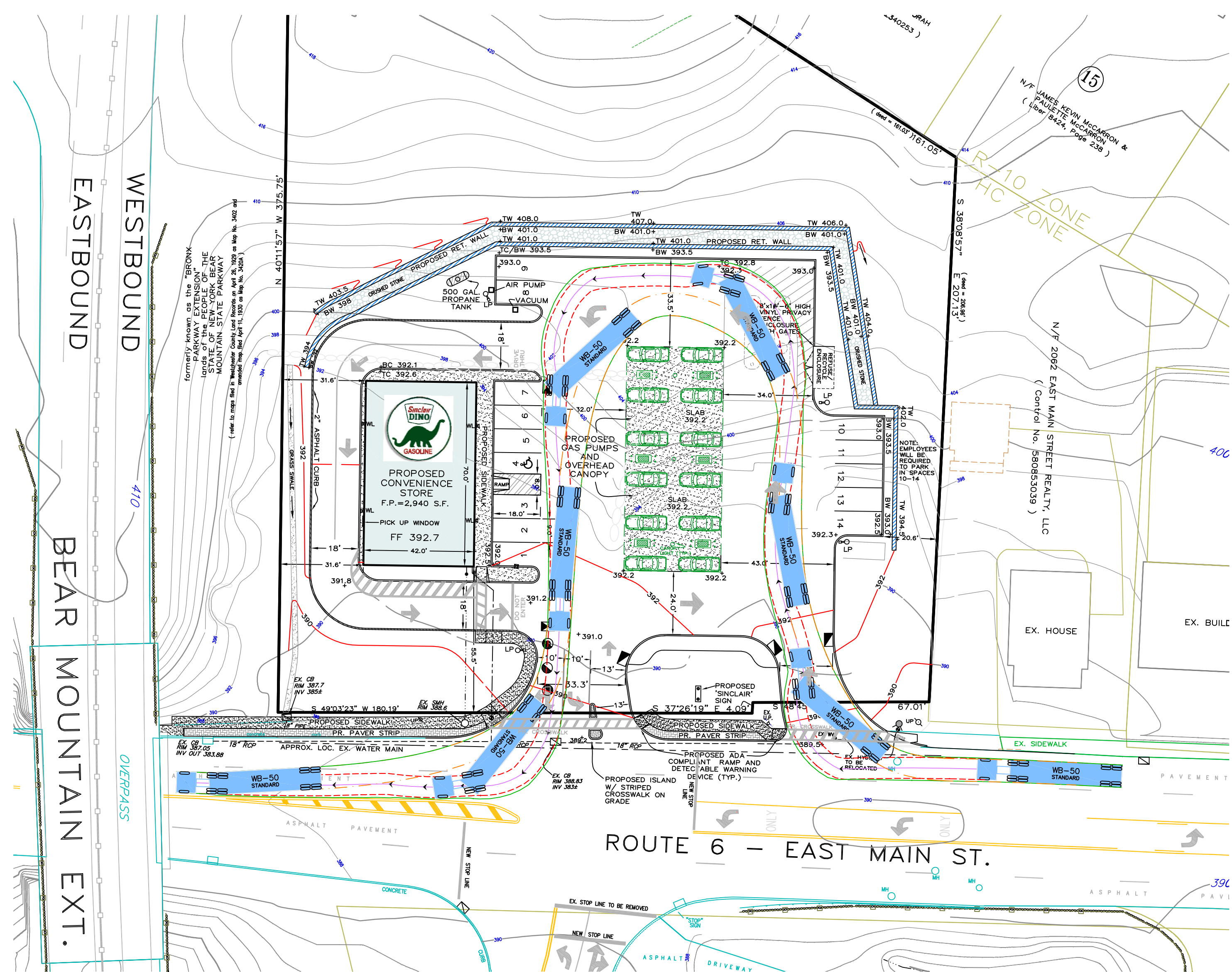
EXISTING	PROPOSED	DESCRIPTION
		CATCH BASIN
		DRAIN MANHOLE
		SAN SEWER MANHOLE
		HYDRANT
		WATER INLET
		UTILITY POLE
		LIGHT POLE
		TREE
		CONTOUR LINE

RALPH G. MASTROMONACO, PE, P.C.
Consulting Engineers
13 Dove Court, Croton-on-Hudson, New York 10520
(914) 271-4762 (914) 271-2820 Fax

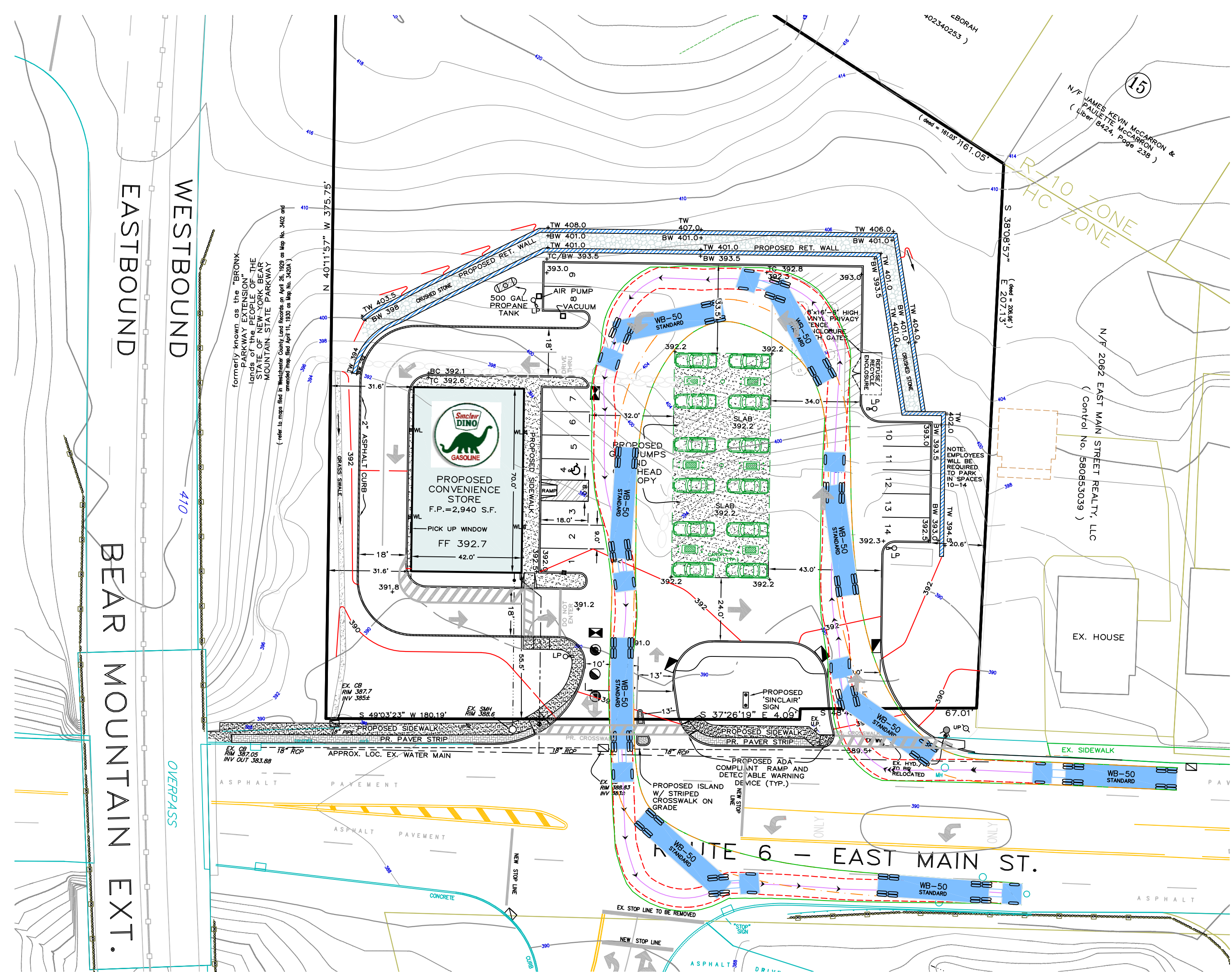
EXISTING CONDITIONS
PROPOSED
CONVENIENCE STORE
GAS STATION REHABILITATION
PREPARED FOR
PALISADES ENTERPRISES, LLC
ROUTE 6 - E. MAIN ST.
TOWN OF CORTLANDT
WESTCHESTER COUNTY, NY
MAY 6, 2020
SHEET 4 OF 8 SHEETS

REVISED: AUGUST 4, 2021
REVISED: JULY 28, 2021
REVISED: OCTOBER 15, 2020
REVISED: JUNE 17, 2020

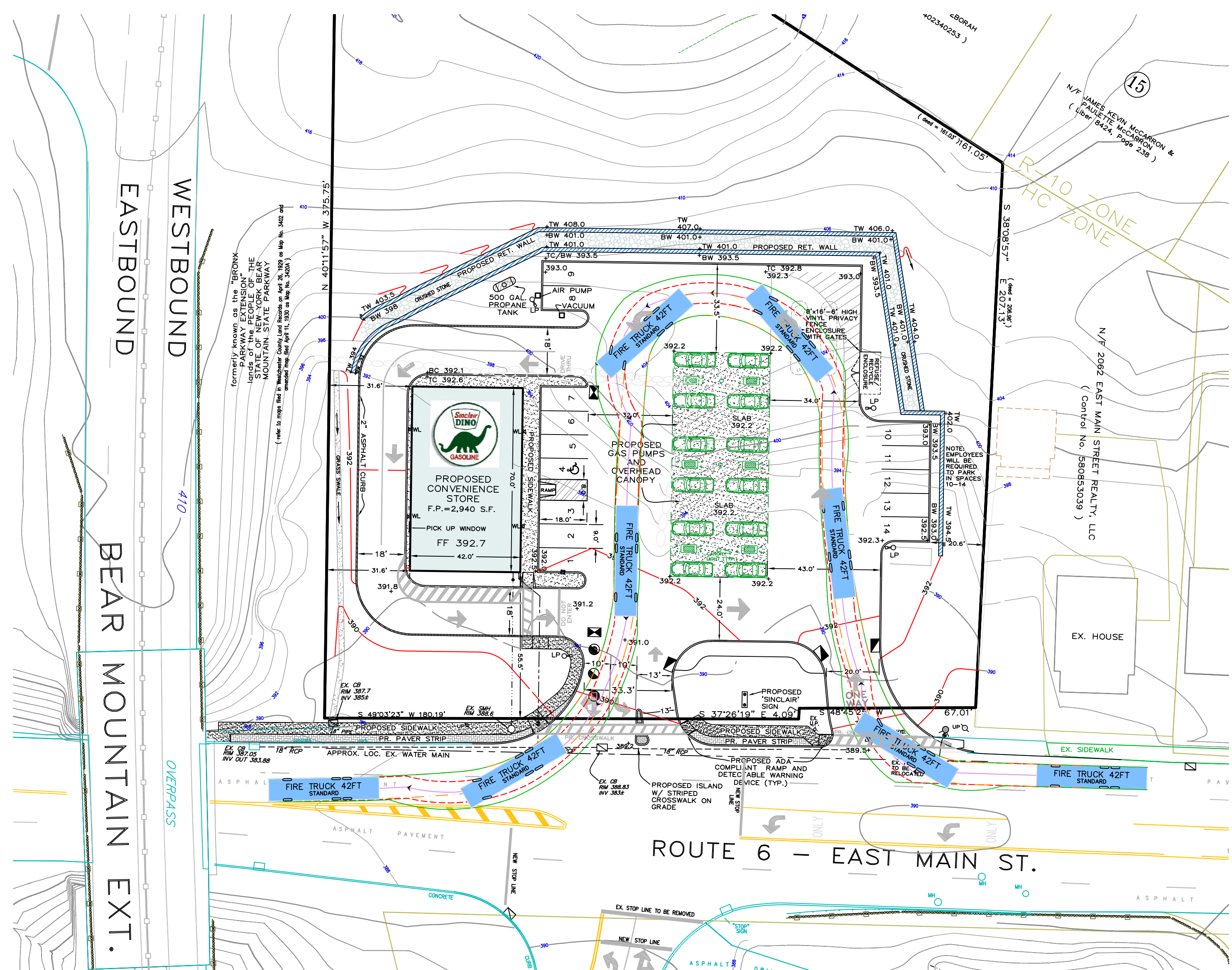
Unauthorized alterations or additions to this drawing is a violation of Section 7209 (2) of the New York State Education Law.



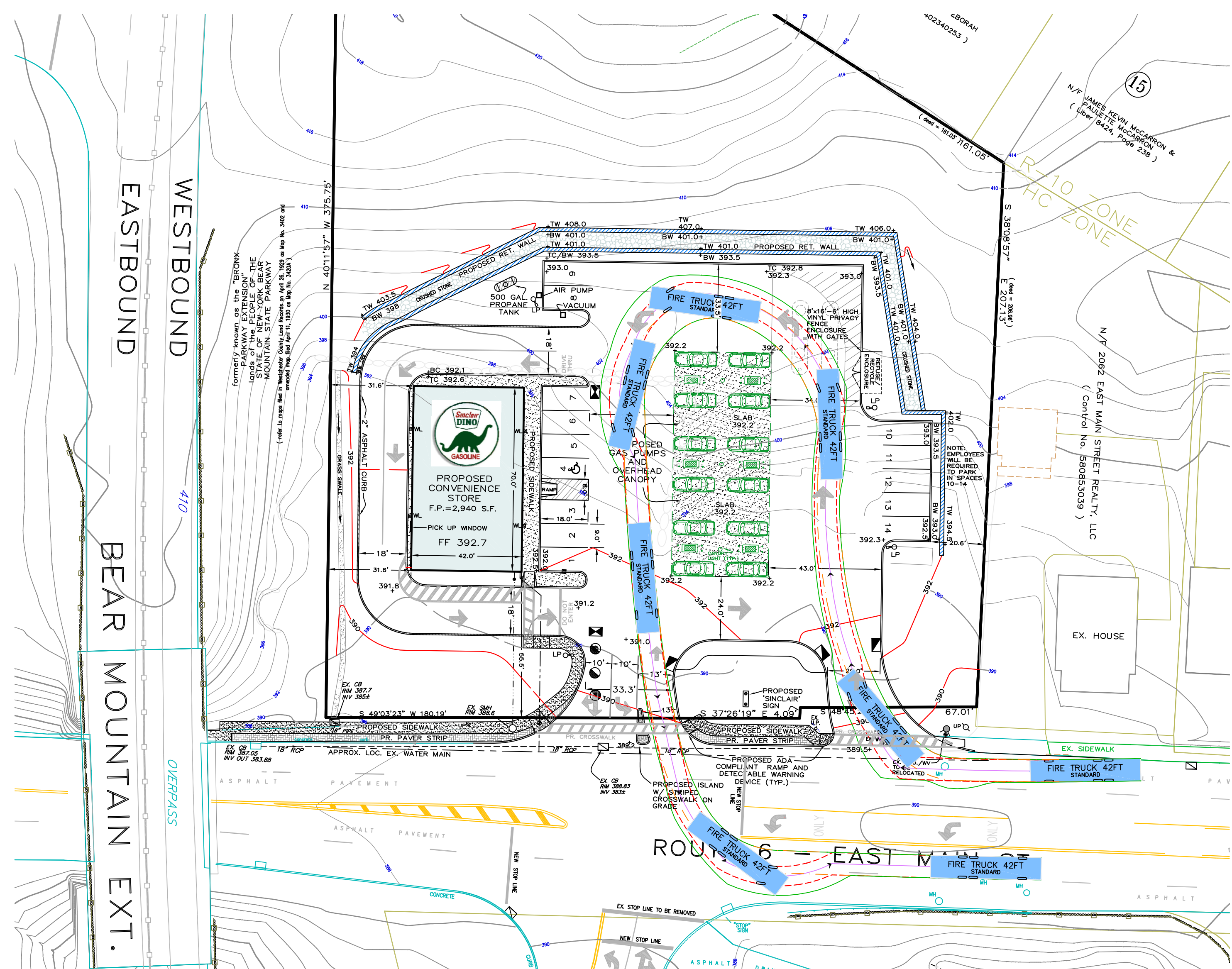
WB-50 TRUCK TURN
WESTBOUND APPROACH
WESTBOUND EXIT



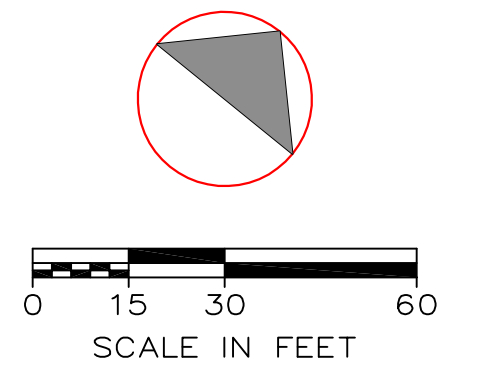
WB-50 TRUCK TURN
WESTBOUND APPROACH
EASTBOUND EXIT



FIRE TRUCK TURN
WESTBOUND APPROACH
WESTBOUND EXIT



FIRE TRUCK TURN
WESTBOUND APPROACH
EASTBOUND EXIT



LEGEND

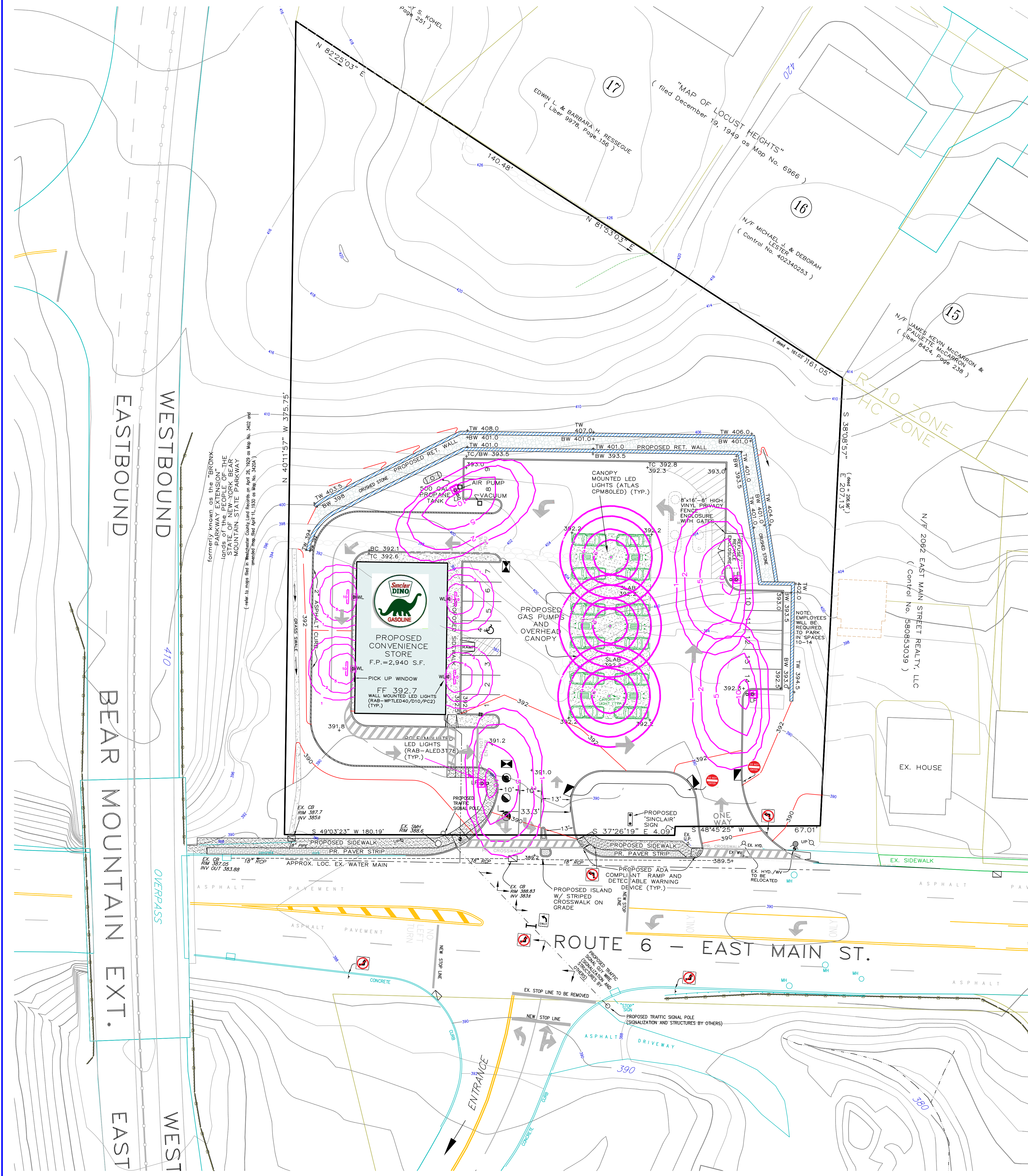
EXISTING	PROPOSED	
		CATCH BASIN
		DRAIN MANHOLE
		SAN. SEWER MANHOLE
		HYDRANT
		DRAIN INLET
		WATER VALVE
		UTILITY POLE
		LIGHT POLE
		TREE
		CONTOUR LINE

RALPH G. MASTROMONACO, PE, P.C.
Consulting Engineers
13 Dove Court, Croton-on-Hudson, New York 10520
(914) 271-4762 (914) 271-2820 Fax

TRUCK MANEUVERS
PROPOSED
CONVENIENCE STORE
GAS STATION REHABILITATION
PREPARED FOR
PALISADES ENTERPRISES, LLC
ROUTE 6 - E. MAIN ST.
TOWN OF CORTLANDT
WESTCHESTER COUNTY, NY
JULY 21, 2020

REVISED: OCTOBER 15, 2021
REVISED: SEPTEMBER 20, 2021
REVISED: SEPTEMBER 10, 2021
REVISED: SEPTEMBER 7, 2021
REVISED: AUGUST 4, 2021
REVISED: JULY 28, 2021
REVISED: OCTOBER 15, 2020

SHEET 5 OF 8 SHEETS



Atlas Canopy Light

CPMBLED 40 Watt LED Low Profile Canopy Light

Project Information
 Feature Type: 40 Watt LED Low Profile Canopy Light
 Catalog Number: CPMBLED
 Approved by: [Logos]

Specification	CPMBLED 40	CPMBLED 40	CPMBLED 40	CPMBLED 40
Lumens	4000	4000	4000	4000
Watts	79.58	79.58	79.58	81.09
Lumens/Watt	121.76	121.76	121.76	121.11
CRF	83.3	83.3	83.3	83.3
CCT	3150	4000	4500	5000K
DLC Prod. ID	PL99215	P288242	P2121100	P2121100

Construction: Designed for commercial and industrial applications, providing rugged operating temperatures, brighter light and longer LED life. Apertures for continuous wiring. Housing is hinged for quick and easy mounting and entrance.

Zero Glare: Using the latest high brightness, high LED count technology, more visible light output is produced while eliminating glare. The high brightness lens, with 95% efficiency, is high impact scratch resistant and protects the LEDs. At the same time, it delivers improved visual comfort by eliminating glare and providing a wider smoother and more uniform light output.

Thermal Management: The Atlas Low Profile Canopy Light is designed as a complete system to optimize LED life and light output. The Patent Pending Thermal Stacking heat removal technology extracts heat from within the housing mounting to lower the LED junction temperature. The lower temperature results in longer LED life (30,000+ hrs) and component life, and also allows for higher light output.

Lighting: DLC Listed (5000K or optional CCT only).
 Design Light: Consortium Premium qualified luminaire, eligible for rebates from DLC member utilities.

AC Input: 120/240/277V

Driver: Constant Current, Class 2 120-277 VAC, 47-63Hz
 High Efficiency - min. 85%
 10' Cable Power 3 Watts
 Dimming 0-10V

LEDs: 5000K | 5000K | 4500K | 5000K CCT
 "Epoxy Guard" protective conformal coated boards.
 Atlas LEDs provide higher lumen output, greater energy efficiency and more reliable fixture performance. They are tested and bin sorted at 70000 hours which is the actual operating current used in Atlas LED luminaires, giving a better representation of actual performance.

Temperatures: Min Start: -35°C Max: 50°C

Warranty: Five year limited warranty

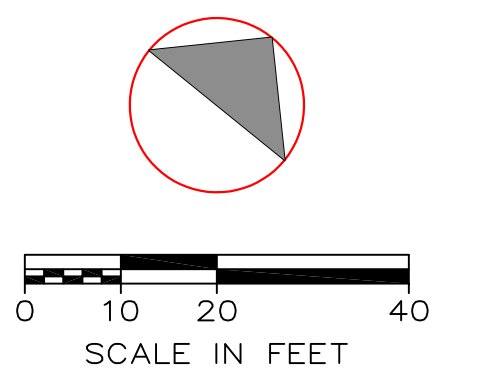
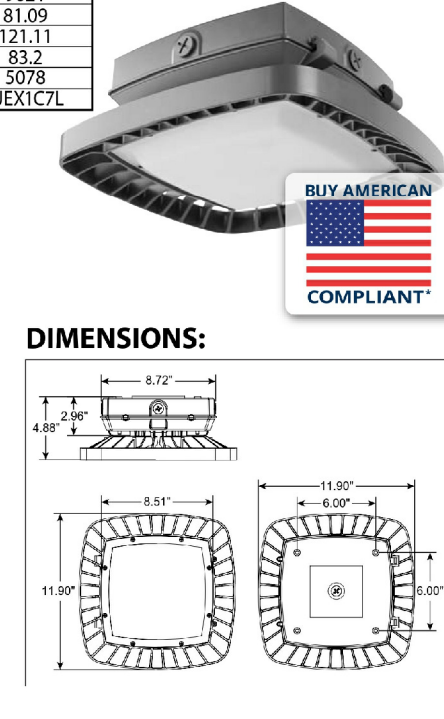
Testing: Atlas LED luminaires have been tested by an independent laboratory in accordance with IESNA LM-79 & LM-80.

400 Watt: for 400 watt suffix 4 to part number.

Weight: 10.0 lbs.

Related and incentives are available in many areas. Contact an Atlas Representative for more information.

ATLAS LIGHTING PRODUCTS, INC.
 10000 South Blvd., Suite 100, Dallas, TX 75246
 800-848-4445 | FAX: 972-848-2294 | www.atlasled.com



CANOPY MOUNTED LIGHT N.T.S.

ALED3T78

Specifications:
 Specification grade area light available with IES Type III distribution. For use for parking, general parking, and other applications where large area of lighting is required. Patent pending thermal management system. 5 Year Warranty.
 Color: Bronze Weight: 30.4 lbs

Type	Constant Current	Watts	Temp
LED	0.2024	4000	3000K
200V	0.2174	71 CRF	3000K
240V	0.176A	1.7% Efficiency	10000K
277V	0.147A	Lumens	8511
Input Watts	27W	Efficiency	121 LPM
Efficiency	N/A		

Technical Specifications

Optical: Lifespan: 100,000-hour LED lifespan based on IES LM-80 results and TM-21 calculations.
 Beam Spread: 81° x 62°
 Replacement: Replaces 250W incandescent.

LED Characteristics: LEDs: Six (6) multi-chip, 100% high output, long-life LEDs.
 Color Consistency: 3-step Macadam Ellipse ensuring to achieve consistent beam-to-beam color.
 Color Stability: LED color temperature is warranted to drift no more than 200K CCT over a 5 year period.
 Color Uniformity: 1400 range CCT (Consistent Color Temperature) allows the uniformity of the American National Standards Institute for the Consistency of Solid State Lighting (ANSI C78-371, 2015).

Electrical: Driver: Constant Current, Class 2, 2000mA, 100-277V, 50/60Hz, 1.1A, Power Factor 99%
 THD: 3.5% at 120V, 13.5% at 277V
 Surge Protection: IEC
 Input: 120V

POLE MOUNTED LIGHT N.T.S.

WPTLED40/D10/PC2

Specifications:
 High performance LED light fixture. Covers footprint of most 40W T-8 fixtures. Versatile, resistant to theft. Precision die-cast aluminum. 6-10V dimmable driver with 120-277V protocol.
 Color: Bronze Weight: 6.5 lbs

Type	Constant Current	Watts	Temp
LED	0.2024	4000	3000K
200V	0.2024	75 CRF	3000K
240V	0.176A	1.7% Efficiency	10000K
277V	0.147A	Lumens	4021
Input Watts	30W	Efficiency	100 LPM
Efficiency	N/A		

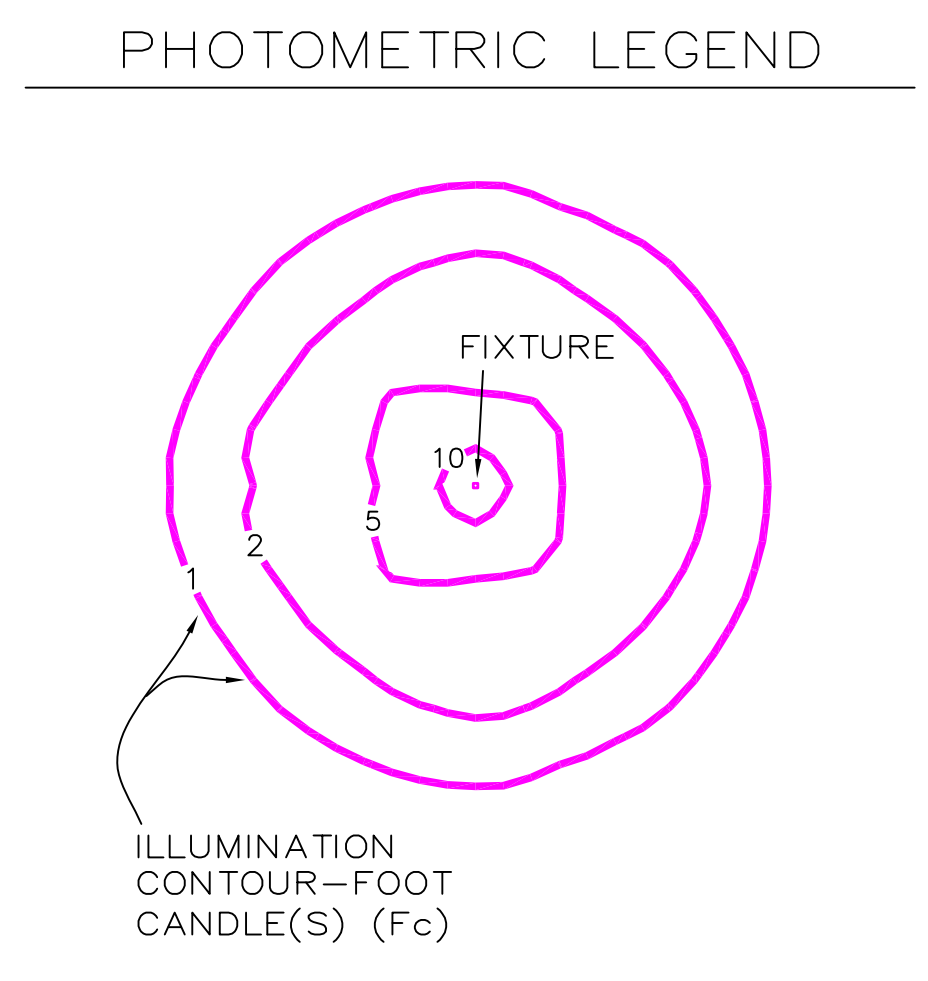
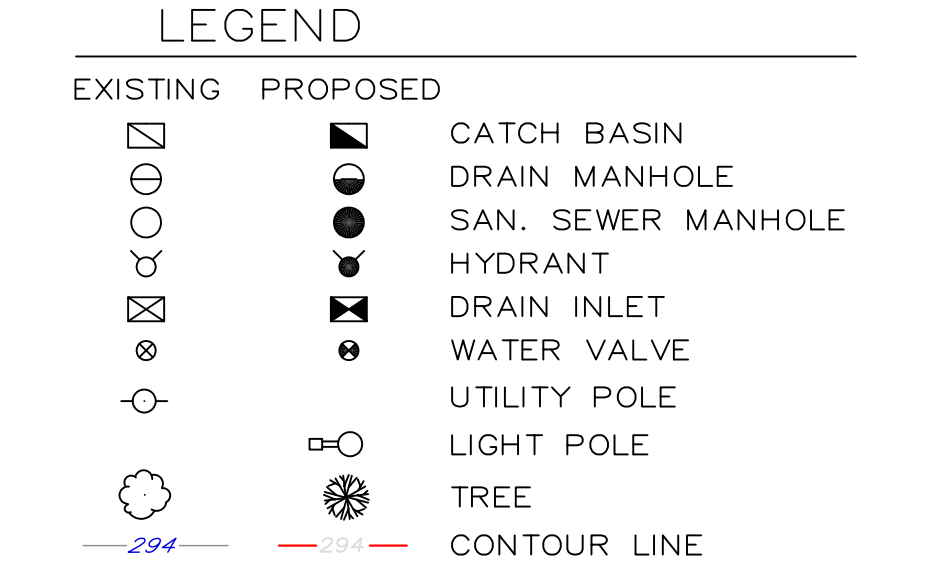
Technical Specifications

UL Listing: Suitable for use in 100° F (40° C) ambient temperature.
 IESNA LM-79 & LM-80 Testing: RAB LED luminaires have been tested by an independent laboratory in accordance with IESNA LM-79 and LM-80 and have been reported the Department of Energy "Lighting Facts" label.

LED Characteristics: LEDs: Long life, high efficiency outdoor mounting LEDs.
 Color Stability: LED color temperature is warranted to drift no more than 200K CCT over a 5 year period.
 Color Uniformity: RAB's range of CCT (Consistent Color Temperature) allows the uniformity of the American National Standards Institute for the Consistency of Solid State Lighting (ANSI C78-371, 2015).

Drivers: Constant Current, Class 2, 500mA, 100-277V, 50/60Hz, 1.02A, 30W, 1.02A, 277V, 0.147A, Surge Protection: 50V

Power Factor: 96.5% at 120V, 93.2% at 277V
 THD: 11.9% at 120V, 14.2% at 277V



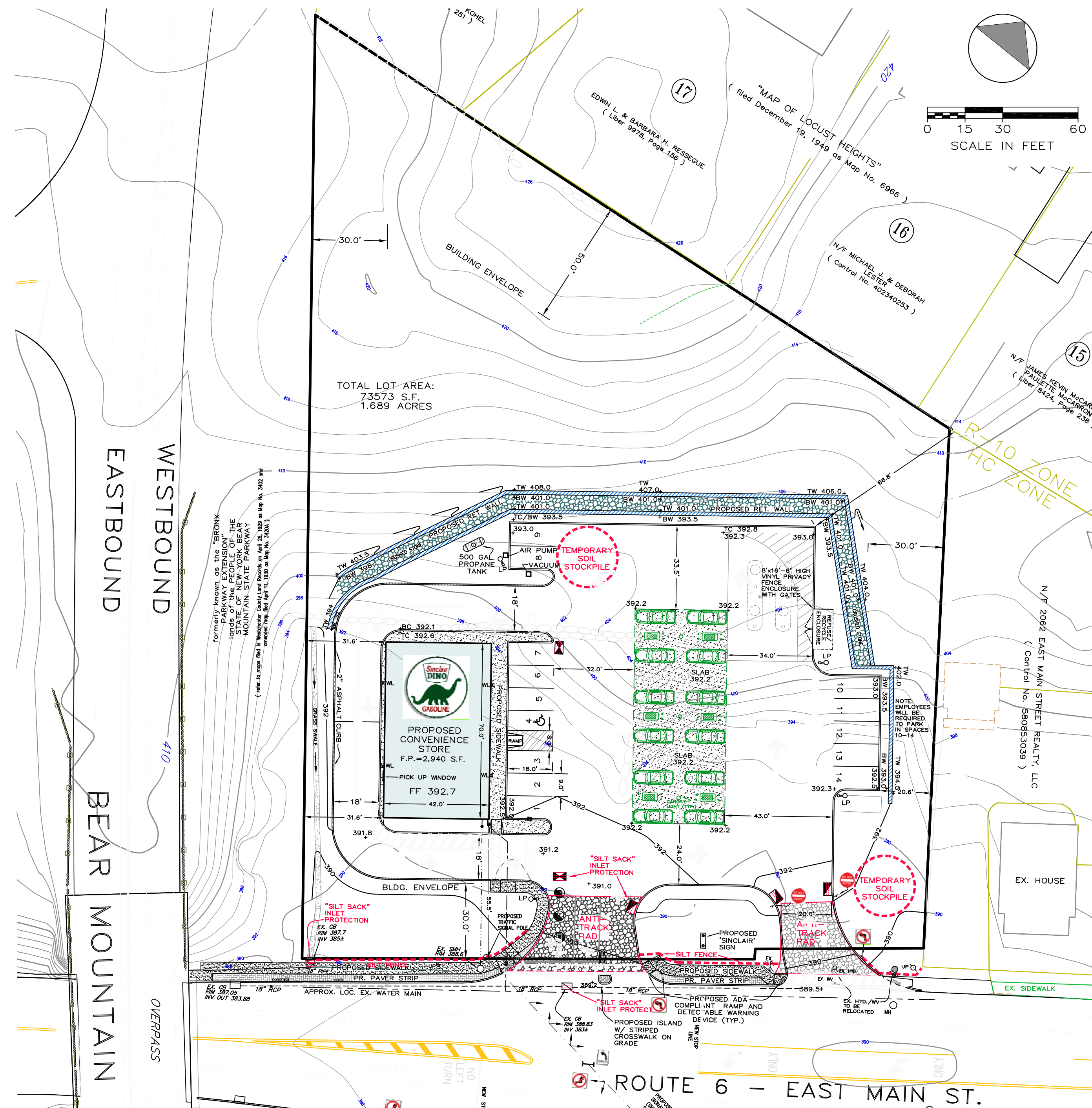
RALPH G. MASTROMONACO, PE, P.C.
 Consulting Engineers
 13 Dove Court, Croton-on-Hudson, New York 10520
 (914) 271-4762 (914) 271-2820 Fax

PHOTOMETRIC PLAN
 PROPOSED
 CONVENIENCE STORE
 GAS STATION REHABILITATION
 PREPARED FOR
 PALISADES ENTERPRISES, LLC
 ROUTE 6 - E. MAIN ST.
 TOWN OF CORTLANDT
 WESTCHESTER COUNTY, NY
 AUGUST 19, 2020
 SHEET 6 OF 8 SHEETS

WALL MOUNTED LIGHT N.T.S.

REVISIONS:
 OCTOBER 15, 2021
 SEPTEMBER 20, 2021
 SEPTEMBER 10, 2021
 AUGUST 4, 2021
 JULY 28, 2021
 OCTOBER 15, 2020

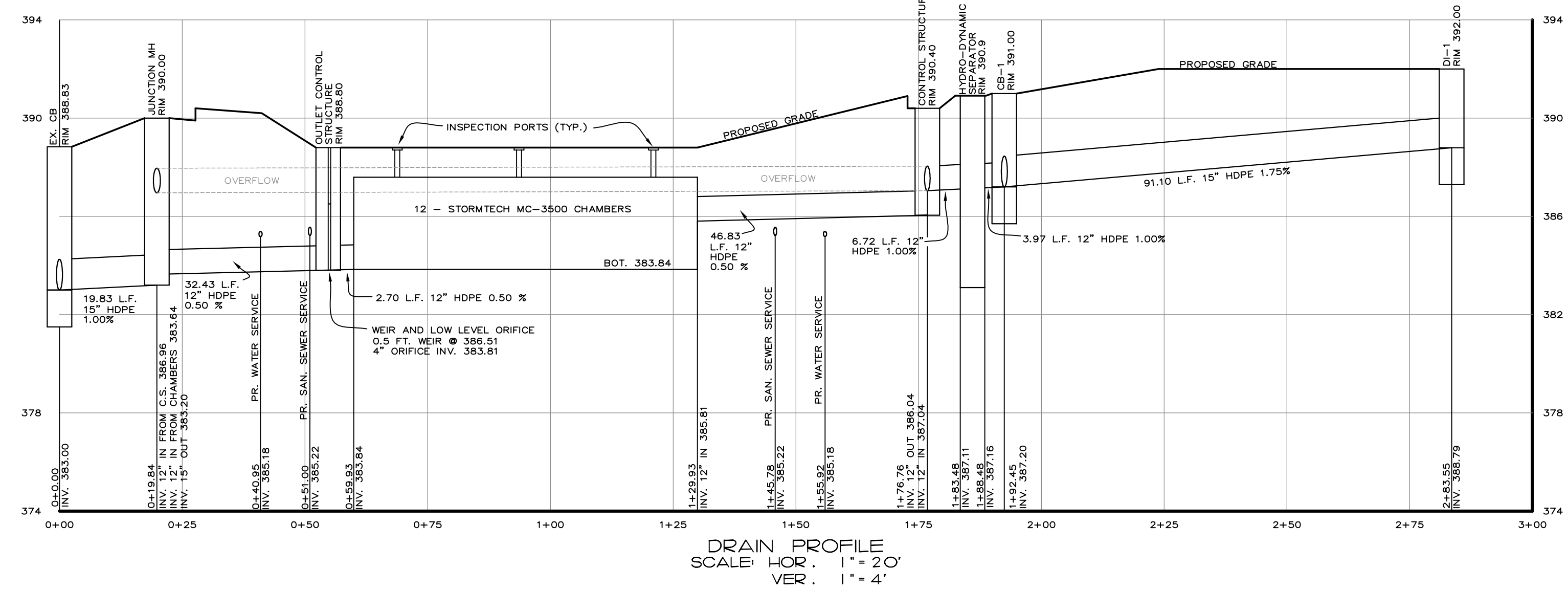
Unauthorized alterations or additions to this drawing is a violation of Section 7209 (2) of the New York State Education Law.



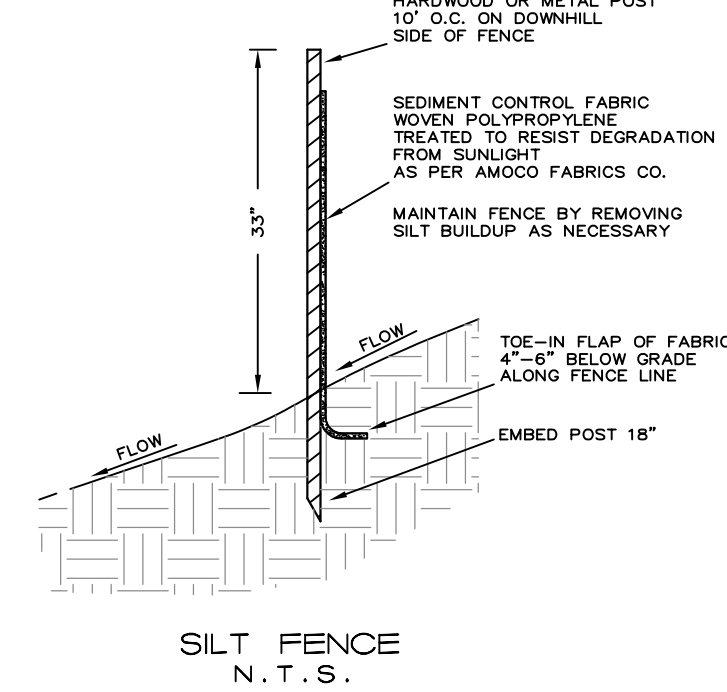
TOTAL LOT AREA:
7,307.3 S.F.
1.689 ACRES

EROSION CONTROL PLAN

Unauthorized alterations or additions to this drawing is a violation of Section 7209 (2) of the New York State Education Law.



- Siltsack is a temporary catch basin filter that removes sediment, trash and debris from entering a catch basin.
- To install Siltsack in the catch basin, remove the grate and place the sack in the opening. Hold approximately six inches of the sack outside the frame. This is the area of the lifting straps. Replace the grate to hold the sack in place.
 - When the restraint cord is no longer visible, Siltsack is full and should be emptied.
 - To remove Siltsack, take two pieces of 1" diameter rebar and place through the lifting loops on each side of the sack to facilitate the lifting of Siltsack.
 - To empty Siltsack, place unit where the contents will be collected. Place the rebar through the lift straps (connected to the bottom of the sack) and lift. This will lift Siltsack from the bottom and empty the contents. Clean out and rinse. Return Siltsack to its original shape and place back in the basin.
 - Siltsack is reusable. Once the construction cycle is complete, remove Siltsack from the basin and clean.

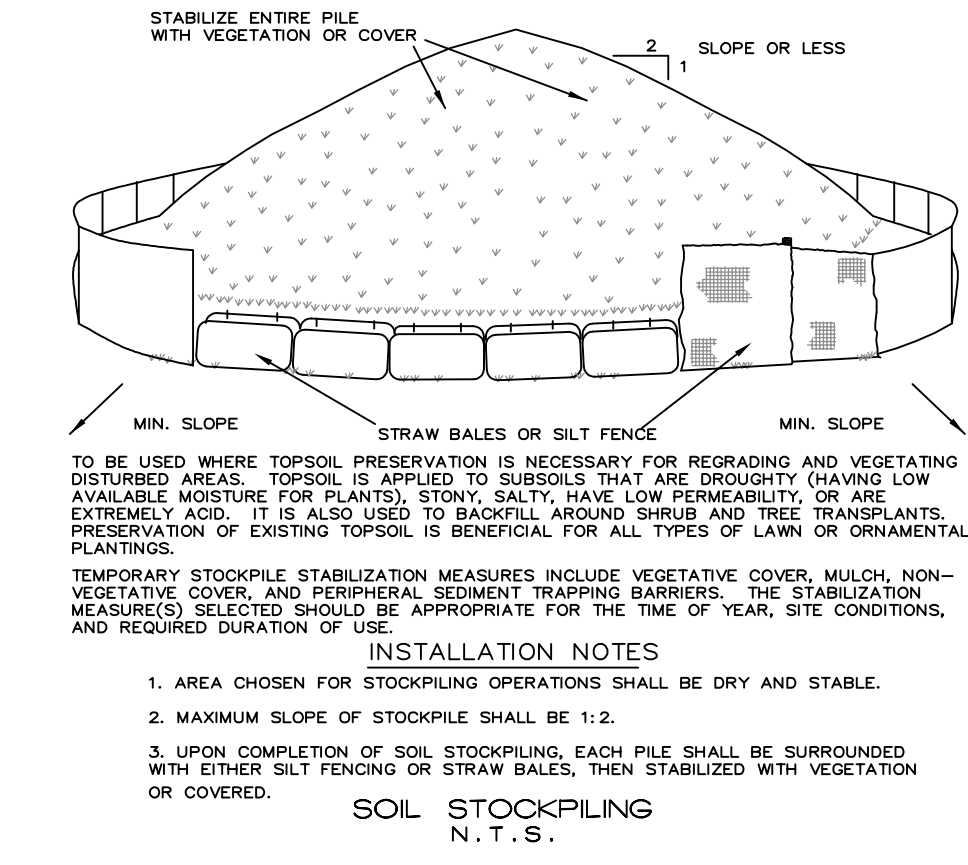
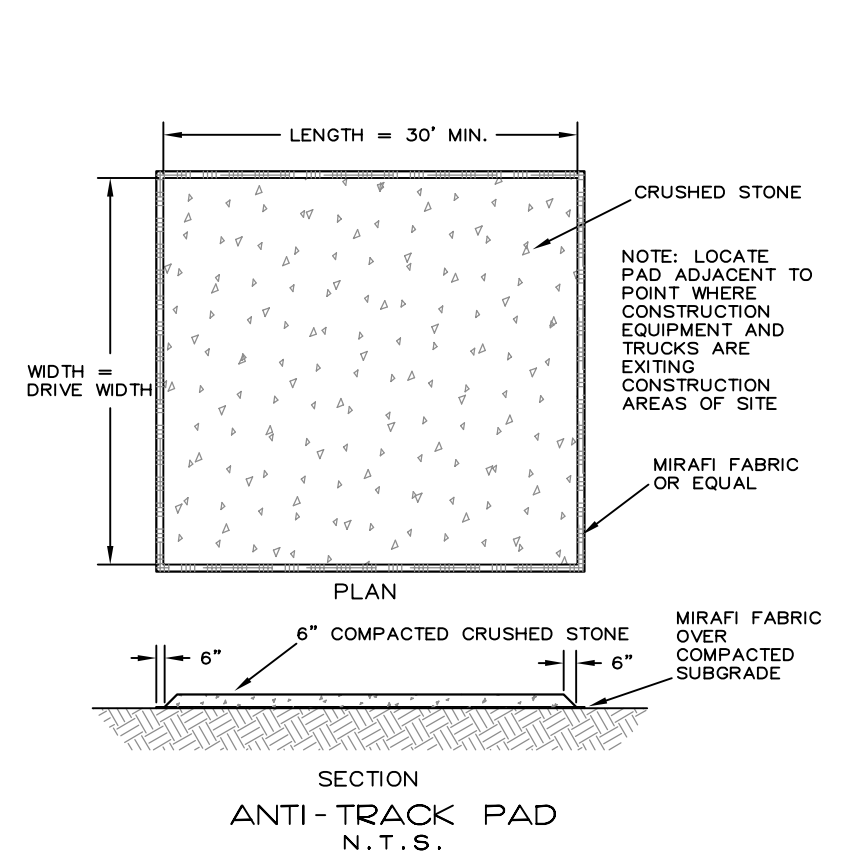
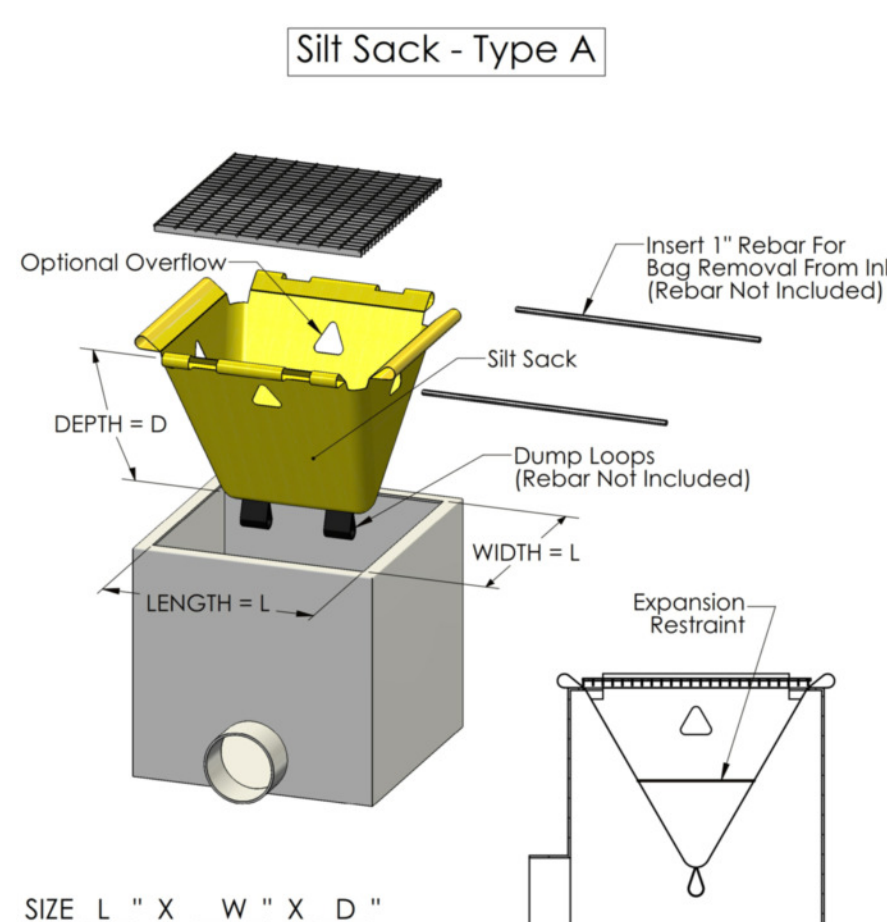


NOTE: CONTRACTOR SHALL MAINTAIN EROSION AND SEDIMENTATION CONTROL MEASURES ON THE FOLLOWING SCHEDULE:

	MONTHLY	MONTHLY	MONTHLY	AFTER RAINFALL	AFTER RAINFALL
HAYBALE/SILT FENCE	IN	IN	IN	IN	IN
SEDIMENT BARRIER	IN	IN	IN	IN	IN
INLET PROTECTION DEVICE	IN	IN	IN	IN	IN

IN=INSPECT REPL=REPLACE CLN=CLEAN OUT REM=REMOVE

EROSION CONTROL MAINTENANCE SCHEDULE



"SILT SACK" SEDIMENT CAPTURE DEVICE FOR EXISTING DRAIN INLETS
N.T.S.

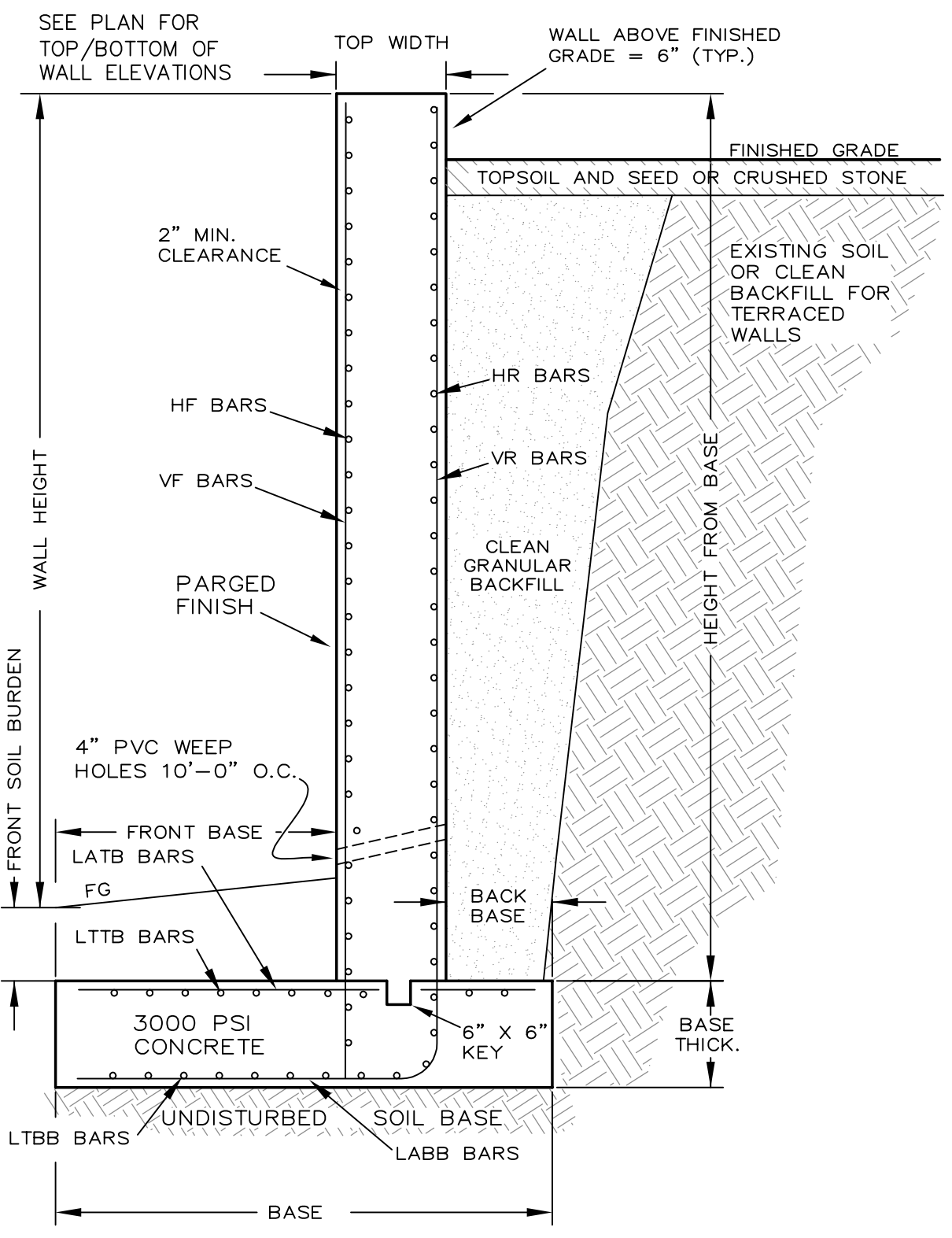
INSTALLATION NOTES

- AREA CHOSEN FOR STOCKPILING OPERATIONS SHALL BE DRY AND STABLE.
- MAXIMUM SLOPE OF STOCKPILE SHALL BE 1:2.
- UPON COMPLETION OF SOIL STOCKPILING, EACH FILE SHALL BE SURROUNDED WITH EITHER SILT FENCE OR STRAW BALES, THEN STABILIZED WITH VEGETATION OR COVERED.

RALPH G. MASTROMONACO, PE, P.C.
Consulting Engineers
13 Dove Court, Croton-on-Hudson, New York 10520
(914) 271-4762 (914) 271-2820 Fax

DRAIN PROFILE/
EROSION CONTROL PLAN
PROPOSED
CONVENIENCE STORE
GAS STATION REHABILITATION
PREPARED FOR
PALISADES ENTERPRISES, LLC
ROUTE 6 - E. MAIN ST.
TOWN OF CORTLANDT
WESTCHESTER COUNTY, NY
APRIL 22, 2020
SHEET 7 OF 8 SHEETS

REVISED: OCTOBER 15, 2021
REVISED: SEPTEMBER 20, 2021
REVISED: SEPTEMBER 10, 2021
REVISED: AUGUST 4, 2021
REVISED: JULY 28, 2021
REVISED: OCTOBER 15, 2020
REVISED: AUGUST 19, 2020



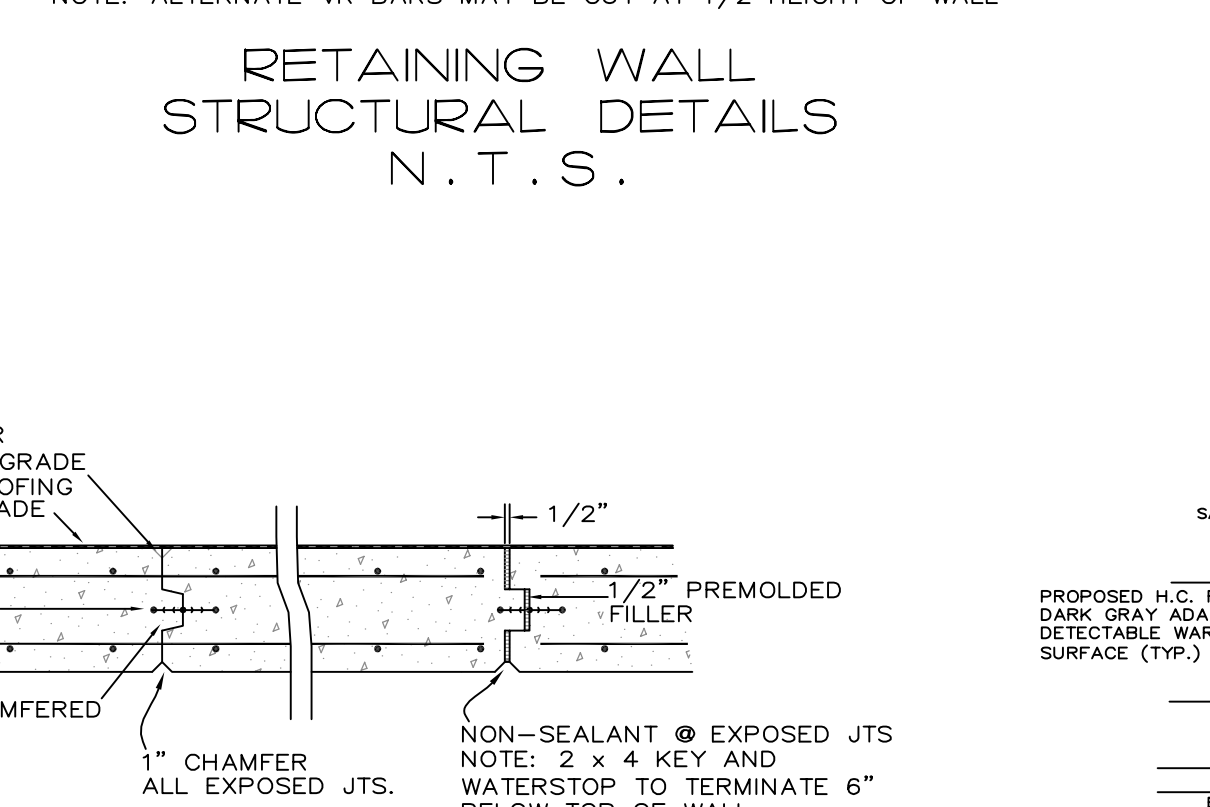
FOR VARIOUS WALL HEIGHTS
RETAINING WALL DIMENSIONS

WALL FACE HEIGHT (FT)	HEIGHT OF TOP OF BASE (FT)	TOP WIDTH (FT)	BACK BASE LENGTH (FT)	FRONT BASE LENGTH (FT)	BASE LENGTH (FT)
12.0	14.0	1.0	4.0	3.0	8.0
8.0	10.5	1.0	3.0	2.0	6.0
4.0	7.0	1.0	2.5	1.5	5.0

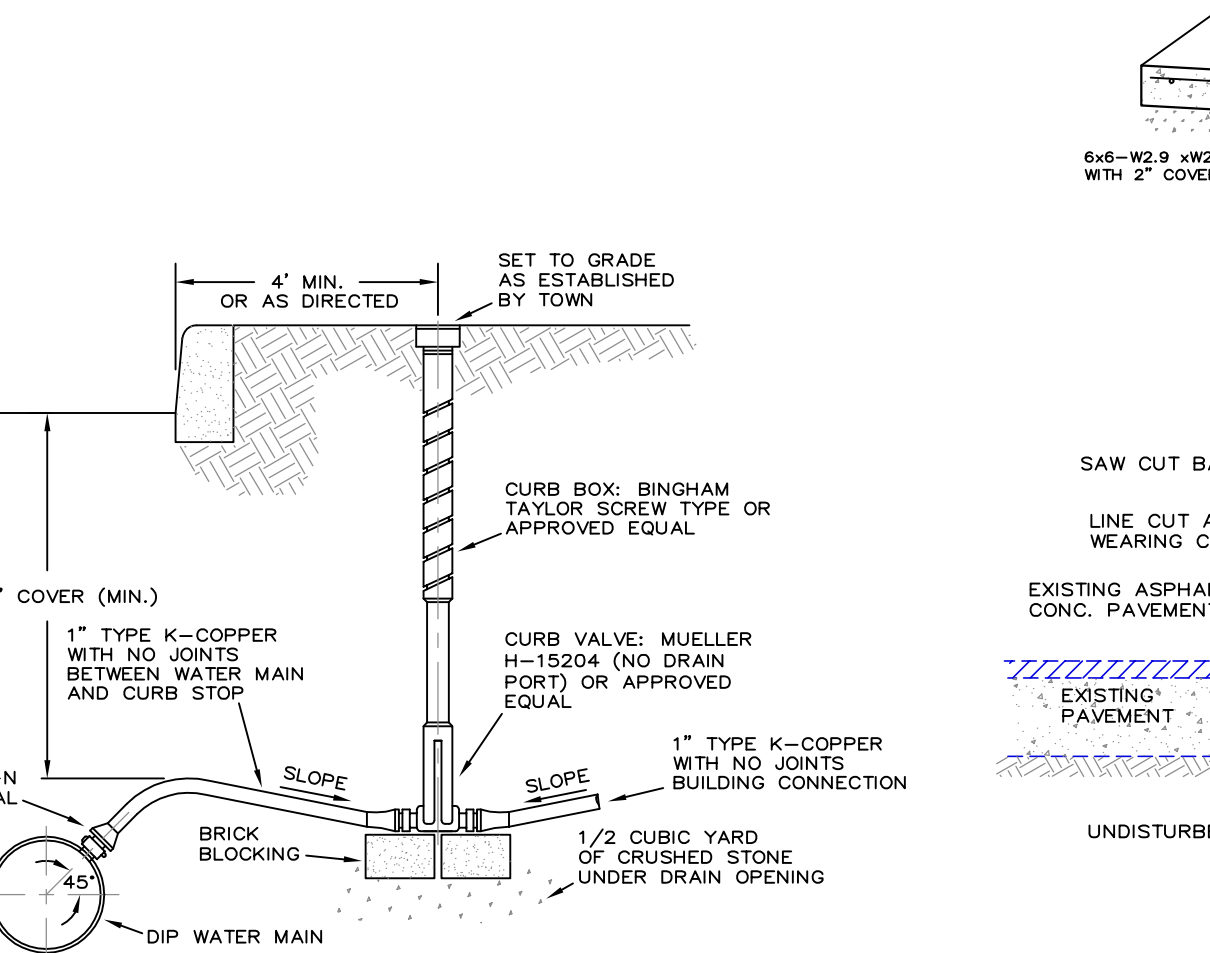
REINFORCEMENT BAR SCHEDULE
FOR VARIOUS WALL HEIGHTS

FRONT WALL HEIGHT (FT)	HF	VF	HR	VR	LATB	LTBB	LTBB	LABB
12.0'	#8-12"	#4-8"	#4-8"	#7-6"	#4-10"	#6-12"	#4-10"	#4-10"
8.0'	#6-12"	#4-10"	#4-10"	#6-8.5"	#4-14"	#6-12"	#6-12"	#4-14"
4.0'	#6-16"	#4-12"	#4-12"	#4-8.5"	#3-18"	#6-16"	#6-16"	#3-18"

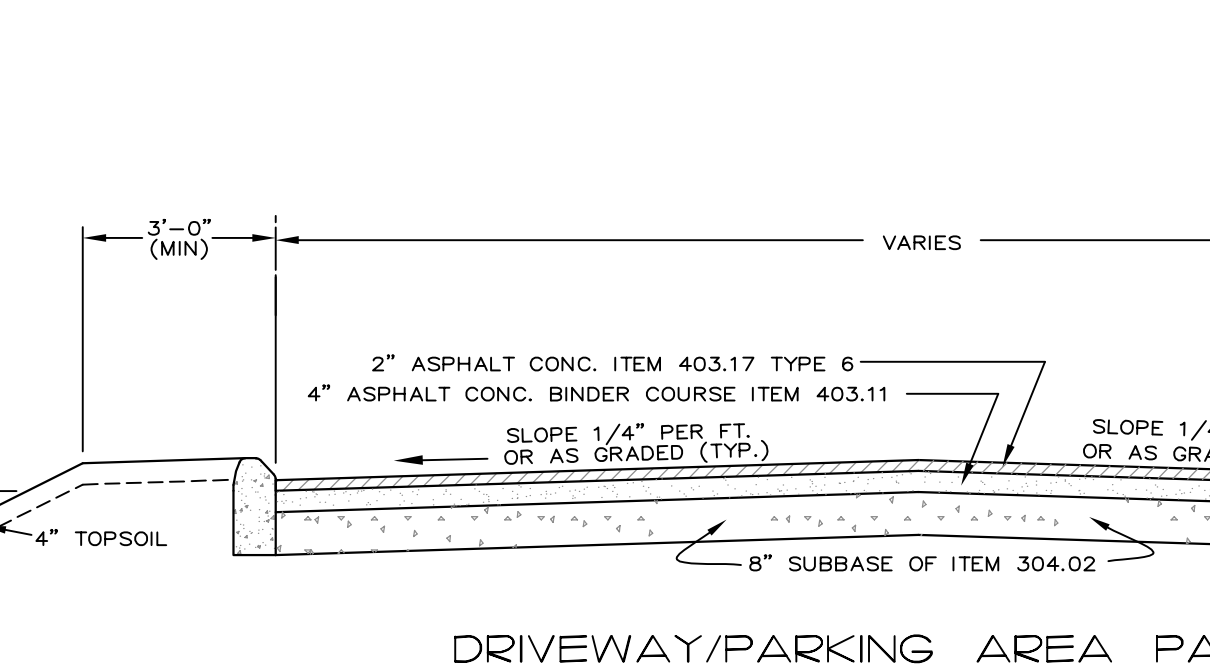
NOTE: ALTERNATE VR BARS MAY BE CUT AT 1/2 HEIGHT OF WALL



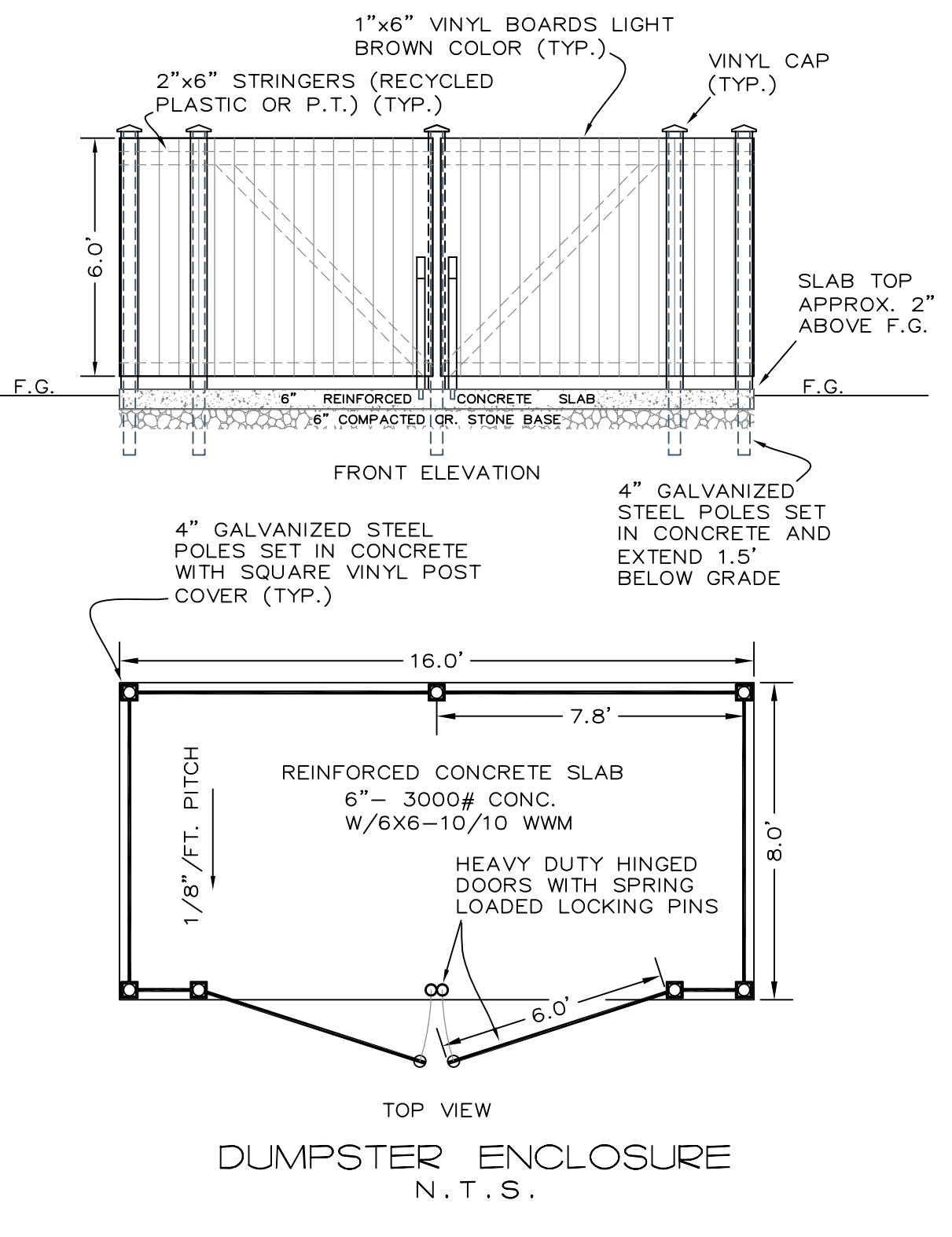
RETAINING WALL CONSTRUCTION/EXPANSION JOINT DETAILS N.T.S.



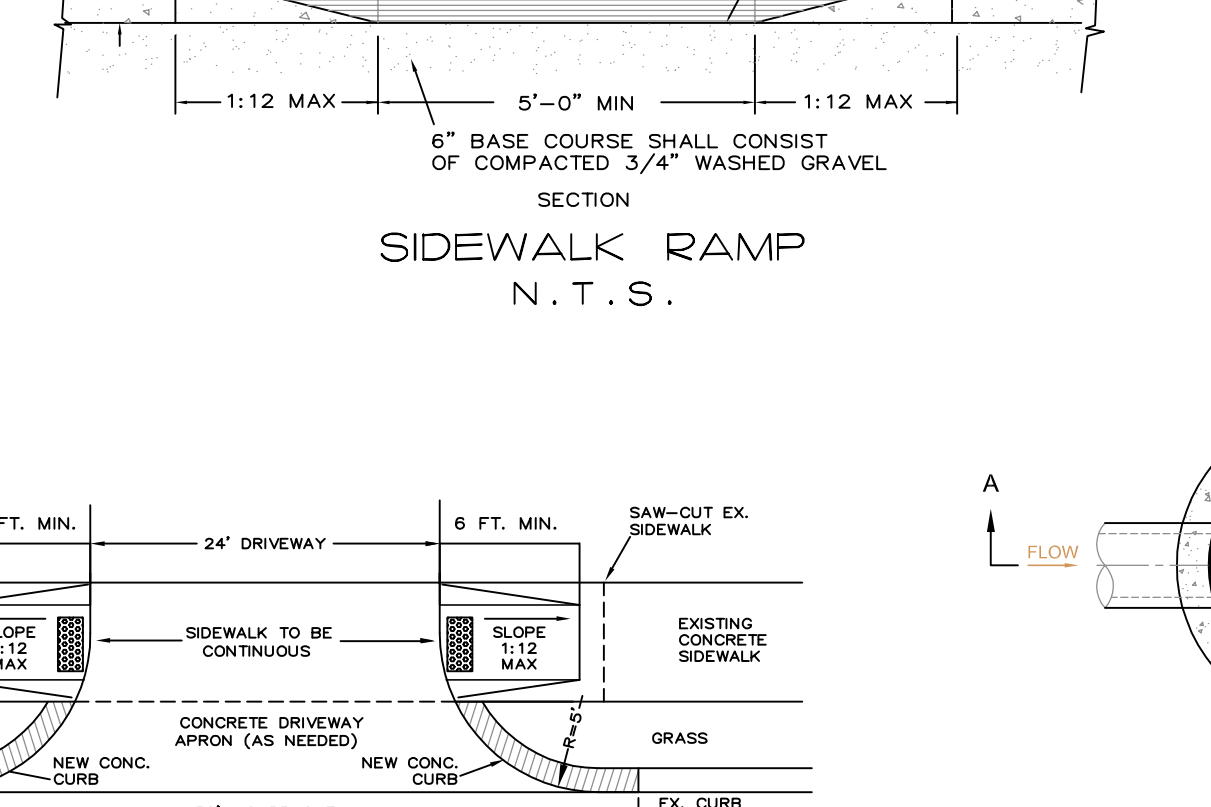
WATER SERVICE CONNECTION DETAIL N.T.S.



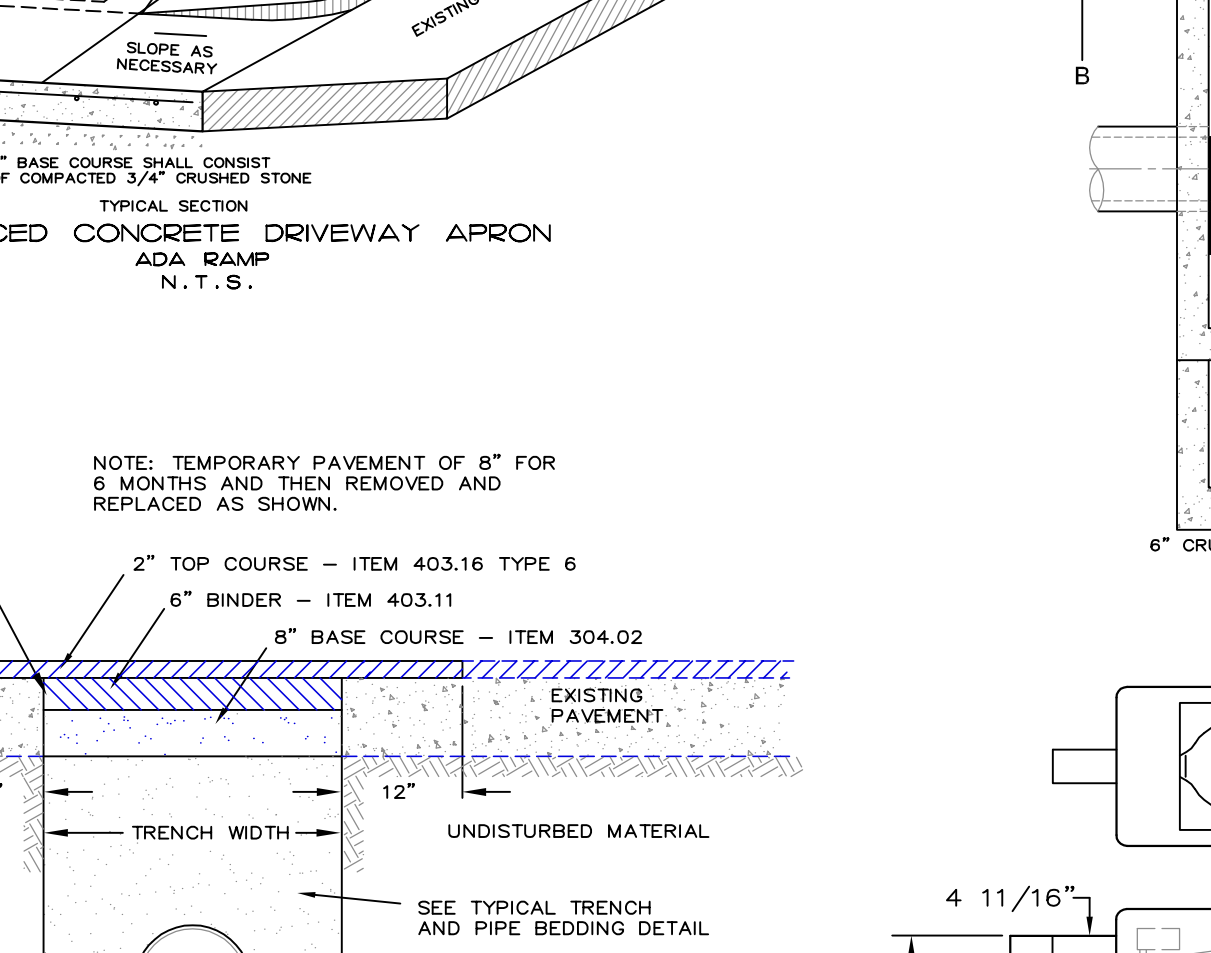
DRIVEWAY/PARKING AREA PAVEMENT N.T.S.



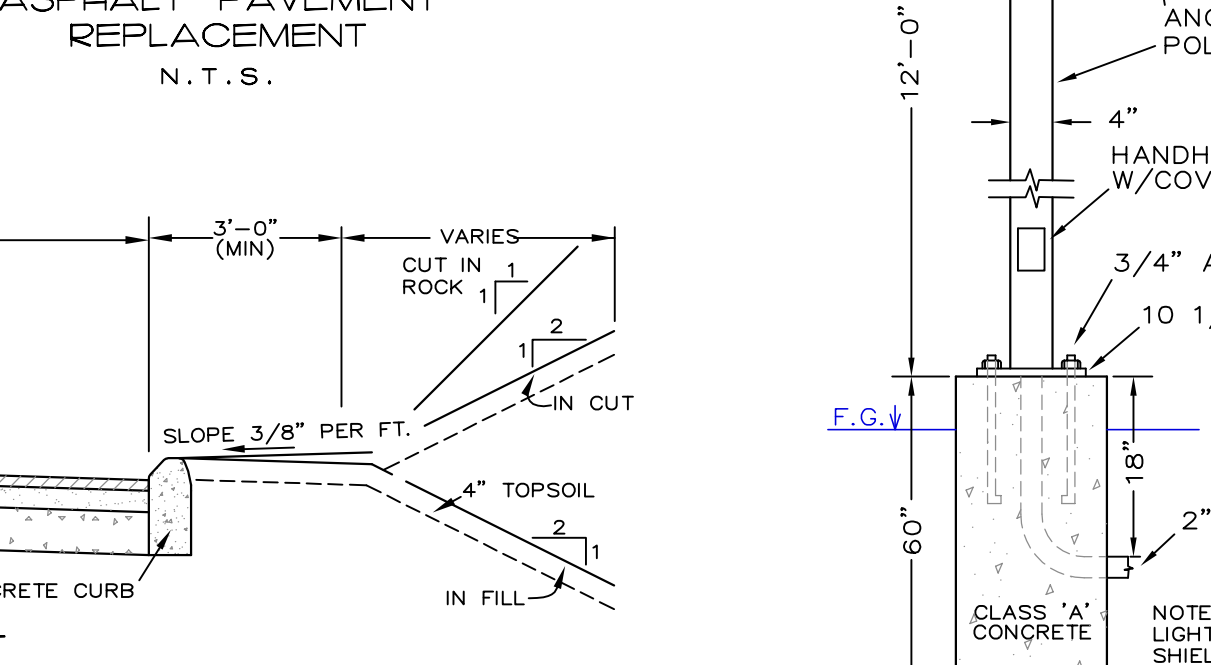
DUMPSTER ENCLOSURE N.T.S.



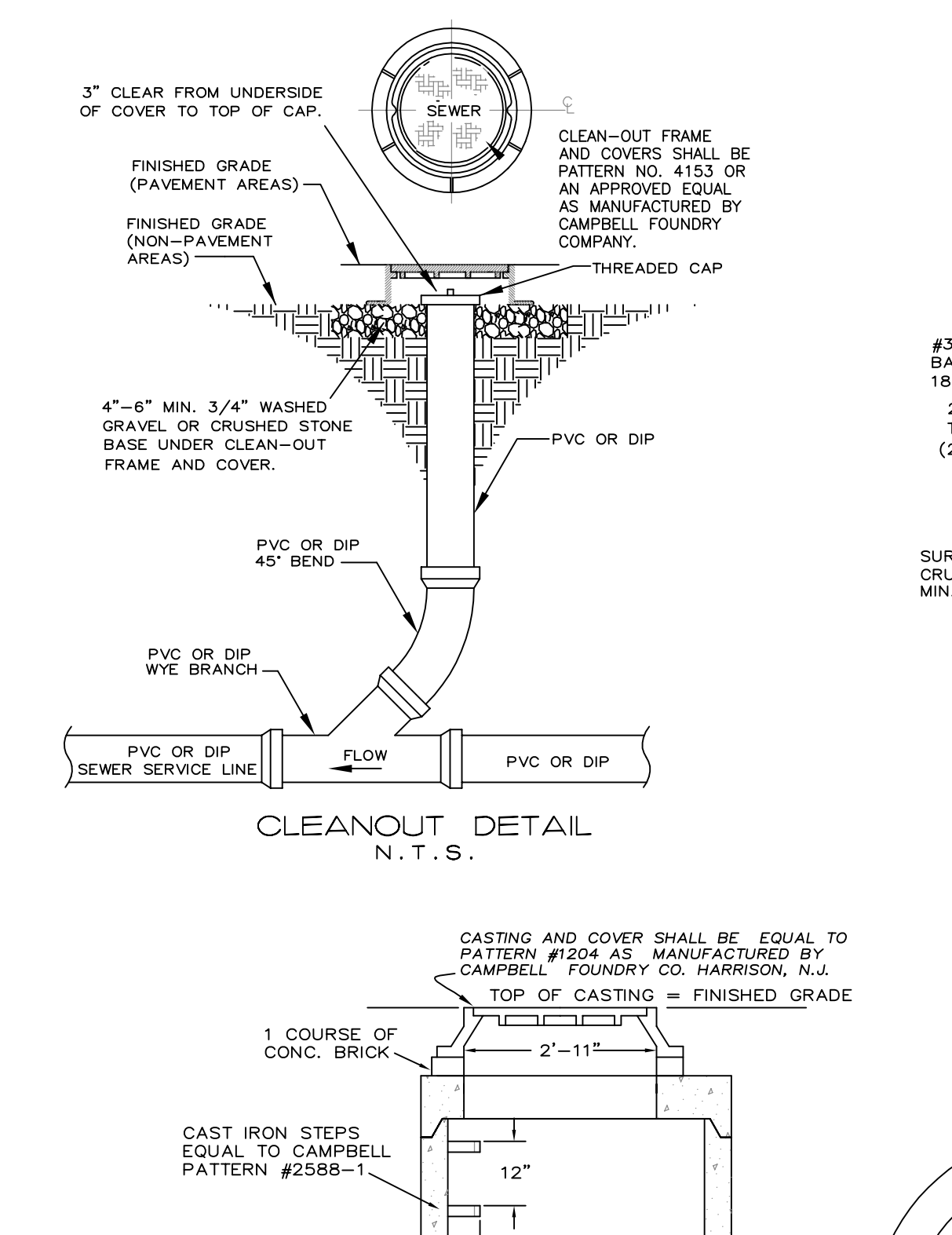
SIDEWALK RAMP N.T.S.



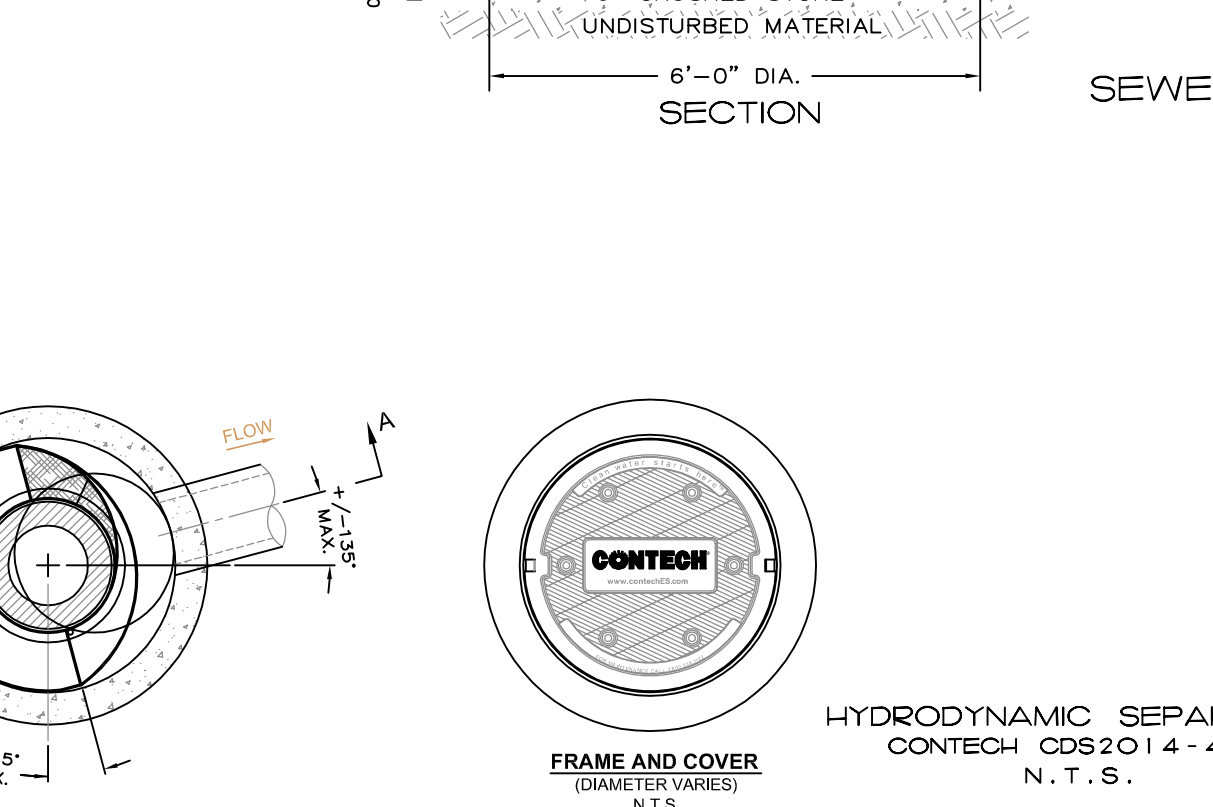
ASPHALT PAVEMENT REPLACEMENT N.T.S.



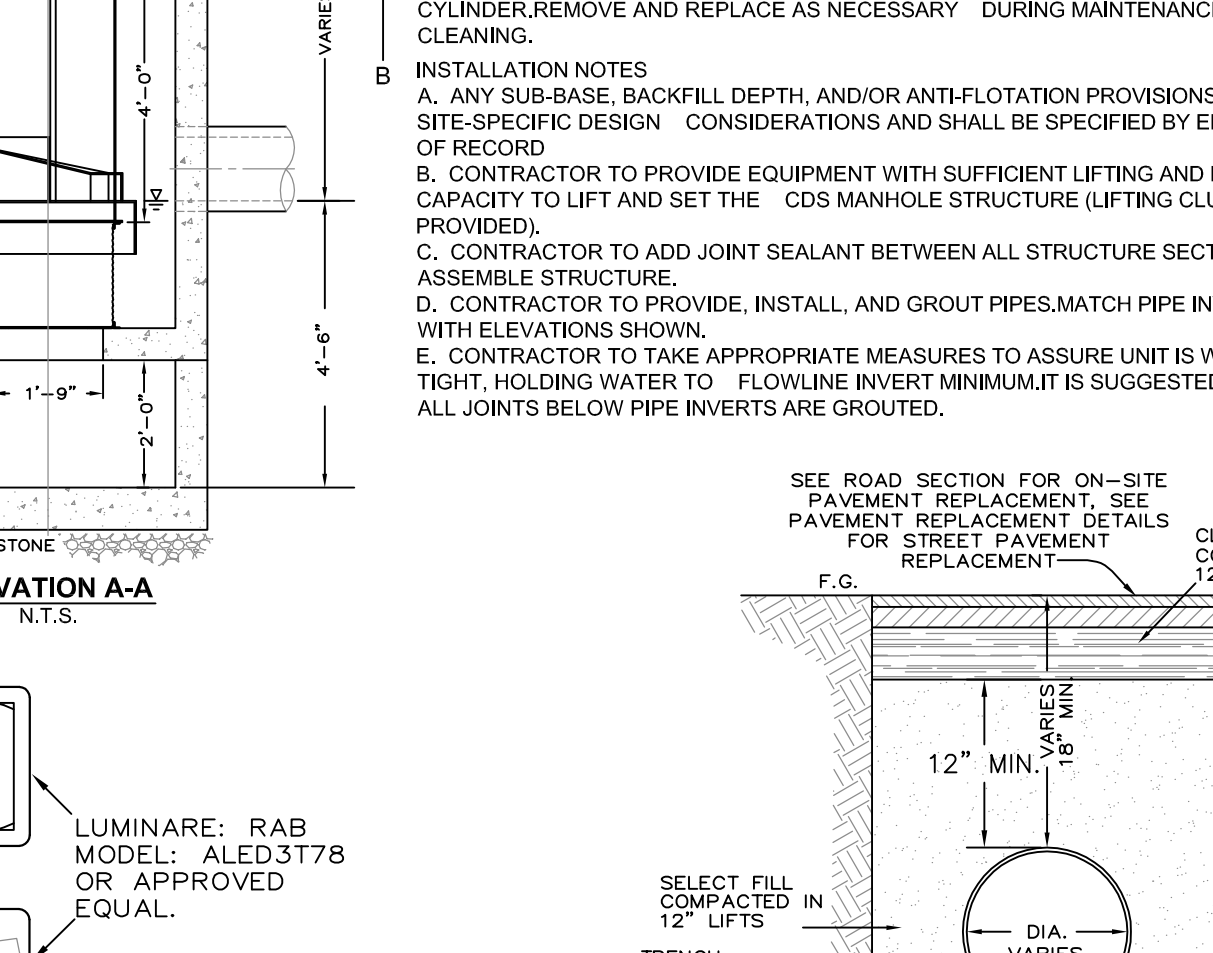
DRAIN PIPE BEDDING N.T.S.



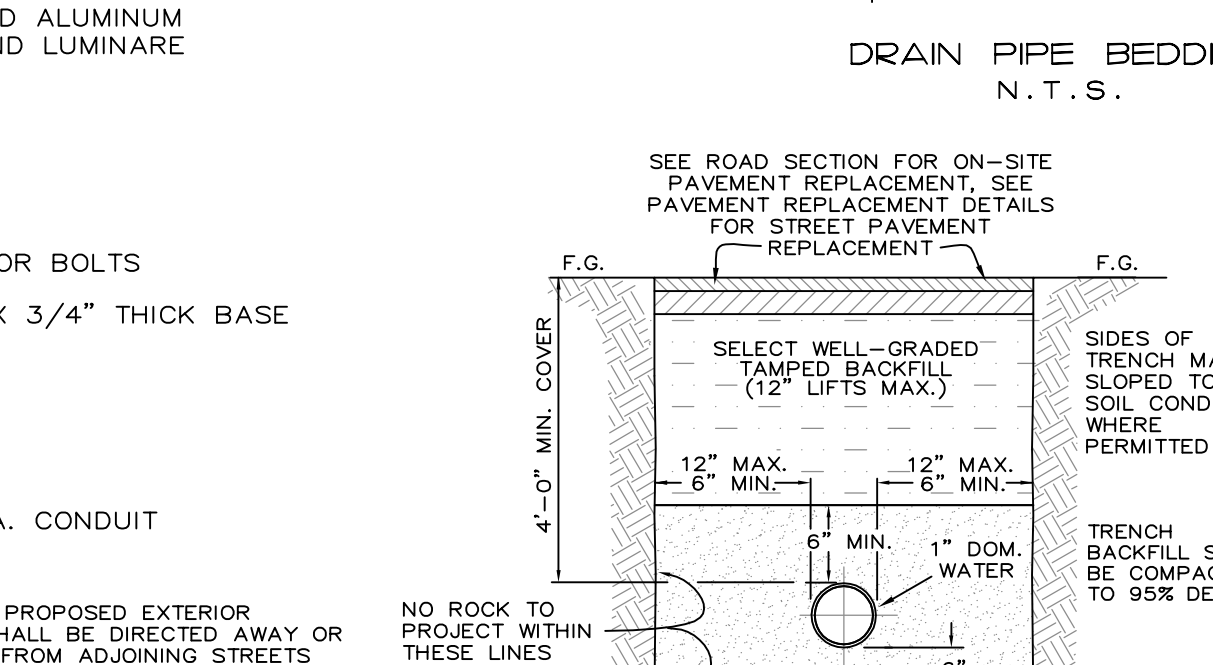
CLEANOUT DETAIL N.T.S.



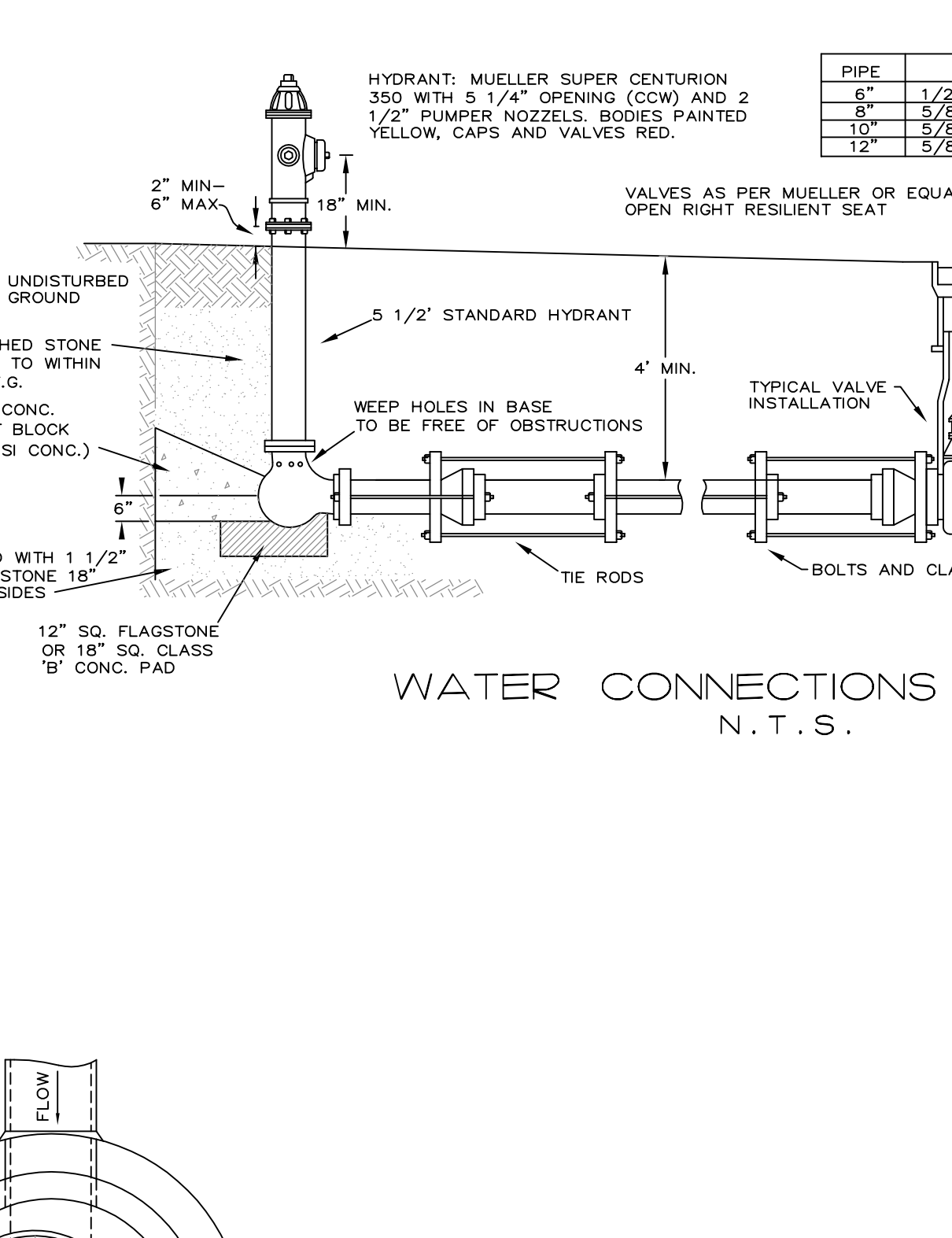
HYDRODYNAMIC SEPARATOR CONTECH CDS2014-4-C N.T.S.



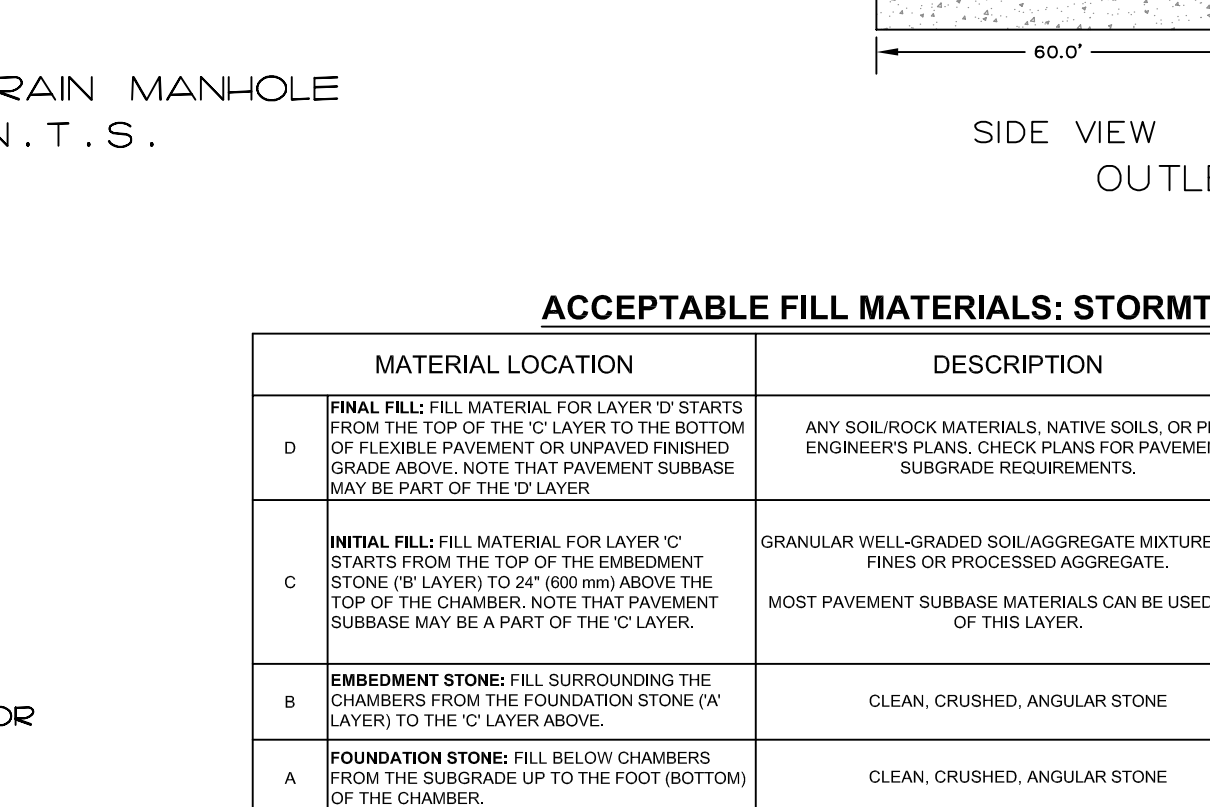
SEWER TRENCH AND PIPE BEDDING DETAIL N.T.S.



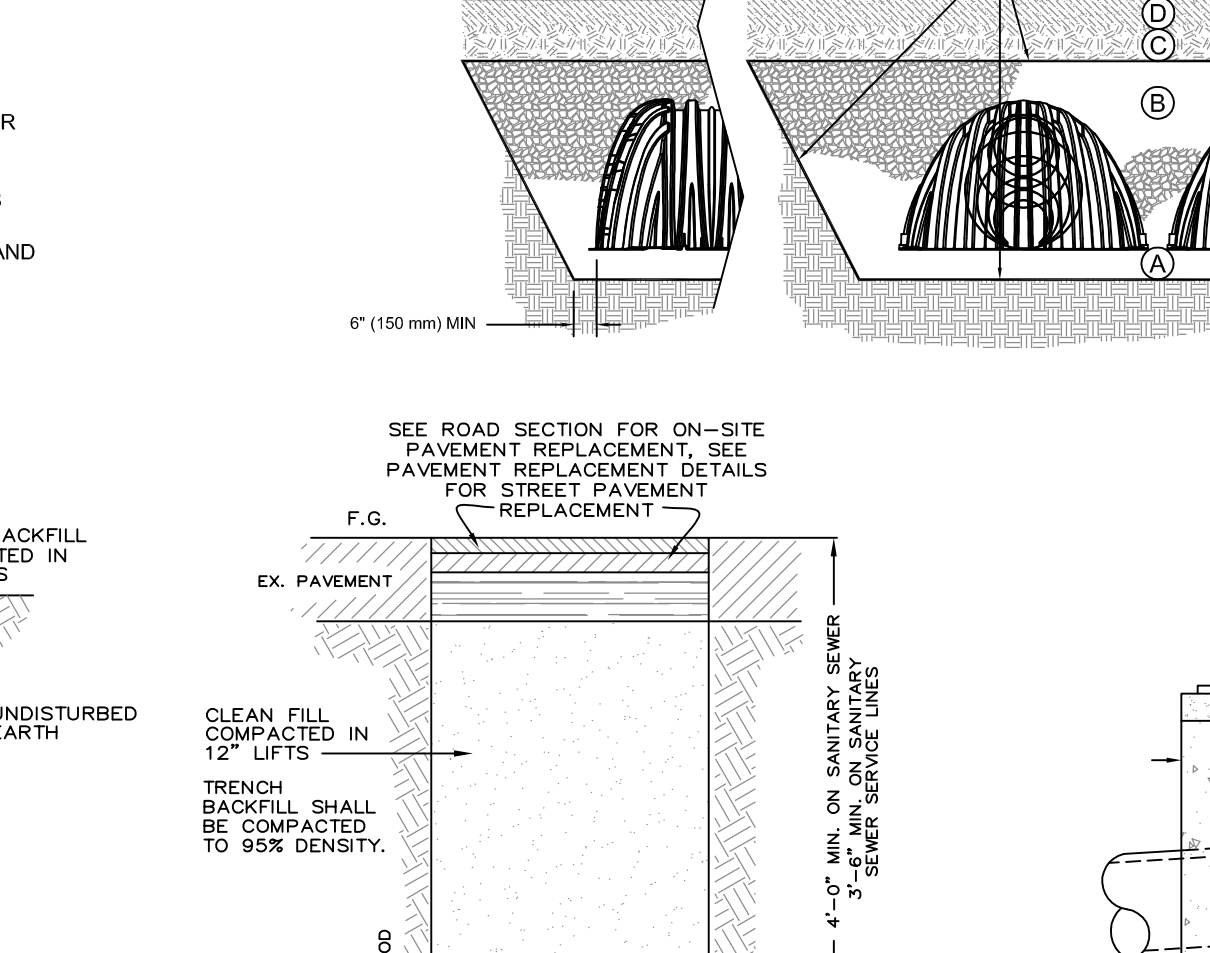
WATER SERVICE BEDDING N.T.S.



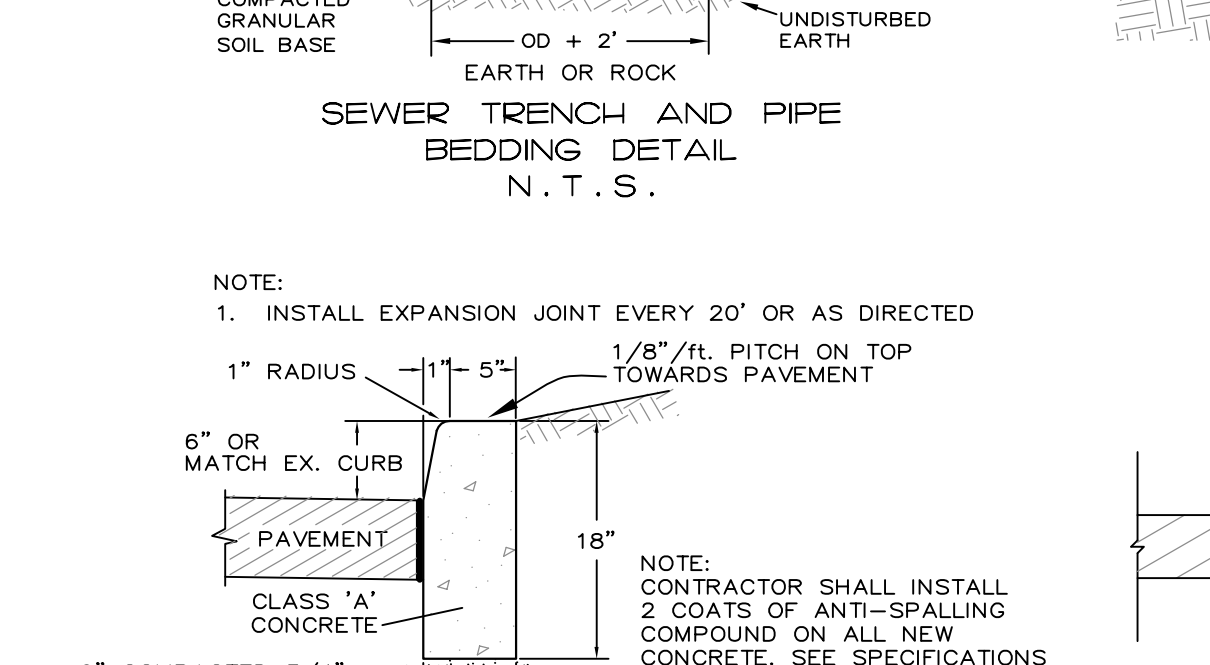
WATER CONNECTIONS SECTION N.T.S.



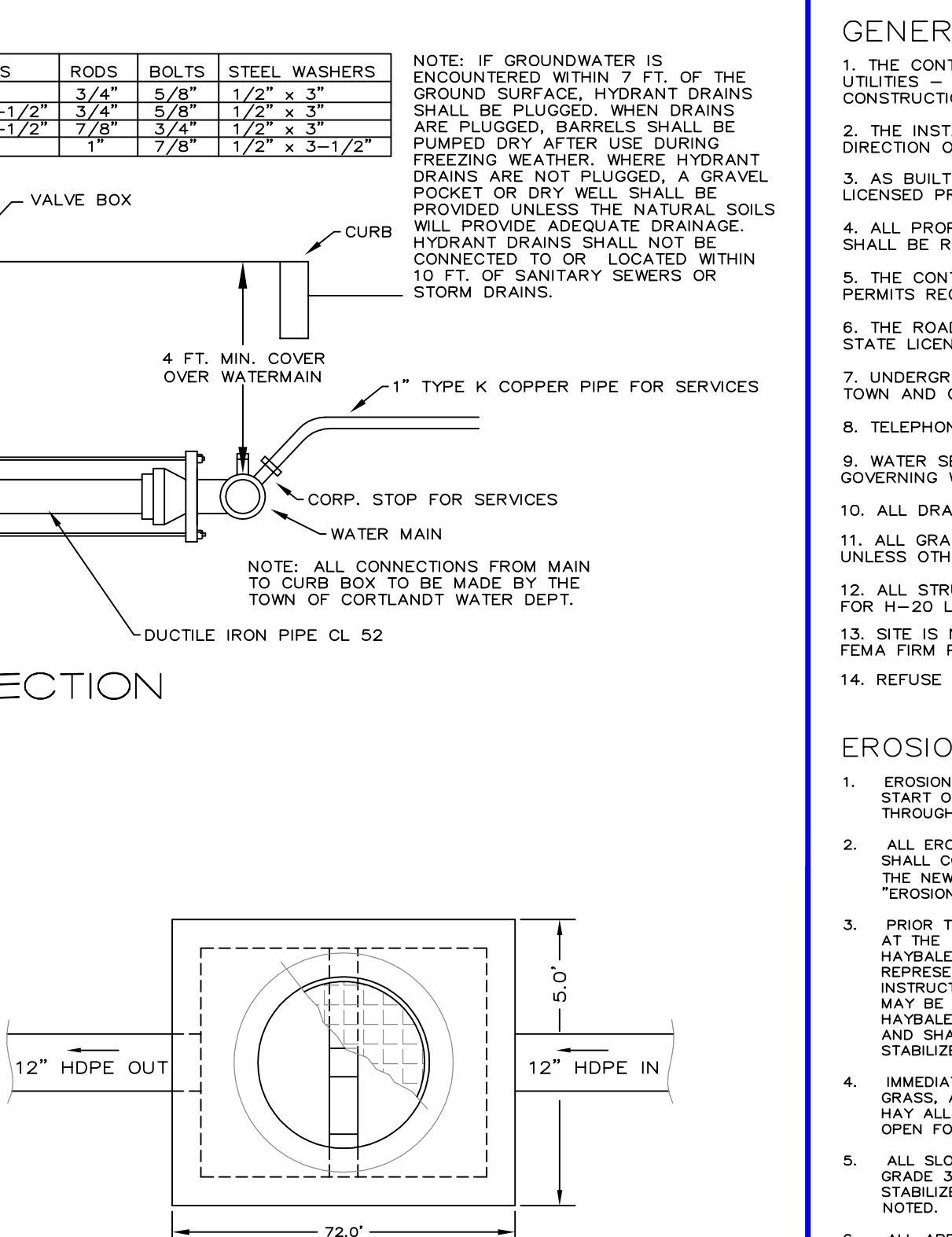
SEWER/DRAIN MANHOLE N.T.S.



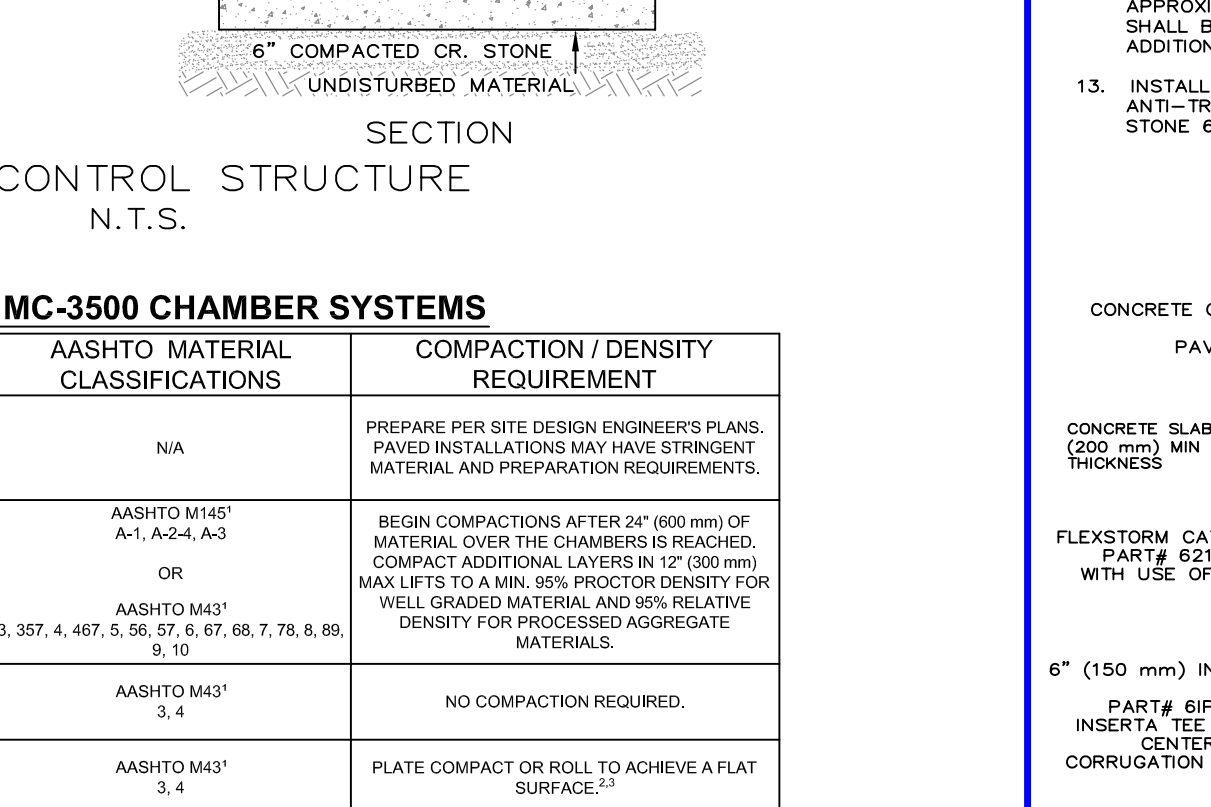
CATCH BASIN/DRAIN INLET N.T.S.



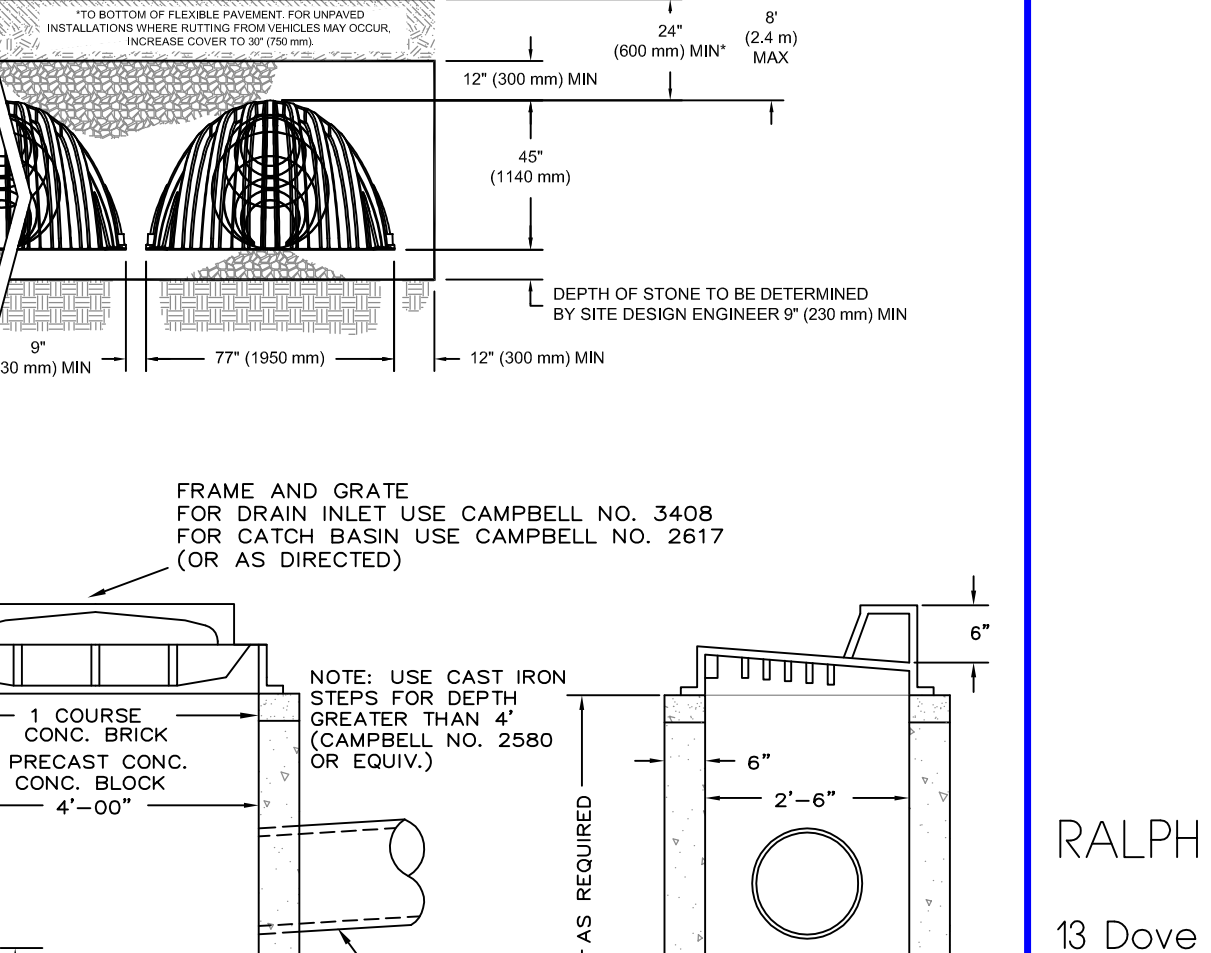
CONCRETE CURB N.T.S.



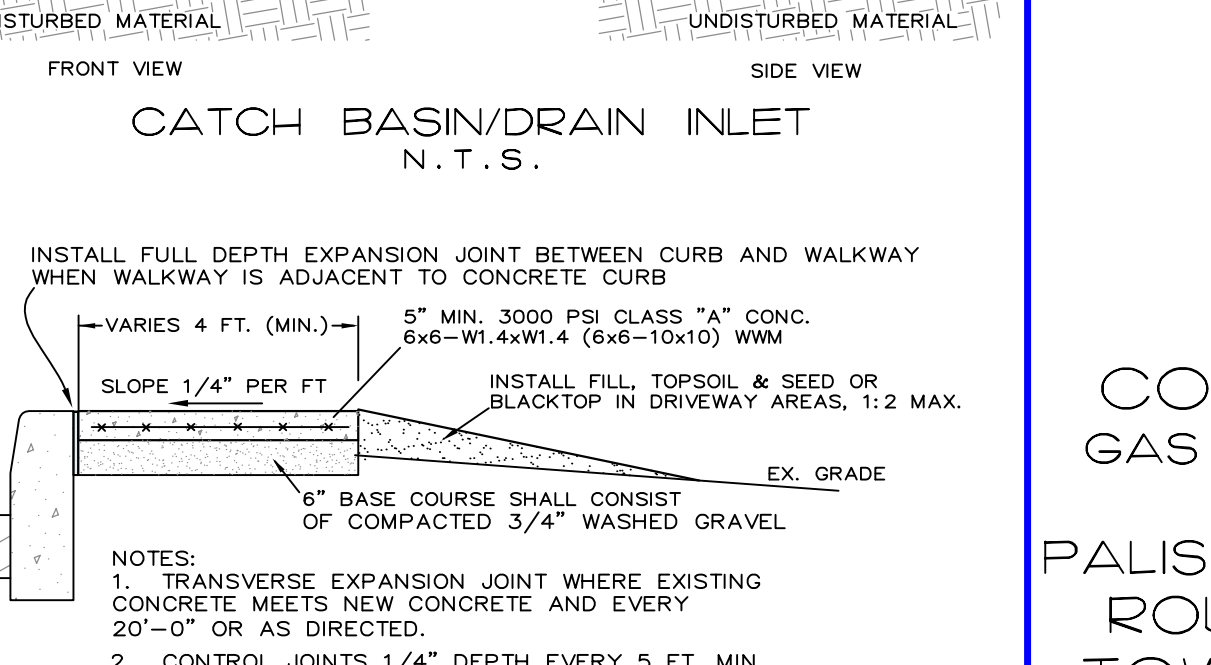
OUTLET CONTROL STRUCTURE N.T.S.



WATER SERVICE BEDDING N.T.S.



CONCRETE SIDEWALK N.T.S.

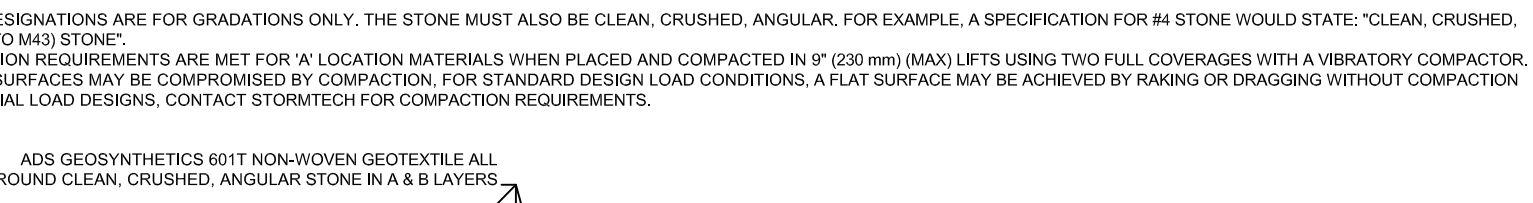


CONCRETE CURB N.T.S.

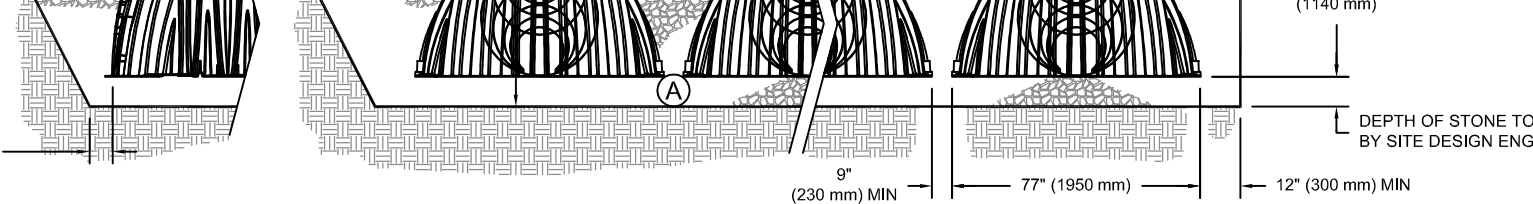
ACCEPTABLE FILL MATERIALS: STORMTECH MC-3500 CHAMBER SYSTEMS

MATERIAL LOCATION	DESCRIPTION	COMPACTION / DENSITY REQUIREMENT	
D	FILL FILL MATERIAL FOR LAYER 'D' STARTS FROM THE TOP OF THE 'C' LAYER TO THE BOTTOM OF FLEEBE PAVEMENT OR UNPAVED FINISHED GRADE. NOTE THAT FILLING SUBBASE MAY BE PART OF THIS LAYER.	ANY SOIL/ROCK MATERIALS, NATIVE SOILS, OR PER ENGINEER'S PLAN. CHECK PLANS FOR FILLING SUBBASE REQUIREMENTS.	PREPARE PER SITE DESIGN ENGINEERS PLANS. PAVED INSTALLATIONS MAY HAVE STRINGENT MATERIAL AND PREPARATION REQUIREMENTS.
C	INITIAL FILL FILL MATERIAL FOR LAYER 'C' STARTS FROM THE TOP OF THE EMBEDED STONE TO LAYER 'D' TO 4" ABOVE THE TOP OF THE CHAMBER. NOTE THAT FILLING SUBBASE MAY BE PART OF THIS LAYER.	GRANULAR WELL-GRADED SOLIDAGGREGATE MIXTURES - 55% FINES OR PROCESSED AGGREGATE. OR AASHTO M 47 OR AASHTO M 43 OR AASHTO M 41 3.307, 4.487, 5.92, 9.2, 16.7, 7.9, 8, 9, 10	BEGIN COMPACTIONS AFTER 2" (50 mm) DEPTH COMPACTED OVER THE CHAMBER. REQUIRED COMPACT ADDITIONAL LAYERS IN 2" (50 mm) MAX LIFTS TO MIN. PER PROCTOR DENSITY FOR FILLING MATERIAL AND 90% RELATIVE DENSITY FOR PROCESSED AGGREGATE MATERIALS.
B	EMBEDDED STONE FILL SURROUNDING THE CHAMBERS FROM THE FOUNDATION STONE (A) LAYERS TO THE 'C' LAYER ABOVE.	CLEAN, CRUSHED, ANGULAR STONE AASHTO M 43 3.4	NO COMPACTION REQUIRED.
A	FOUNDATION STONE: FILL BELOW CHAMBERS FROM THE SURFACE UP TO THE FOOT (BOTTOM) OF THE CHAMBER.	CLEAN, CRUSHED, ANGULAR STONE AASHTO M 43 3.4	PLATE COMPACT OR ROLL TO ACHIEVE A FLAT SURFACE.

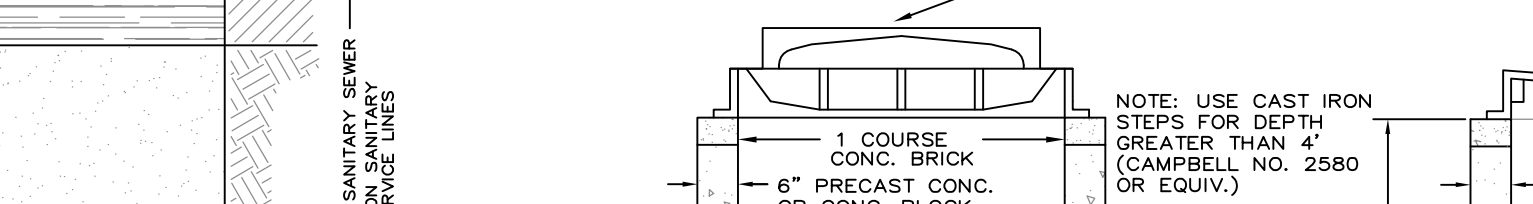
RELEASE NOTES:
1. THE LISTED AASHTO DESIGNATIONS ARE FOR GRADATIONS ONLY. THE STONE MUST ALSO BE CLEAN, CRUSHED, ANGULAR. FOR EXAMPLE, A SPECIFICATION FOR A STONE WOULD STATE: "CLEAN, CRUSHED, ANGULAR NO. 4 (AASHTO M 43) STONE."
2. GEOTECHNICAL REQUIREMENTS ARE MET FOR A LOCATION MATERIAL'S WHEN PLACED AND COMPACTED IN 2" (50 mm) MAX LIFTS USING TWO FULL COVERAGES WITH A VIBRATORY COMPACTOR. EQUIPMENT FOR SPECIAL LOAD DESIGN, CONTACT STORMTECH FOR COMPACTION REQUIREMENTS.



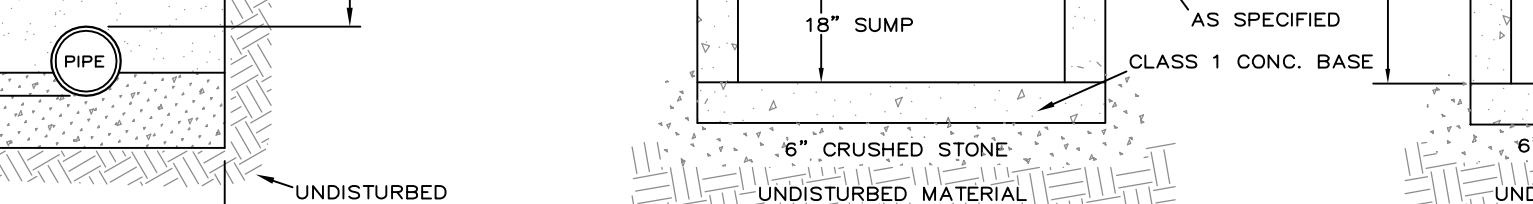
PLAN VIEW B-B N.T.S.



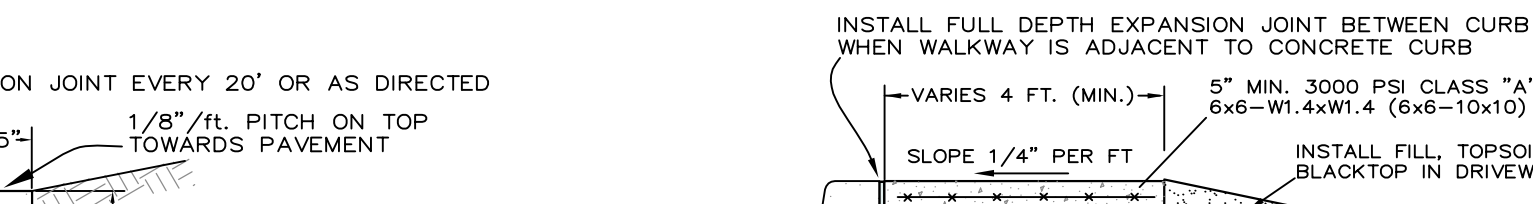
CROSS SECTION N.T.S.



SEWER TRENCH AND PIPE BEDDING DETAIL N.T.S.



CATCH BASIN/DRAIN INLET N.T.S.



WATER SERVICE BEDDING N.T.S.

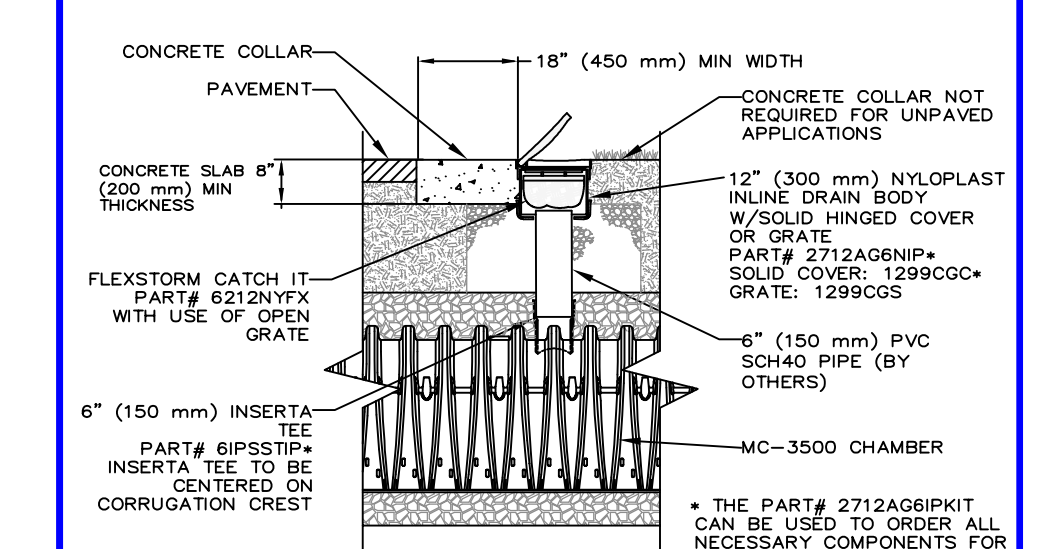


CONCRETE SIDEWALK N.T.S.

- GENERAL NOTES:
1. THE CONTRACTOR SHALL LOCATE AND VERIFY IN THE FIELD ALL UTILITIES - GAS, WATER, ELECTRICAL, BEFORE THE START OF CONSTRUCTION. CONTRACTOR SHALL CALL CODE 753 (FORMERLY CODE 53).
 2. THE INSTALLATION OF WATER AND SEWER SHALL BE UNDER THE DIRECTION OF A N.Y. STATE LICENSED PROFESSIONAL ENGINEER.
 3. AS BUILT PLANS SHALL BE REQUIRED AND CERTIFIED BY A N.Y. STATE LICENSED PROFESSIONAL ENGINEER OR SURVEYOR.
 4. ALL PROPERTY DISTURBED IN THE R.O.W. OR ON PRIVATE LANDS, SHALL BE RESTORED TO NEW CONDITIONS.
 5. THE CONTRACTOR SHALL BE RESPONSIBLE FOR ALL APPLICATIONS AND PERMITS REQUIRED FOR CONSTRUCTION.
 6. THE ROAD AND UTILITIES SHALL BE STAKED IN THE FIELD BY A N.Y. STATE LICENSED SURVEYOR OR ENGINEER.
 7. UNDERGROUND GAS AND ELECTRIC SHALL BE AS REQUIRED BY THE TOWN AND CON. LOCAL.
 8. TELEPHONE AND CABLE LINES TO BE UNDERGROUND.
 9. WATER SERVICE CONNECTION SHALL BE AS REQUIRED BY THE GOVERNING WATER DEPARTMENT.
 10. ALL DRAINAGE PIPE TO BE HOPE UNLESS OTHERWISE NOTED.
 11. ALL GRADED SLOPES SHALL NOT EXCEED 1 VERTICAL ON 2 HORIZONTAL UNLESS OTHERWISE APPROVED BY THE TOWN ENGINEER.
 12. ALL STRUCTURES TO BE PLACED IN PAVED AREAS SHALL BE DESIGNED FOR H-20 LOADING.
 13. SIGNS NOT LOCATED IN A FEMA FLOOD ZONE AS SHIPPED ON THE FEMA FIRM PANEL.
 14. REFUSE TO BE PRIVATELY CARTED.

EROSION AND SEDIMENT CONTROL NOTES

1. EROSION CONTROL MEASURES SHALL BE INSTALLED PRIOR TO THE START OF CONSTRUCTION AND MAINTAINED IN EFFECTIVE CONDITION THROUGHOUT THE CONSTRUCTION PERIOD.
2. ALL EROSION AND SEDIMENTATION CONTROL MEASURES AND PROCEDURES SHALL COMPLY WITH THE STANDARDS AND SPECIFICATIONS OF THE NEW YORK STATE DEPARTMENT OF ENVIRONMENTAL CONSERVATION EROSION AND SEDIMENT CONTROL GUIDELINES FOR NEW DEVELOPMENT.
3. PRIOR TO ANY EXCAVATION, HAY BALES/SILT FENCE SHALL BE INSTALLED AT APPROPRIATE LOCATIONS NOTED ON EROSION CONTROL PLAN. HAYBALES/SILT FENCING SHALL BE INSTALLED AS DIRECTED BY THE OWNER'S REPRESENTATIVE IN THE FIELD AND INSTALLED AS PER THE INSTRUCTIONS OF THE MANUFACTURER. ADDITIONAL HAYBALES/SILT FENCE MAY BE PLACED BY THE OWNER'S REPRESENTATIVE IN THE FIELD. HAYBALES/SILT FENCING SHALL BE MAINTAINED IN OPERABLE CONDITION AND SHALL NOT BE REMOVED UNTIL DISTURBED AREAS ARE THOROUGHLY STABILIZED.
4. ALL EROSION AND SEDIMENTATION CONTROL MEASURES AND PROCEDURES SHALL COMPLY WITH THE STANDARDS AND SPECIFICATIONS OF THE NEW YORK STATE DEPARTMENT OF ENVIRONMENTAL CONSERVATION EROSION AND SEDIMENT CONTROL GUIDELINES FOR NEW DEVELOPMENT.
5. PRIOR TO ANY EXCAVATION, HAY BALES/SILT FENCE SHALL BE INSTALLED AT APPROPRIATE LOCATIONS NOTED ON EROSION CONTROL PLAN. HAYBALES/SILT FENCING SHALL BE INSTALLED AS DIRECTED BY THE OWNER'S REPRESENTATIVE IN THE FIELD AND INSTALLED AS PER THE INSTRUCTIONS OF THE MANUFACTURER. ADDITIONAL HAYBALES/SILT FENCE MAY BE PLACED BY THE OWNER'S REPRESENTATIVE IN THE FIELD. HAYBALES/SILT FENCING SHALL BE MAINTAINED IN OPERABLE CONDITION AND SHALL NOT BE REMOVED UNTIL DISTURBED AREAS ARE THOROUGHLY STABILIZED.
6. ALL AREAS OF DISTURBED SOIL SHALL BE STABILIZED, IN ADDITION TO ALL SPECIFIED EROSION CONTROL MEASURES, BY THE CONTRACTOR. THE CONTRACTOR SHALL TAKE ALL STEPS PRESENT AND NECESSARY TO STABILIZE THE SITE AT ALL TIMES.
7. DO NOT STOCKPILE MATERIALS ON STEEP SLOPES, IN DRAINAGE SWALES OR IN WETLAND AREAS. SURROUND ALL STOCKPILE AREAS WITH STAKED HAYBALES OR SILT SCREEN MATERIAL.
8. ALL CATCH BASINS ARE TO BE PROTECTED WITH APPROPRIATE FILTERS THROUGHOUT THE CONSTRUCTION PERIOD AND UNTIL ALL DISTURBED AREAS ARE THOROUGHLY STABILIZED.
9. HAYBALES SHALL BE USED AT THE TOPS AND TOE OF SLOPES, AS NECESSARY, TO COLLECT AND DIVERT FLOWING. SCREENS SHALL BE USED IN AREAS OF UNCONCENTRATED FLOWS TO COLLECT HAYBALES AND SILT SCREEN OR PLANS MAY BE ADJUSTED IN THE FIELD.
10. UTILITY LINE EXCAVATED MATERIAL SHALL BE TEMPORARILY STOCKPILED OR HIGH SIDE OF EXCAVATION TO RHOPIF IS DIRECTED AWAY FROM TRENCH. AFTER BACK-FILLING, AREA IS TO BE TOPSOILED, SEEDED AND MULCHED OR PAVED.
11. ALL EROSION AND SEDIMENT CONTROL MEASURES SHALL BE INSPECTED IMMEDIATELY AFTER EACH RAINFALL AND AT LEAST DAILY DURING PROLONGED RAINFALL. ANY REQUIRED REPAIRS SHALL BE MADE IMMEDIATELY.
12. SEDIMENT DEPOSITS SHALL BE REMOVED WHEN THEY REACH APPROXIMATELY ONE-HALF THE HEIGHT OF THE BARRIER. SEDIMENT SHALL BE DISPOSED OF IN A MANNER THAT DOES NOT RESULT IN ADDITIONAL EROSION OR POLLUTION.
13. INSTALL GRAVEL BED AT CONSTRUCTION ENTRANCE TO SERVE AS ANTI-TRACKING PAD. GRAVEL BED TO BE 2" DIAMETER CRUSHED STONE 6" DEEP.



MC-3500 6" INSPECTION PORT DETAIL N.T.S.

RALPH G. MASTROMONACO, P.E., P.C.
Consulting Engineers
13 Dove Court, Croton-on-Hudson, New York 10520
(914) 271-4762 (914) 271-2820 Fax

DETAILS/NOTES
PROPOSED
CONVENIENCE STORE
GAS STATION REHABILITATION
PREPARED FOR
PALISADES ENTERPRISES, LLC
ROUTE 6 - E. MAIN ST.
TOWN OF CORTLANDT
WESTCHESTER COUNTY, NY
APRIL 22, 2020
SHEET 8 OF 8 SHEETS

Unauthorized alterations or additions to this drawing is a violation of Section 7209 (2) of the New York State Education Law.