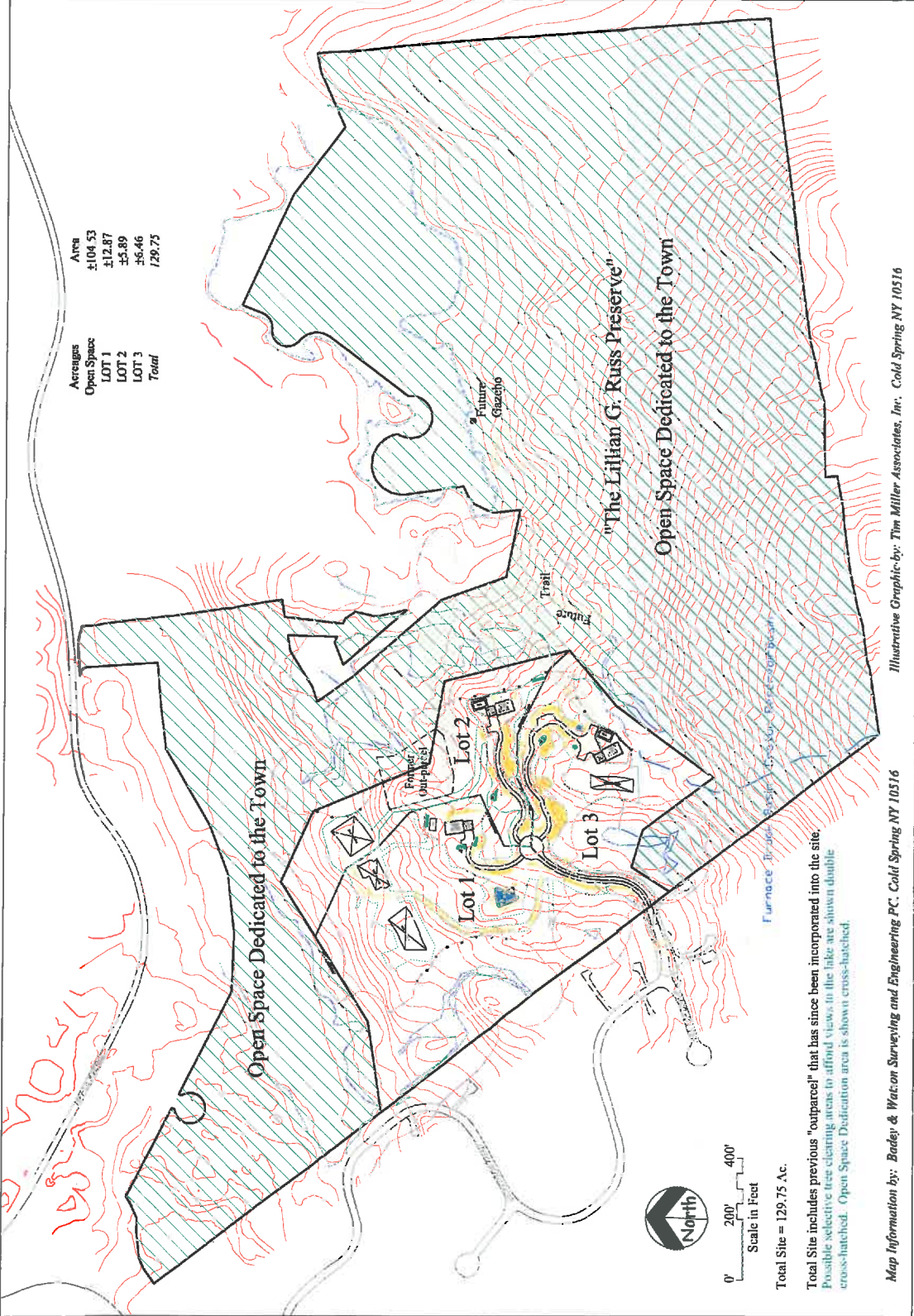


Right to Know/FOIL

Information contained herein is compiled and made available for informational purposes only. While every effort has been made to provide correct and timely information neither the Town nor its employees or agents assume any legal liability or responsibility for the accuracy, scope or timeliness of its content. The Town reserves the right to alter or remove any material or information posted or contained on this website without notice. The DRAFT Resolutions and documentation herein are for the convenience of the Board and should not be construed as an indication as to how the Board will vote. The Resolutions are only proposed and do not become final until approved by a majority of the Board.



Total Site includes previous "outparcel" that has since been incorporated into the site.
 Possible selective tree clearing areas to afford views in the lake are shown double cross-hatched. Open Space Dedication area is shown cross-hatched.

Map Information by: *Badey & Watson Surveying and Engineering P.C.* Cold Spring NY 10516
 Illustrative Graphic by: *Tim Miller Associates, Inc.* Cold Spring NY 10516

Abee Rose Subdivision - Illustrative Plan

03/27/18